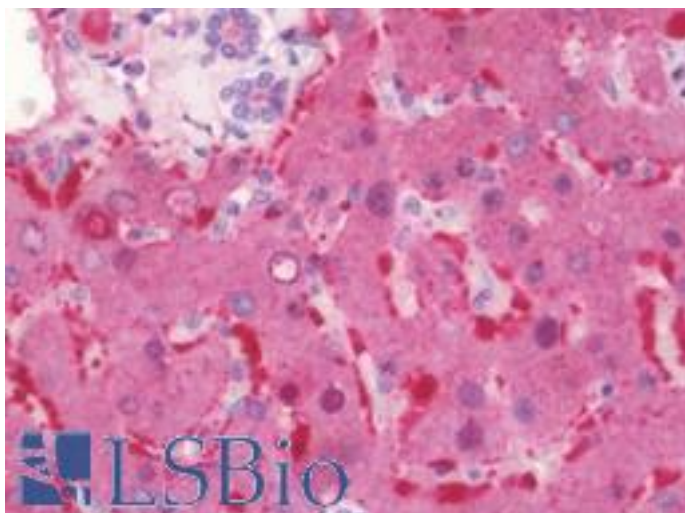


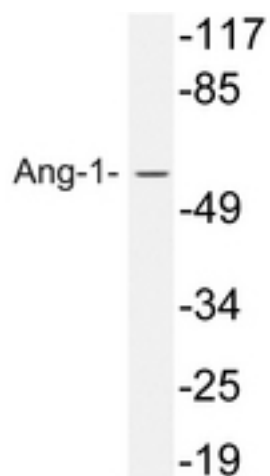
Angiogenin / ANG Rabbit anti-Human Polyclonal (aa176-224) Antibody - LS-B10907 - LSBio	
<b>CatalogID:</b>	LS-B10907
<b>Validation:</b>	This antibody replaces catalog number LS-C177215. It has been validated for use in the following assays: IHC-P.
<b>Target:</b>	angiogenin, ribonuclease, RNase A family, 5
<b>Synonyms:</b>	ANG Antibody, Angiogenin Antibody, HEL168 Antibody, ALS9 Antibody, Ribonuclease 5 Antibody, RNASE5 Antibody, Epididymis luminal protein 168 Antibody, RNase 5 Antibody
<b>Host</b>	ANG antibody was produced in Rabbit
<b>Clonality:</b>	Polyclonal
<b>Immunogen Species:</b>	Angiogenin / ANG antibody was raised against Human
<b>Antigen Type:</b>	Synthetic peptide
<b>Immunogen:</b>	Angiogenin / ANG antibody was raised against synthetic peptide around Glu207 of human Angiogenin / ANG
<b>Specificity:</b>	Human Angiogenin / ANG
<b>Epitope:</b>	aa176-224
<b>Reactivity:</b>	Human, Mouse, Rat
<b>Purification:</b>	Immunoaffinity purified
<b>Presentation:</b>	PBS, pH 7.2, 0.05% sodium azide
<b>Recommended Storage:</b>	Store at 4°C short term. Aliquot and store at -20°C long term. Avoid freeze-thaw cycles.
<b>Uses:</b>	IHC - Paraffin (10 µg/ml), Western blot (1:500 - 1:1000) (Optimal dilution to be determined by the researcher)
<b>Size:</b>	50 µl
<b>Concentration:</b>	1 mg/ml

**Immunohistochemistry Image:**



Human Liver: Formalin-Fixed, Paraffin-Embedded (FFPE)

**Western Blot Image:**



Western blot of p-CD318 (Y707) pAb in extracts from HeLa cells.

**Requested From:**

Japan

Laboratory Reagent For In Vitro Research Use Only

Not for resale without prior written consent from LifeSpan BioSciences, Inc.

Created on 9/23/2014

© 2014 LifeSpan BioSciences