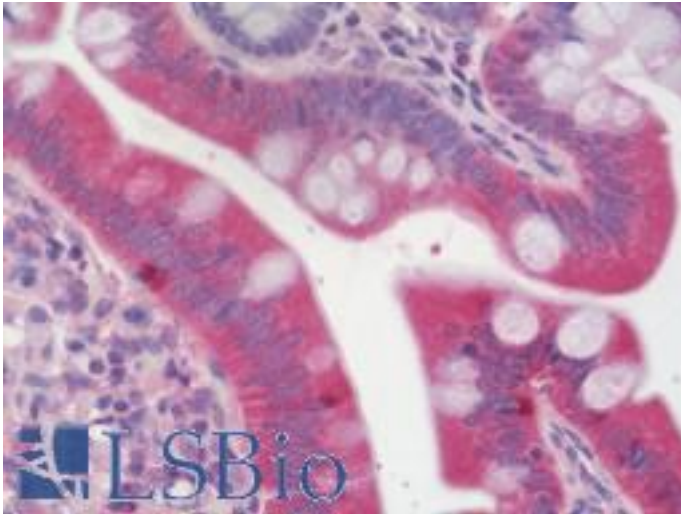


TIP30 / HTATIP2 Rabbit anti-Human Polyclonal Antibody - LS-B10900 - LSBio

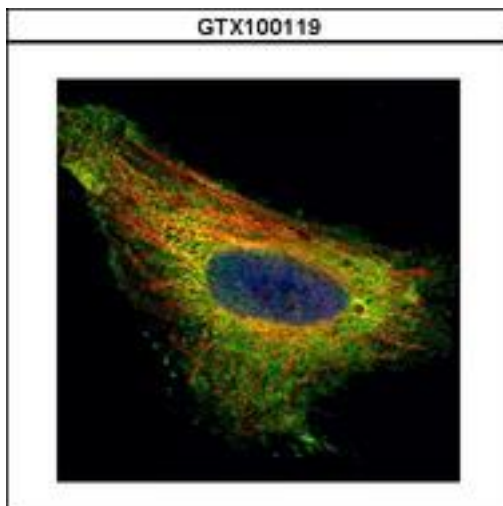
CatalogID:	LS-B10900
Validation:	This antibody replaces catalog number LS-C155172. It has been validated for use in the following assays: IHC-P.
Target:	HIV-1 Tat interactive protein 2, 30kDa (HTATIP2)
Synonyms:	HTATIP2 Antibody, CC3 Antibody, SDR44U1 Antibody, Tat-interacting protein (30kD) Antibody, TIP30 Antibody, Oxidoreductase HTATIP2 Antibody
Host	HTATIP2 antibody was produced in Rabbit
Clonality:	Polyclonal
Isotype:	IgG
Immunogen Species:	TIP30 / HTATIP2 antibody was raised against Human
Antigen Type:	Recombinant protein
Immunogen:	TIP30 / HTATIP2 antibody was raised against recombinant fragment corresponding to a region within amino acids 1 and 242 of TIP30 (SwissProt Q9BUP3).
Specificity:	Human HTATIP2 / TIP30
Reactivity:	Human
Purification:	Immunoaffinity purified
Presentation:	PBS, pH 7, 1% BSA, 20% Glycerol, 0.01% Thimerosal
Recommended Storage:	Aliquot and freeze at -20° C. Avoid freeze-thaw cycles.
Usage Summary:	Suggested starting dilutions are as follows: Western blot: 1:1000-1:10000, IHC-Paraffin: 5 µg/ml [suggested antigen retrieval using heat mediated 10 mM Citrate buffer (pH 6.0) or Tris-EDTA buffer (pH 8.0)], ICC/IF: 1:100-1:1000, IP: 1:100-1:500. Not yet tested in other applications. Optimal working dilutions should be determined experimentally by the end user.
Uses:	IHC - Paraffin (5 µg/ml), ICC (1:100 - 1:1000), Immunofluorescence (1:100 - 1:1000), Western blot (1:1000 - 1:10000), Immunoprecipitation (1:100 - 1:500) (Optimal dilution to be determined by the researcher)
Size:	50 µl
Concentration:	1 mg/ml

Immunohistochemistry Image:



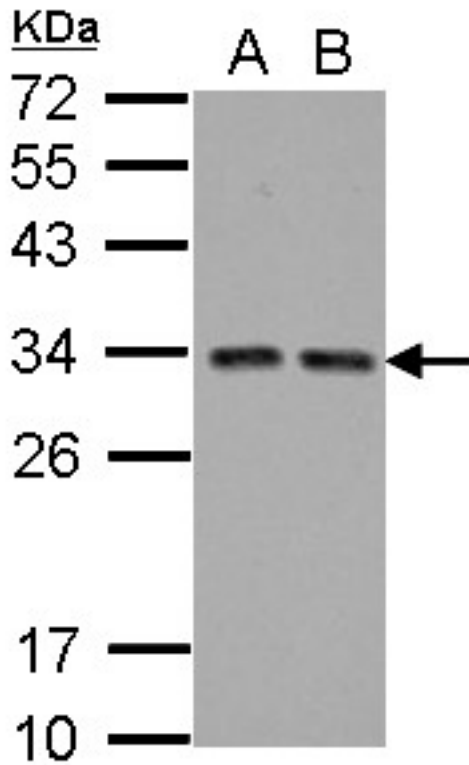
Human Small Intestine: Formalin-Fixed, Paraffin-Embedded (FFPE)

Immunofluorescence Image:



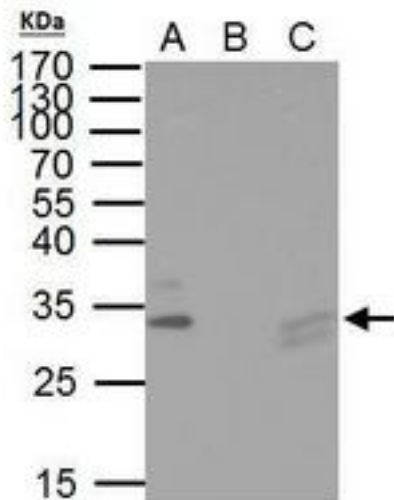
Confocal immunofluorescence analysis (Olympus FV10i) of paraformaldehyde-fixed HeLa, using TIP30 antibody (Green) at 1:500 dilution. Alpha-tubulin filaments were labeled with alpha-tubulin antibody (Red) at 1:2000.

Western Blot Image:



Sample (30 ug of whole cell lysate) A: A431 B: HeLa 12% SDS PAGE HTATIP2 / TIP30 antibody diluted at 1:5000

Immunoprecipitation Image:



IP Sample: hela whole cell lysate/extract A. 40 µg hela whole cell lysate/extract B. Control with 2 µg of preimmune rabbit IgG C. Immunoprecipitation of TIP30 protein by 2 µg of TIP30 antibody 10% SDS-PAGE The immunoprecipitated TIP30 protein was detected by TIP30 antibody diluted at 1:1000.

Requested From:

Japan

Laboratory Reagent For In Vitro Research Use Only

Not for resale without prior written consent from LifeSpan BioSciences, Inc.

Created on 9/23/2014

© 2014 LifeSpan BioSciences