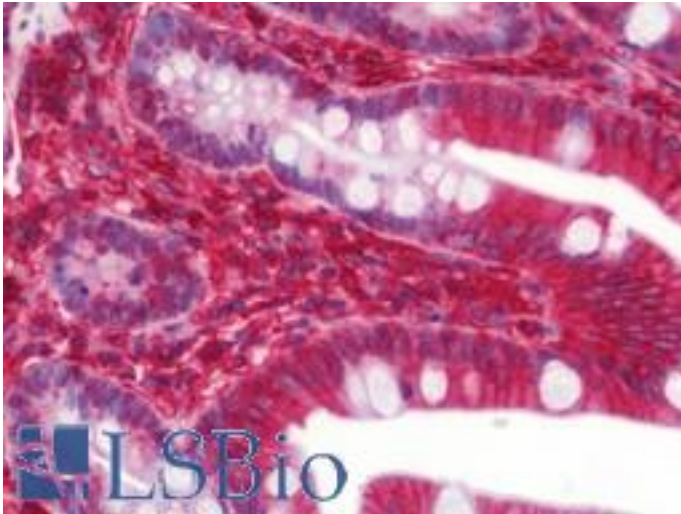


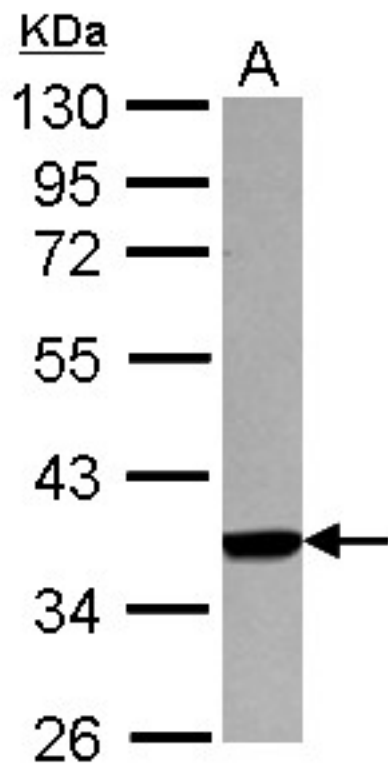
HLA-A Rabbit anti-Human Polyclonal Antibody - LS-B10898 - LSBio	
<b>CatalogID:</b>	LS-B10898
<b>Validation:</b>	This antibody replaces catalog number LS-C155361. It has been validated for use in the following assays: IHC-P.
<b>Target:</b>	major histocompatibility complex, class I, A (HLA-A)
<b>Synonyms:</b>	HLA-A Antibody, Antigen presenting molecule Antibody, Leukocyte antigen class I-A Antibody, HLAA Antibody
<b>Host</b>	HLA-A antibody was produced in Rabbit
<b>Clonality:</b>	Polyclonal
<b>Isotype:</b>	IgG
<b>Immunogen Species:</b>	HLA-A antibody was raised against Human
<b>Antigen Type:</b>	Recombinant protein
<b>Immunogen:</b>	HLA-A antibody was raised against recombinant protein fragment contain a sequence corresponding to a region within amino acids 1 and 206 (P04439) of HLA-A.
<b>Specificity:</b>	Human HLA-A
<b>Reactivity:</b>	Human
<b>Purification:</b>	Immunoaffinity purified
<b>Presentation:</b>	PBS, pH 7, 1% BSA, 20% Glycerol, 0.01% Thimerosal
<b>Recommended Storage:</b>	Keep as concentrated solution. Aliquot and store at -20°C or below. Avoid multiple freeze-thaw cycles.
<b>Usage Summary:</b>	Suggested starting dilutions are as follows: Western blot: 1:500-1:3000. IHC-Paraffin: 7.5 µg/ml. IP: 1:100-1:500. Not yet tested in other applications. Optimal working dilutions should be determined experimentally by the end user.
<b>Uses:</b>	IHC - Paraffin (7.5 µg/ml), Western blot (1:500 - 1:3000) (Optimal dilution to be determined by the researcher)
<b>Size:</b>	50 µl
<b>Concentration:</b>	1 mg/ml

**Immunohistochemistry Image:**



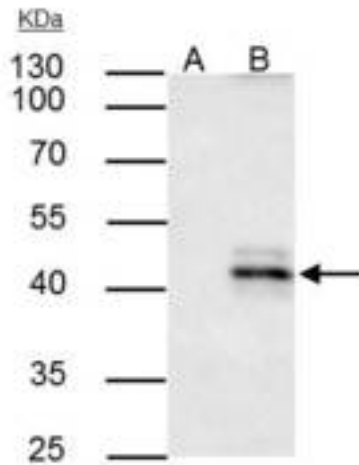
Human Small Intestine: Formalin-Fixed, Paraffin-Embedded (FFPE)

**Western Blot Image:**



Sample (30 ug of whole cell lysate) A: A549 10% SDS PAGE HLA-A antibody diluted at 1:1000

**Immunoprecipitation Image:**



IP samples: A549 whole cell extract A. Control with 4 µg of preimmune Rabbit IgG B. Immunoprecipitation of HLA-A protein by 4 µg HLA-A antibody 10 % SDS-PAGE The immunoprecipitated HLA-A protein was detected by HLA-A antibody diluted at 1:500.

**Requested From:**

Japan

Laboratory Reagent For In Vitro Research Use Only

Not for resale without prior written consent from LifeSpan BioSciences, Inc.

Created on 9/23/2014

© 2014 LifeSpan BioSciences