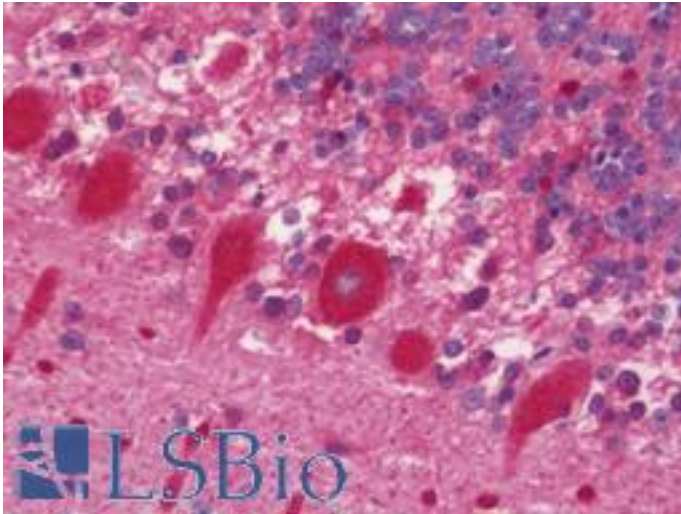


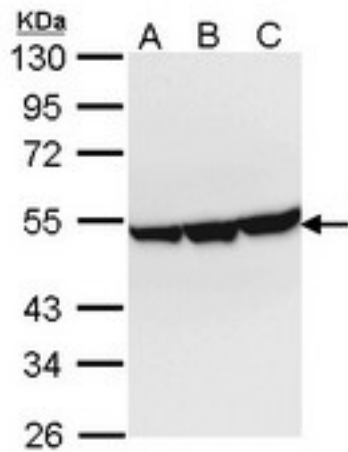
ENO3 / Enolase 3 Rabbit anti-Human Polyclonal (aa196-434) Antibody - LS-B10895 - LSBio	
CatalogID:	LS-B10895
Validation:	This antibody replaces catalog number LS-C186300. It has been validated for use in the following assays: IHC-P.
Target:	enolase 3 (beta, muscle) (ENO3)
Synonyms:	ENO3 Antibody, Beta-enolase Antibody, Enolase 3 Antibody, Enolase 3 (beta, muscle) Antibody, Enolase 3, (beta, muscle) Antibody, Muscle-specific enolase Antibody, MSE Antibody, Skeletal muscle enolase Antibody, GSD13 Antibody
Host	ENO3 antibody was produced in Rabbit
Clonality:	Polyclonal
Isotype:	IgG
Immunogen Species:	ENO3 / Enolase 3 antibody was raised against Human
Antigen Type:	Recombinant protein
Immunogen:	ENO3 / Enolase 3 antibody was raised against recombinant fragment corresponding to a region within amino acids 196 and 434 of ENO3 (SwissProt P13929).
Specificity:	Human ENO3 / Enolase 3
Epitope:	aa196-434
Reactivity:	Human, Mouse, Rat
Purification:	Immunoaffinity purified
Presentation:	0.1 M Tris-glycine, pH 7.0, 10% glycerol, 0.01% Thimerosal
Recommended Storage:	Keep as concentrated solution. Aliquot and store at -20°C or below. Avoid multiple freeze-thaw cycles.
Usage Summary:	IHC-paraffin: Suggested antigen retrieval using heat mediated 10 mM Citrate buffer (pH 6.0) or Tris-EDTA buffer (pH 8.0).
Uses:	IHC - Paraffin (7.5 µg/ml), Western blot (1:1000 - 1:10000) (Optimal dilution to be determined by the researcher)
Size:	100 µl
Concentration:	0.46 mg/ml

Immunohistochemistry Image:



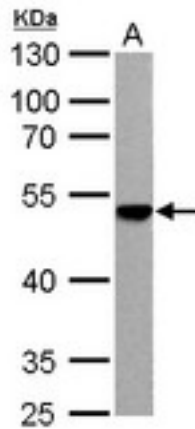
Human Brain, Cerebellum: Formalin-Fixed, Paraffin-Embedded (FFPE)

Western Blot Image:



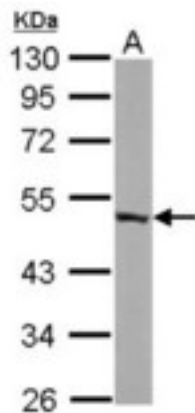
Sample (30 ug of whole cell lysate). A: Hep G2 , B: Molt-4 , C: Raji. 10% SDS PAGE. ENO3 / Enolase 3 antibody diluted at 1:1000.

Western Blot Image:



ENO3 antibody detects ENO3 protein by Western blot analysis. A. 30 ug Rat2 whole cell lysate/extract. 10 % SDS-PAGE. ENO3 antibody dilution:1:1000

Western Blot Image:



Sample (50 ug of whole cell lysate). A: mouse brain. 10% SDS PAGE. ENO3 / Enolase 3 antibody diluted at 1:10000.

Requested From:

Japan

Laboratory Reagent For In Vitro Research Use Only

Not for resale without prior written consent from LifeSpan BioSciences, Inc.

Created on 9/23/2014

© 2014 LifeSpan BioSciences