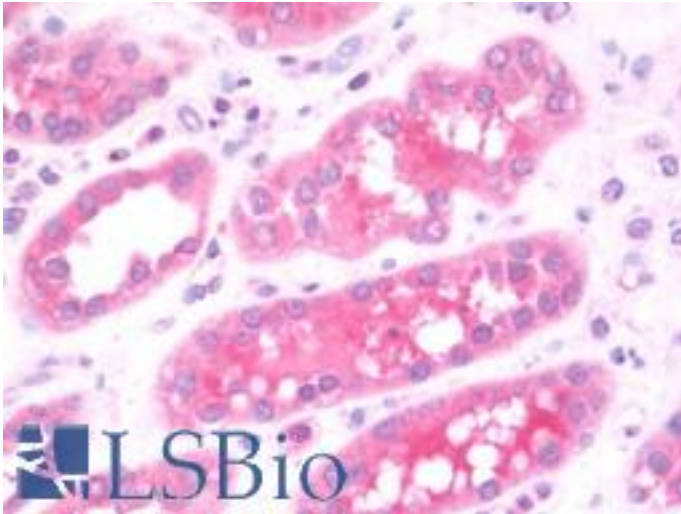


GOLPH3 Rabbit anti-Human Polyclonal Antibody - LS-B10878 - LSBio

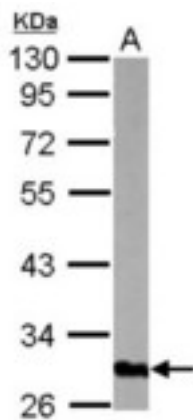
| | |
|-----------------------------|--|
| CatalogID: | LS-B10878 |
| Validation: | This antibody replaces catalog number LS-C155732. It has been validated for use in the following assays: IHC-P. |
| Target: | golgi phosphoprotein 3 (coat-protein) (GOLPH3) |
| Synonyms: | GOLPH3 Antibody, Coat protein GPP34 Antibody, Coat-protein Antibody, Golgi protein Antibody, Golgi phosphoprotein 3 Antibody, GPP34 Antibody, Golgi-associated protein Antibody, GOPP1 Antibody, MIDAS Antibody |
| Host | GOLPH3 antibody was produced in Rabbit |
| Clonality: | Polyclonal |
| Isotype: | IgG |
| Immunogen Species: | GOLPH3 antibody was raised against Human |
| Antigen Type: | Recombinant protein |
| Immunogen: | GOLPH3 antibody was raised against recombinant fragment corresponding to a region within amino acids 36 and 298 of GOLPH3 (SwissProt Q9H4A6). |
| Specificity: | Human/Mouse GOLPH3. |
| Reactivity: | Human, Mouse |
| Purification: | Immunoaffinity purified |
| Presentation: | PBS, pH 7, 1% BSA, 20% Glycerol, 0.01% Thimerosal |
| Recommended Storage: | Aliquot and freeze at -20° C. Avoid freeze-thaw cycles. |
| Usage Summary: | Suggested starting dilutions are as follows: Western blot: 1:500-1:3000, IHC-Paraffin: 7.5 µg/ml. Not yet tested in other applications. Optimal working dilutions should be determined experimentally by the end user. |
| Uses: | IHC - Paraffin (7.5 µg/ml), Western blot (1:500 - 1:3000) (Optimal dilution to be determined by the researcher) |
| Size: | 50 µl |
| Concentration: | 1 mg/ml |

Immunohistochemistry Image:



Human Kidney: Formalin-Fixed, Paraffin-Embedded (FFPE)

Western Blot Image:



Sample (50 ug of whole cell lysate) A: mouse lung 10% SDS PAGE GOLPH3 antibody diluted at 1:3000

Requested From:

Japan

Laboratory Reagent For In Vitro Research Use Only

Not for resale without prior written consent from LifeSpan BioSciences, Inc.

Created on 9/23/2014

© 2014 LifeSpan BioSciences