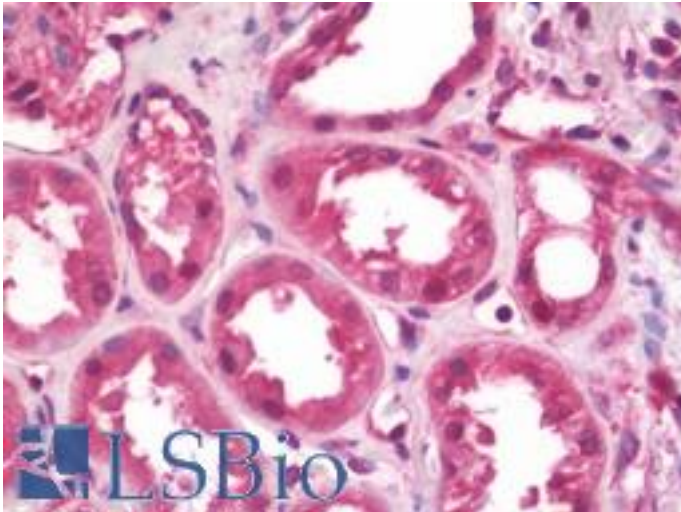


PICALM / CALM Rabbit anti-Human Polyclonal Antibody - LS-B10874 - LSBio

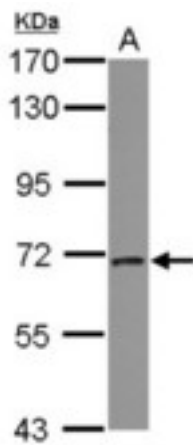
CatalogID:	LS-B10874
Validation:	This antibody replaces catalog number LS-C155593. It has been validated for use in the following assays: IHC-P.
Target:	phosphatidylinositol binding clathrin assembly protein (PICALM)
Synonyms:	PICALM Antibody, CALM Antibody, LAP Antibody, CLTH Antibody
Host	PICALM antibody was produced in Rabbit
Clonality:	Polyclonal
Isotype:	IgG
Immunogen Species:	PICALM / CALM antibody was raised against Human
Antigen Type:	Recombinant protein
Immunogen:	PICALM / CALM antibody was raised against recombinant fragment corresponding to a region within amino acids 1 and 307 of CALM (SwissProt Q13492).
Specificity:	Human PICALM
Reactivity:	Human
Purification:	Immunoaffinity purified
Presentation:	PBS, pH 7, 1% BSA, 20% Glycerol, 0.01% Thimerosal
Recommended Storage:	Keep as concentrated solution. Aliquot and store at -20°C or below. Avoid multiple freeze-thaw cycles.
Usage Summary:	Suggested starting dilutions are as follows: Western blot: 1:500-1:3000, IHC-Paraffin: 7.5 µg/ml [suggested antigen retrieval using heat mediated 10 mM Citrate buffer (pH 6.0) or Tris-EDTA buffer (pH 8.0)]. Not yet tested in other applications. Optimal working dilutions should be determined experimentally by the end user.
Uses:	IHC - Paraffin (7.5 µg/ml), Western blot (1:500 - 1:3000) (Optimal dilution to be determined by the researcher)
Size:	50 µl
Concentration:	1 mg/ml

Immunohistochemistry Image:



Human Kidney: Formalin-Fixed, Paraffin-Embedded (FFPE)

Western Blot Image:



Sample (30 ug of whole cell lysate) A: A549 7.5% SDS PAGE PICALM antibody diluted at 1:2000

Requested From:

Japan

Laboratory Reagent For In Vitro Research Use Only

Not for resale without prior written consent from LifeSpan BioSciences, Inc.

Created on 9/23/2014

© 2014 LifeSpan BioSciences