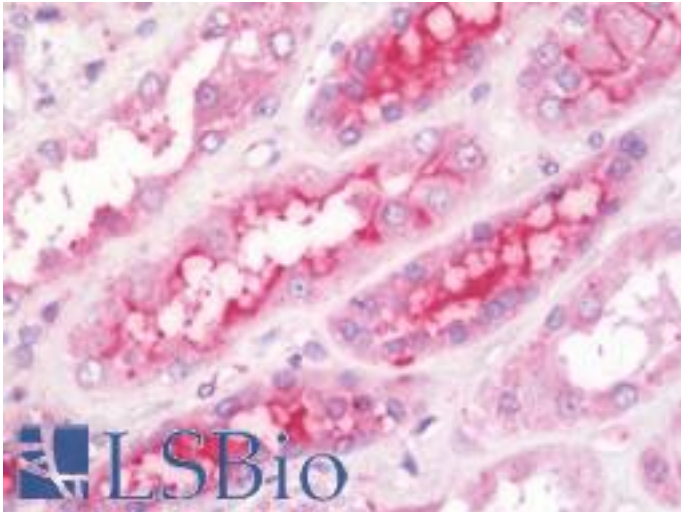


GIT2 Rabbit anti-Human Polyclonal Antibody - LS-B10868 - LSBio

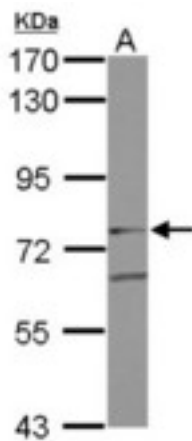
CatalogID:	LS-B10868
Validation:	This antibody replaces catalog number LS-C155459. It has been validated for use in the following assays: IHC-P.
Target:	G protein-coupled receptor kinase interacting ArfGAP 2 (GIT2)
Synonyms:	GIT2 Antibody, CAT2 Antibody, KIAA0148 Antibody, GRK-interacting protein 2 Antibody, ARF GAP GIT2 Antibody, CAT-2 Antibody
Host	GIT2 antibody was produced in Rabbit
Clonality:	Polyclonal
Isotype:	IgG
Immunogen Species:	GIT2 antibody was raised against Human
Antigen Type:	Recombinant protein
Immunogen:	GIT2 antibody was raised against recombinant fragment corresponding to a region within amino acids 1 and 312 of GIT2 (SwissProt Q14161).
Specificity:	Human GIT2
Reactivity:	Human
Purification:	Immunoaffinity purified
Presentation:	0.1 M Tris-glycine, pH 7, 20% Glycerol, 0.01% Thimerosal
Recommended Storage:	Aliquot and freeze at -20° C. Avoid freeze-thaw cycles.
Usage Summary:	Suggested starting dilutions are as follows: Western blot: 1:500-1:3000, ICC/IF: 1:100-1:1000, IHC-Paraffin: 7.5 µg/ml. Not yet tested in other applications. Optimal working dilutions should be determined experimentally by the end user.
Uses:	IHC - Paraffin (7.5 µg/ml), ICC (1:100 - 1:1000), Western blot (1:500 - 1:3000) (Optimal dilution to be determined by the researcher)
Size:	50 µl
Concentration:	0.81 mg/ml

Immunohistochemistry Image:



Human Kidney: Formalin-Fixed, Paraffin-Embedded (FFPE)

Western Blot Image:



Sample (30 ug of whole cell lysate) A: A549 7.5% SDS PAGE GIT2 antibody diluted at 1:1000

Requested From:

Japan

Laboratory Reagent For In Vitro Research Use Only

Not for resale without prior written consent from LifeSpan BioSciences, Inc.

Created on 9/23/2014

© 2014 LifeSpan BioSciences