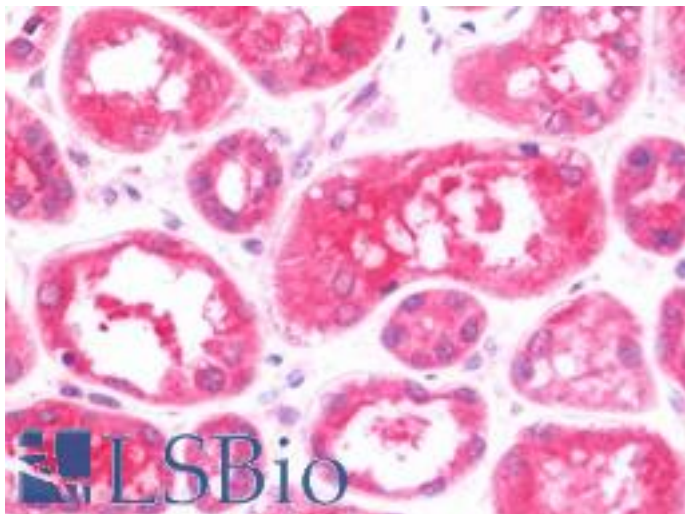


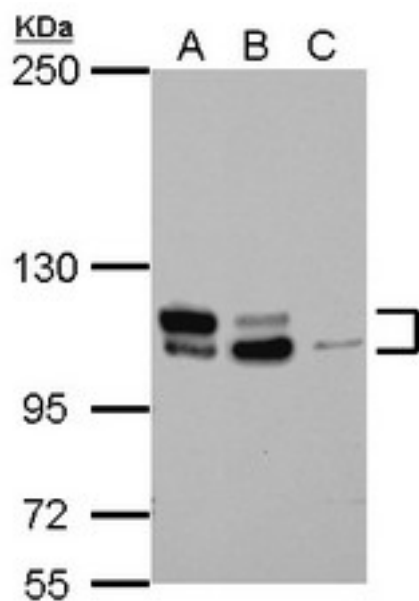
MTBP Rabbit anti-Human Polyclonal Antibody - LS-B10863 - LSBio	
CatalogID:	LS-B10863
Validation:	This antibody replaces catalog number LS-C155440. It has been validated for use in the following assays: IHC-P.
Target:	Mdm2, transformed 3T3 cell double minute 2, p53 binding protein (mouse) binding protein, 104kDa (MTBP)
Synonyms:	MTBP Antibody, Mdm2-binding protein Antibody, MDM2BP Antibody, HMTBP Antibody
Host	MTBP antibody was produced in Rabbit
Clonality:	Polyclonal
Isotype:	IgG
Immunogen Species:	MTBP antibody was raised against Human
Antigen Type:	Recombinant protein
Immunogen:	MTBP antibody was raised against recombinant fragment corresponding to a region within amino acids 23 and 350 of MTBP (SwissProt Q96DY7). Percent identity by BLAST analysis: Human (100%); Bovine (89%); Mouse (81%).
Specificity:	Human MTBP
Reactivity:	Human
Purification:	Immunoaffinity purified
Presentation:	PBS, pH 7, 1% BSA, 20% Glycerol, 0.01% Thimerosal
Recommended Storage:	Aliquot and freeze at -20° C. Avoid freeze-thaw cycles.
Usage Summary:	Suggested starting dilutions are as follows: Western blot: 1:500-1:3000. IHC-Paraffin: 7.5 µg/ml. Not yet tested in other applications. Optimal working dilutions should be determined experimentally by the end user.
Uses:	IHC - Paraffin (7.5 µg/ml), Western blot (1:500 - 1:3000) (Optimal dilution to be determined by the researcher)
Size:	50 µl
Concentration:	1 mg/ml

Immunohistochemistry Image:



Human Kidney: Formalin-Fixed, Paraffin-Embedded (FFPE)

Western Blot Image:



Sample (30 ug of whole cell lysate) A: Jurkat B: THP-1 C: HL-60 5% SDS PAGE MTBP antibody diluted at 1:1000

Requested From:

Japan

Laboratory Reagent For In Vitro Research Use Only

Not for resale without prior written consent from LifeSpan BioSciences, Inc.

Created on 9/23/2014

© 2014 LifeSpan BioSciences