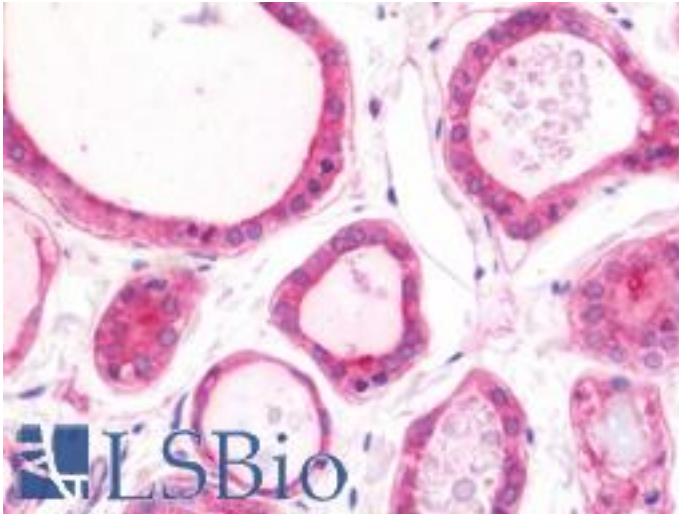


NPEPPS Rabbit anti-Human Polyclonal (aa328-648) Antibody - LS-B10860 - LSBio

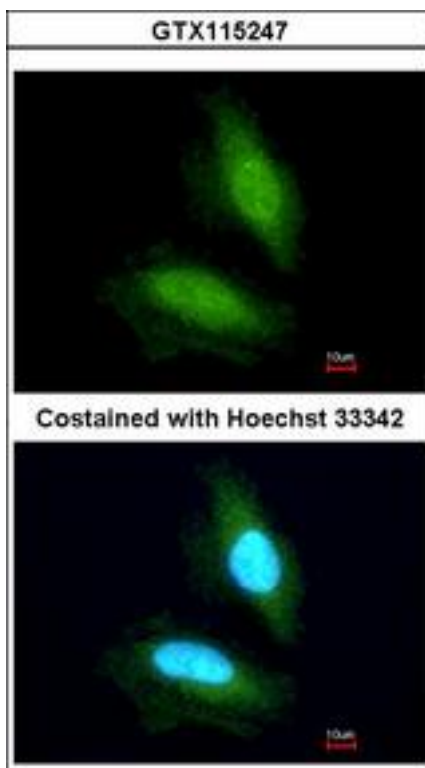
CatalogID:	LS-B10860
Validation:	This antibody replaces catalog number LS-C186402. It has been validated for use in the following assays: IHC-P.
Target:	aminopeptidase puromycin sensitive (NPEPPS)
Synonyms:	NPEPPS Antibody, Cytosol alanyl aminopeptidase Antibody, AAP-S Antibody, Metalloproteinase MP100 Antibody, MP100 Antibody, PSA Antibody
Family / Subfamily:	Exopeptidase / Metallopeptidase M1
Host	NPEPPS antibody was produced in Rabbit
Clonality:	Polyclonal
Isotype:	IgG
Immunogen Species:	NPEPPS antibody was raised against Human
Antigen Type:	Recombinant protein
Immunogen:	NPEPPS antibody was raised against recombinant fragment corresponding to a region within amino acids 328 and 648 of NPEPPS (SwissProt P55786). Percent identity by BLAST analysis: Human (100%); Rat (97%); Bovine (96%); Xenopus (85%).
Specificity:	Human NPEPPS
Epitope:	aa328-648
Reactivity:	Human, Mouse
Purification:	Immunoaffinity purified
Presentation:	0.1 M Tris-glycine, pH 7.0, 20% glycerol, 0.01% Thimerosal
Recommended Storage:	Keep as concentrated solution. Aliquot and store at -20°C or below. Avoid multiple freeze-thaw cycles.
Uses:	IHC - Paraffin (7.5 µg/ml), ICC (1:100 - 1:1000), Western blot (1:500 - 1:3000) (Optimal dilution to be determined by the researcher)
Size:	100 µl
Concentration:	0.38 mg/ml

Immunohistochemistry Image:



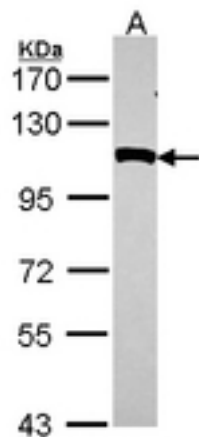
Human Thyroid: Formalin-Fixed, Paraffin-Embedded (FFPE)

Immunocytochemistry Image:



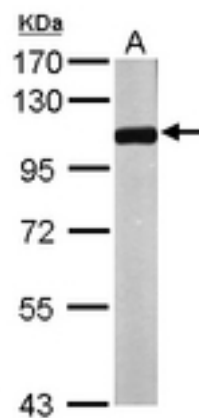
Immunofluorescence of paraformaldehyde-fixed HeLa using NPEPPS antibody at 1:200 dilution.

Western Blot Image:



Sample (30 ug of whole cell lysate). A: Hela. 7.5% SDS PAGE. NPEPPS antibody diluted at 1:1000.

Western Blot Image:



Sample (50 ug of whole cell lysate). A: Mouse brain. 7.5% SDS PAGE. NPEPPS antibody diluted at 1:1000.

Requested From:

Japan

Laboratory Reagent For In Vitro Research Use Only

Not for resale without prior written consent from LifeSpan BioSciences, Inc.

Created on 9/23/2014

© 2014 LifeSpan BioSciences