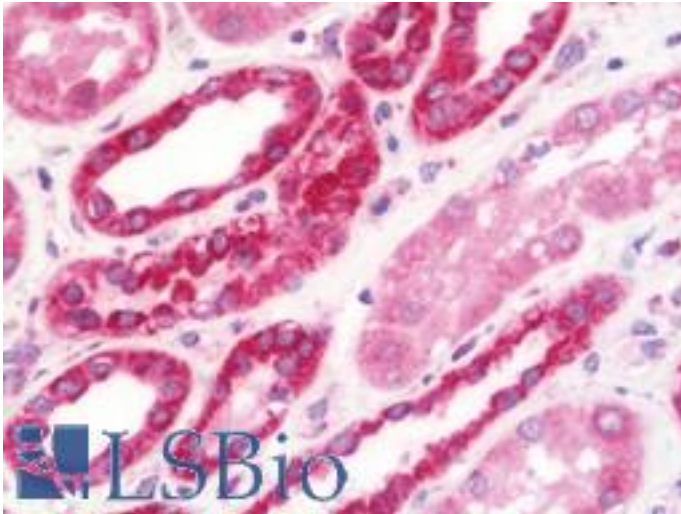


**NDUFS2 Rabbit anti-Human Polyclonal (aa200-430) Antibody - LS-B10858 - LSBio**

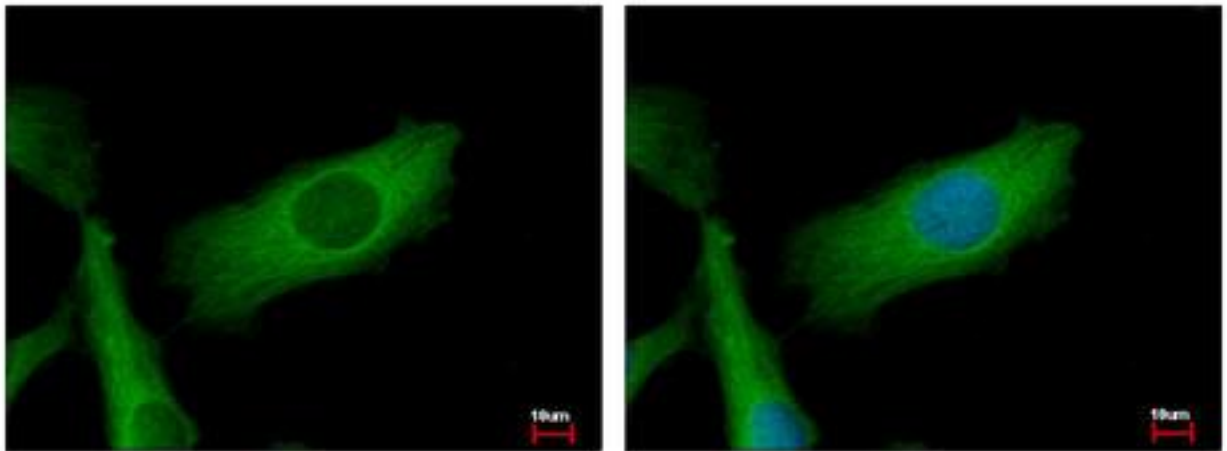
<b>CatalogID:</b>	LS-B10858
<b>Validation:</b>	This antibody replaces catalog number LS-C186383. It has been validated for use in the following assays: IHC-P.
<b>Target:</b>	NADH dehydrogenase (ubiquinone) Fe-S protein 2, 49kDa (NADH-coenzyme Q reductase) (NDUFS2)
<b>Synonyms:</b>	NDUFS2 Antibody, Complex I 49kDa subunit Antibody, Complex I-49kD Antibody, CI-49 Antibody, CI-49kD Antibody
<b>Host</b>	NDUFS2 antibody was produced in Rabbit
<b>Clonality:</b>	Polyclonal
<b>Isotype:</b>	IgG
<b>Immunogen Species:</b>	NDUFS2 antibody was raised against Human
<b>Antigen Type:</b>	Recombinant protein
<b>Immunogen:</b>	NDUFS2 antibody was raised against recombinant fragment corresponding to a region within amino acids 200 and 430 of NDUFS2 (SwissProt O75306).
<b>Specificity:</b>	Human NDUFS2
<b>Epitope:</b>	aa200-430
<b>Reactivity:</b>	Human, Mouse
<b>Purification:</b>	Immunoaffinity purified
<b>Presentation:</b>	0.1 M Tris-glycine, pH 7.0, 20% glycerol, 0.01% Thimerosal
<b>Recommended Storage:</b>	Keep as concentrated solution. Aliquot and store at -20°C or below. Avoid multiple freeze-thaw cycles.
<b>Usage Summary:</b>	IHC-paraffin: Suggested antigen retrieval using heat mediated 10 mM Citrate buffer (pH 6.0) or Tris-EDTA buffer (pH 8.0).
<b>Uses:</b>	IHC - Paraffin (7.5 µg/ml), ICC (1:100 - 1:1000), Western blot (1:1000 - 1:10000) (Optimal dilution to be determined by the researcher)
<b>Size:</b>	50 µl
<b>Concentration:</b>	0.89 mg/ml

**Immunohistochemistry Image:**



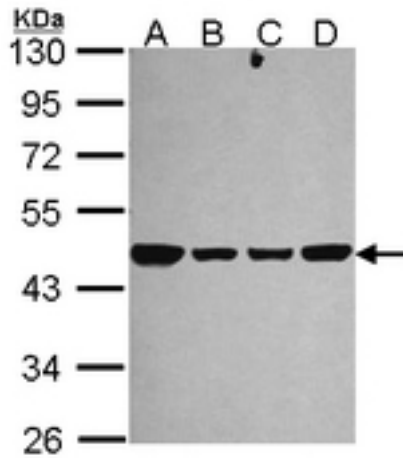
Human Kidney: Formalin-Fixed, Paraffin-Embedded (FFPE)

**Immunocytochemistry Image:**



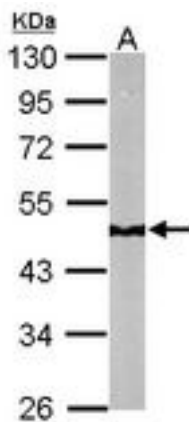
NDUFS2 antibody detects NDUFS2 protein at mitochondria by immunofluorescent analysis. HeLa cells were fixed in 2% paraformaldehyde/culture medium at 37 for 30 min. NDUFS2 protein stained by NDUFS2 antibody diluted at 1:500.

**Western Blot Image:**



Sample (30 ug of whole cell lysate). A:293T, B: A431 , C: JurKat, D: Raji. 10% SDS PAGE. NDUFS2 antibody diluted at 1:1000.

**Western Blot Image:**



Sample (50 ug of whole cell lysate). A: Mouse brain. 10% SDS PAGE. NDUFS2 antibody diluted at 1:10000.

**Requested From:**

Japan

Laboratory Reagent For In Vitro Research Use Only

Not for resale without prior written consent from LifeSpan BioSciences, Inc.

Created on 9/23/2014

© 2014 LifeSpan BioSciences