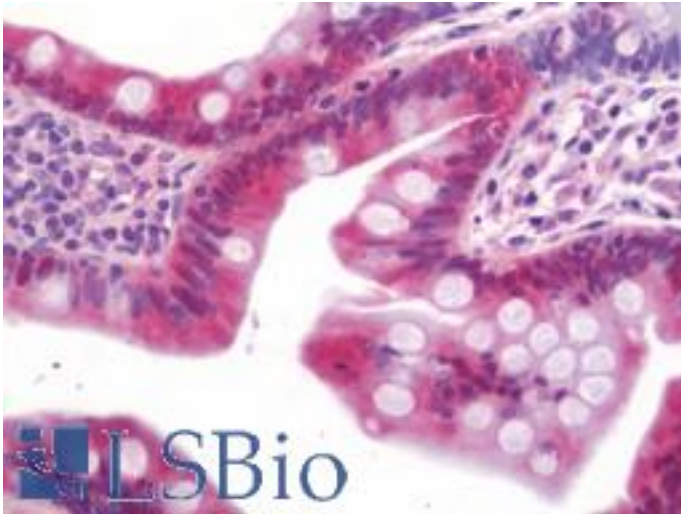


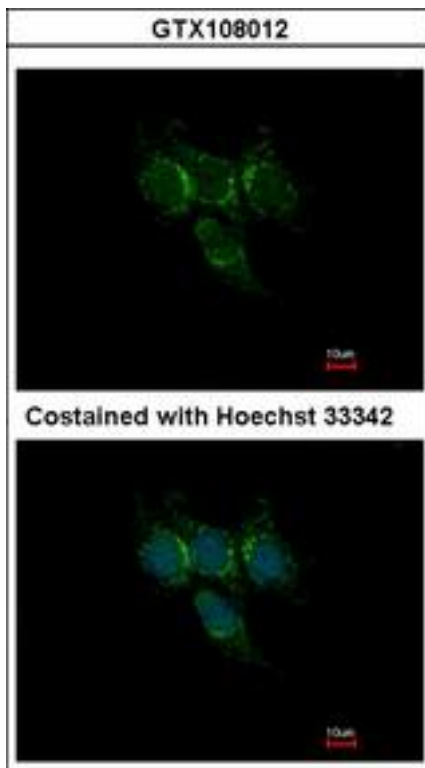
| GSTA1 Rabbit anti-Human Polyclonal Antibody - LS-B10838 - LSBio |   |
|---|---|
| <b>CatalogID:</b>   | LS-B10838   |
| <b>Validation:</b>  | This antibody replaces catalog number LS-C185933. It has been validated for use in the following assays: IHC-P.   |
| <b>Target:</b>  | glutathione S-transferase alpha 1 (GSTA1)   |
| <b>Synonyms:</b>  | GSTA1 Antibody, Gth1 Antibody, Glutathione s-transferase a1 Antibody, Gsta1-1 Antibody, Glutathione S-transferase 2 Antibody, GST class-alpha member 1 Antibody, GST HA subunit 1 Antibody, GST, class alpha, 1 Antibody, Gst-epsilon Antibody, GST2 Antibody |
| <b>Host</b>   | GSTA1 antibody was produced in Rabbit   |
| <b>Clonality:</b>   | Polyclonal  |
| <b>Immunogen Species:</b>                                       | GSTA1 antibody was raised against Human   |
| <b>Reactivity:</b>  | Human, Mouse  |
| <b>Purification:</b>  | Protein A purified  |
| <b>Presentation:</b>  | 0.1 M Tris-glycine, pH 7.0, 10% glycerol, 0.01% Thimerosal  |
| <b>Recommended Storage:</b>                                     | Keep as concentrated solution. Aliquot and store at -20°C or below. Avoid multiple freeze-thaw cycles.  |
| <b>Usage Summary:</b>   | IHC-paraffin: Suggested antigen retrieval using heat mediated 10 mM Citrate buffer (pH 6.0).  |
| <b>Uses:</b>  | IHC - Paraffin (10 µg/ml), ICC (1:100 - 1:1000), Western blot (1:1000 - 1:10000) (Optimal dilution to be determined by the researcher)  |
| <b>Size:</b>  | 50 µl   |
| <b>Concentration:</b>   | 6 mg/ml   |

**Immunohistochemistry Image:**



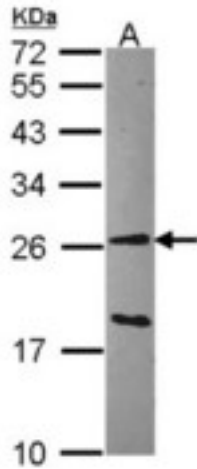
Human Small Intestine: Formalin-Fixed, Paraffin-Embedded (FFPE)

**Immunocytochemistry Image:**



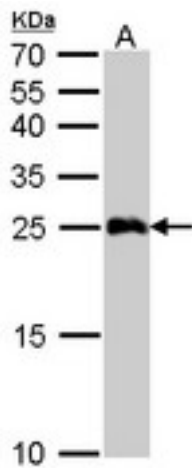
Immunofluorescence of methanol-fixed Hep3B using GSTA1 antibody at 1:500 dilution.

**Western Blot Image:**



Sample (30 ug of whole cell lysate). A: Hep G2 . 12% SDS PAGE. GSTA1 antibody. GSTA1 antibody diluted at 1:1000.

**Western Blot Image:**



GSTA1 antibody detects GSTA1 protein by Western blot analysis. A. 50 ug mouse liver lysate/extract. 12 % SDS-PAGE. GSTA1 antibody dilution:1:5000

**Requested From:**

Japan

Laboratory Reagent For In Vitro Research Use Only

Not for resale without prior written consent from LifeSpan BioSciences, Inc.

Created on 9/23/2014

© 2014 LifeSpan BioSciences