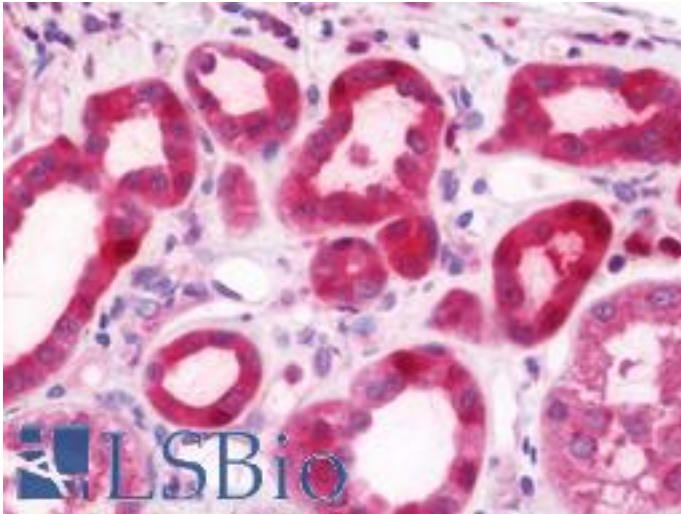


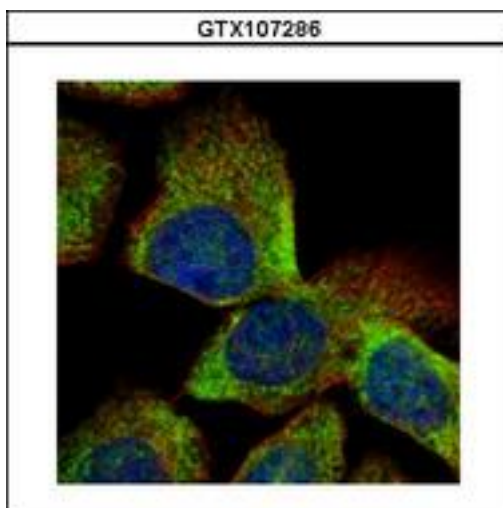
VTA1 Rabbit anti-Human Polyclonal (aa1-276) Antibody - LS-B10834 - LSBio	
<b>CatalogID:</b>	LS-B10834
<b>Validation:</b>	This antibody replaces catalog number LS-C185874. It has been validated for use in the following assays: IHC-P.
<b>Target:</b>	vesicle (multivesicular body) trafficking 1 (VTA1)
<b>Synonyms:</b>	VTA1 Antibody, C6orf55 Antibody, DRG-1 Antibody, HSPC228 Antibody, LYST-interacting protein 5 Antibody, My012 Antibody, SKD1-binding protein 1 Antibody, SBP1 Antibody, LIP5 Antibody
<b>Host</b>	VTA1 antibody was produced in Rabbit
<b>Clonality:</b>	Polyclonal
<b>Isotype:</b>	IgG
<b>Immunogen Species:</b>	VTA1 antibody was raised against Human
<b>Immunogen:</b>	VTA1 antibody was raised against recombinant fragment corresponding to a region within amino acids 1 and 276 of VTA1 (SwissProt Q9NP79).
<b>Specificity:</b>	Human VTA1
<b>Epitope:</b>	aa1-276
<b>Reactivity:</b>	Human
<b>Purification:</b>	Immunoaffinity purified
<b>Presentation:</b>	0.1 M Tris-glycine, pH 7.0, 10% glycerol, 0.01% Thimerosal
<b>Recommended Storage:</b>	Keep as concentrated solution. Aliquot and store at -20°C or below. Avoid multiple freeze-thaw cycles.
<b>Usage Summary:</b>	IHC-paraffin: Suggested antigen retrieval using heat mediated 10 mM Citrate buffer (pH 6.0).
<b>Uses:</b>	IHC - Paraffin (7.5 µg/ml), ICC (1:100 - 1:1000), Western blot (1:500 - 1:3000) (Optimal dilution to be determined by the researcher)
<b>Size:</b>	100 µl
<b>Concentration:</b>	0.74 mg/ml

**Immunohistochemistry Image:**



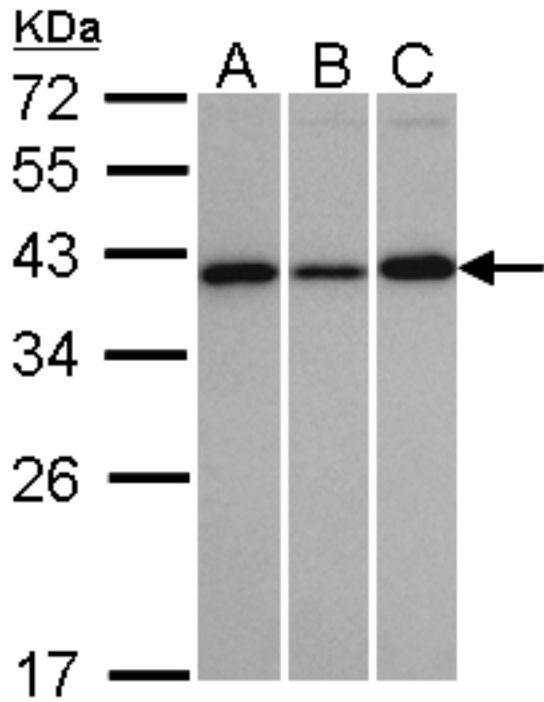
Human Kidney: Formalin-Fixed, Paraffin-Embedded (FFPE)

**Immunocytochemistry Image:**



Confocal immunofluorescence analysis (Olympus FV10i) of methanol-fixed A431 using VTA1 antibody (Green) at 1:500 dilution. Alpha-tubulin filaments were labeled with alpha-tubulin antibody (Red) at 1:500.

Western Blot Image:



Sample (30 ug whole cell lysate). A: H1299, B: HeLa S3, C: MOLT4 . 12% SDS PAGE. VTA1 antibody diluted at 1:1000

Requested From:

Japan

Laboratory Reagent For In Vitro Research Use Only

Not for resale without prior written consent from LifeSpan BioSciences, Inc.

Created on 9/23/2014

© 2014 LifeSpan BioSciences