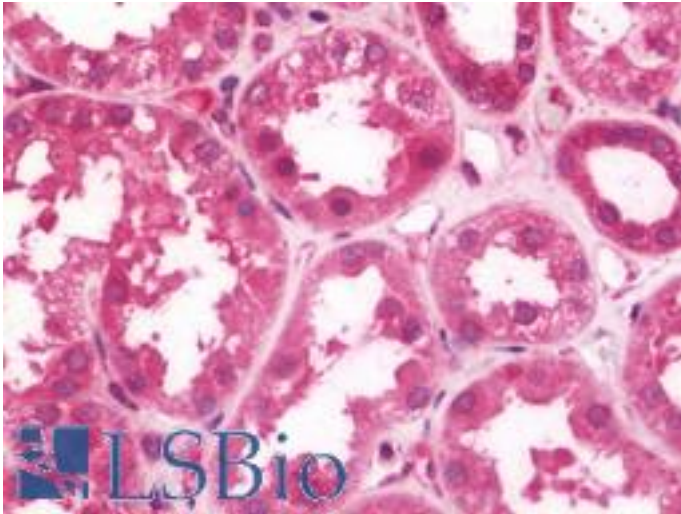


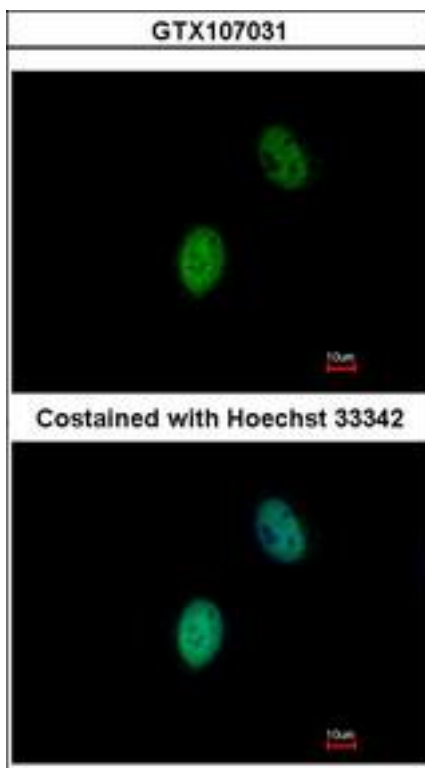
FHL5 Rabbit anti-Human Polyclonal (aa1-226) Antibody - LS-B10831 - LSBio	
CatalogID:	LS-B10831
Validation:	This antibody replaces catalog number LS-C185857. It has been validated for use in the following assays: IHC-P.
Target:	four and a half LIM domains 5 (FHL5)
Synonyms:	FHL5 Antibody, Activator of CREM in testis Antibody, Four and a half LIM domains 5 Antibody, KIAA0776 Antibody, LIM protein ACT Antibody, DJ393D12.2 Antibody, FHL-5 Antibody, RP3-393D12.2 Antibody
Host	FHL5 antibody was produced in Rabbit
Clonality:	Polyclonal
Isotype:	IgG
Immunogen Species:	FHL5 antibody was raised against Human
Antigen Type:	Recombinant protein
Immunogen:	FHL5 antibody was raised against recombinant fragment corresponding to a region within amino acids 1 and 226 of FHL5 (SwissProt Q5TD97). Percent identity by BLAST analysis: Human (100%); Bovine (91%); Rat (90%); Mouse (89%).
Specificity:	Human FHL5
Epitope:	aa1-226
Reactivity:	Human
Purification:	Immunoaffinity purified
Presentation:	0.1 M Tris-glycine, pH 7.0, 10% glycerol, 0.01% Thimerosal
Recommended Storage:	Keep as concentrated solution. Aliquot and store at -20°C or below. Avoid multiple freeze-thaw cycles.
Usage Summary:	IHC-paraffin: Suggested antigen retrieval using heat mediated 10 mM Citrate buffer (pH 6.0).
Uses:	IHC - Paraffin (7.5 µg/ml), ICC (1:100 - 1:1000), Western blot (1:500 - 1:3000) (Optimal dilution to be determined by the researcher)
Size:	50 µl
Concentration:	1 mg/ml

Immunohistochemistry Image:



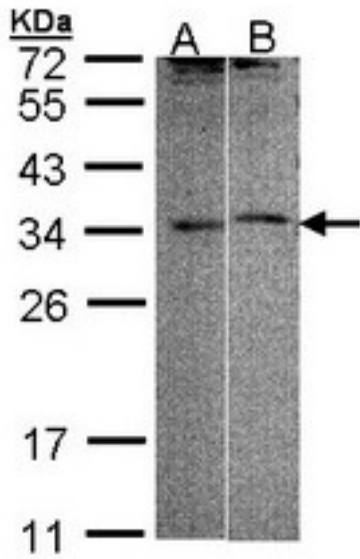
Human Kidney: Formalin-Fixed, Paraffin-Embedded (FFPE)

Immunocytochemistry Image:



Immunofluorescence of paraformaldehyde-fixed HeLa using FHL5 antibody at 1:500 dilution.

Western Blot Image:



Sample (30 ug of whole cell lysate). A:293T, B: Raji. 12 % SDS PAGE. FHL5 antibody diluted at 1:1000

Requested From:

Japan

Laboratory Reagent For In Vitro Research Use Only

Not for resale without prior written consent from LifeSpan BioSciences, Inc.

Created on 9/23/2014

© 2014 LifeSpan BioSciences