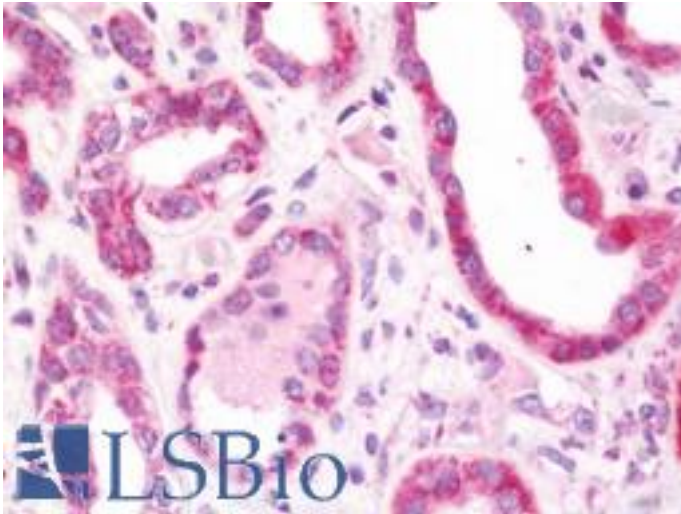


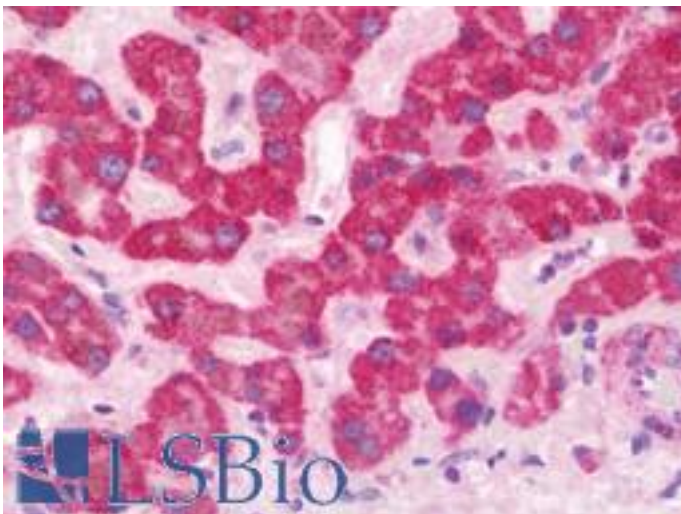
RAB2A / RAB2 Rabbit anti-Human Polyclonal (aa148-212) Antibody - LS-B10828 - LSBio	
CatalogID:	LS-B10828
Validation:	This antibody replaces catalog number LS-C185795. It has been validated for use in the following assays: IHC-P.
Target:	RAB2A, member RAS oncogene family
Synonyms:	RAB2A Antibody, Ras-related protein rab-2 Antibody, RAB2 Antibody, LHX Antibody, Ras-related protein Rab-2A Antibody
Family / Subfamily:	Ras GTPase superfamily IPR001806 / RAS oncogene
Host	RAB2A antibody was produced in Rabbit
Clonality:	Polyclonal
Isotype:	IgG
Immunogen Species:	RAB2A / RAB2 antibody was raised against Human
Antigen Type:	Synthetic peptide
Immunogen:	RAB2A / RAB2 antibody was raised against synthetic peptide corresponding to a region within amino acids 148 and 212 of RAB2A (SwissProt P61019). Percent identity by BLAST analysis: Human, Dog, Monkey, Rabbit (100%).
Specificity:	Human RAB2A / RAB2
Epitope:	aa148-212
Reactivity:	Human, Monkey, Dog, Rabbit
Purification:	Immunoaffinity purified
Presentation:	0.1 M Tris-glycine, pH 7.0, 10% glycerol, 0.01% Thimerosal
Recommended Storage:	Keep as concentrated solution. Aliquot and store at -20°C or below. Avoid multiple freeze-thaw cycles.
Usage Summary:	IHC-paraffin: Suggested antigen retrieval using heat mediated 10 mM Citrate buffer (pH 6.0) or Tris-EDTA buffer (pH 8.0).
Uses:	IHC - Paraffin (7.5 µg/ml), Western blot (1:500 - 1:3000) (Optimal dilution to be determined by the researcher)
Size:	100 µl
Concentration:	0.51 mg/ml

Immunohistochemistry Image:



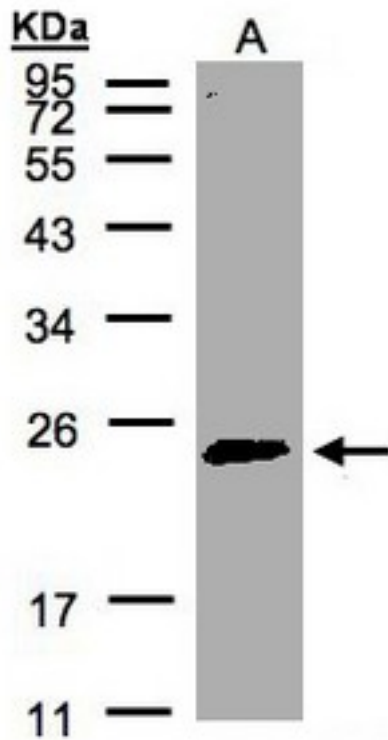
Human Kidney: Formalin-Fixed, Paraffin-Embedded (FFPE)

Immunohistochemistry Image:



Human Liver: Formalin-Fixed, Paraffin-Embedded (FFPE)

Western Blot Image:



Sample (30 ug of whole cell lysate). A: HeLa S3. 12% SDS PAGE. RAB2A / RAB2 antibody diluted at 1:500

Requested From:

Japan

Laboratory Reagent For In Vitro Research Use Only

Not for resale without prior written consent from LifeSpan BioSciences, Inc.

Created on 9/23/2014

© 2014 LifeSpan BioSciences