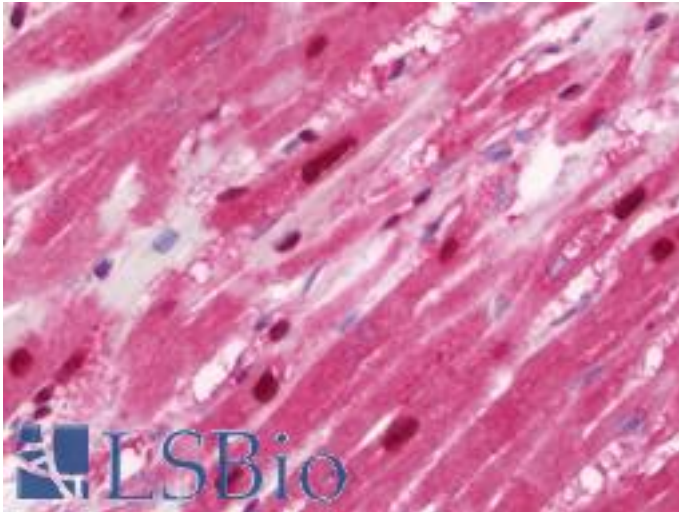


HSPA6 Rabbit anti-Human Polyclonal (aa377-628) Antibody - LS-B10826 - LSBio

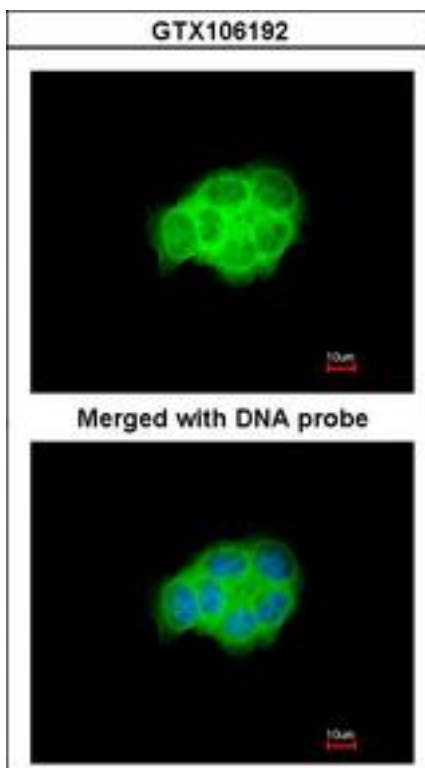
CatalogID:	LS-B10826
Validation:	This antibody replaces catalog number LS-C185768. It has been validated for use in the following assays: IHC-P.
Target:	heat shock 70kDa protein 6 (HSP70B') (HSPA6)
Synonyms:	HSPA6 Antibody, Heat shock 70 kd protein b Antibody, Heat shock 70 kDa protein 6 Antibody, Heat shock 70 kDa protein B Antibody, Heat shock 70 kd protein 7 Antibody, HSP70B Antibody
Host	HSPA6 antibody was produced in Rabbit
Clonality:	Polyclonal
Isotype:	IgG
Immunogen Species:	HSPA6 antibody was raised against Human
Antigen Type:	Recombinant protein
Immunogen:	HSPA6 antibody was raised against recombinant fragment corresponding to a region within amino acids 377 and 628 of HSPA6 (SwissProt P17066).
Specificity:	Human HSPA6
Epitope:	aa377-628
Reactivity:	Human
Purification:	Immunoaffinity purified
Presentation:	0.1 M Tris-glycine, pH 7.0, 10% glycerol, 0.01% Thimerosal
Recommended Storage:	Keep as concentrated solution. Aliquot and store at -20°C or below. Avoid multiple freeze-thaw cycles.
Usage Summary:	IHC-paraffin: Suggested antigen retrieval using heat mediated 10 mM Citrate buffer (pH 6.0) or Tris-EDTA buffer (pH 8.0).
Uses:	IHC - Paraffin (7.5 µg/ml), ICC (1:100 - 1:1000), Western blot (1:500 - 1:3000) (Optimal dilution to be determined by the researcher)
Size:	50 µl
Concentration:	1 mg/ml

Immunohistochemistry Image:



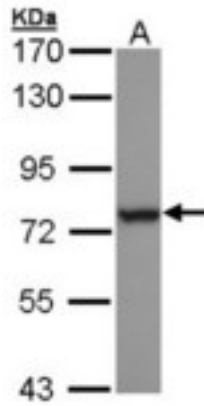
Human Heart: Formalin-Fixed, Paraffin-Embedded (FFPE)

Immunocytochemistry Image:



Immunofluorescence of paraformaldehyde-fixed A431 using HSPA6 antibody at 1:200 dilution.

Western Blot Image:



Sample (30 ug of whole cell lysate). A: H1299. 7.5% SDS PAGE. HSPA6 antibody diluted at 1:1000

Requested From:

Japan

Laboratory Reagent For In Vitro Research Use Only

Not for resale without prior written consent from LifeSpan BioSciences, Inc.

Created on 9/23/2014

© 2014 LifeSpan BioSciences