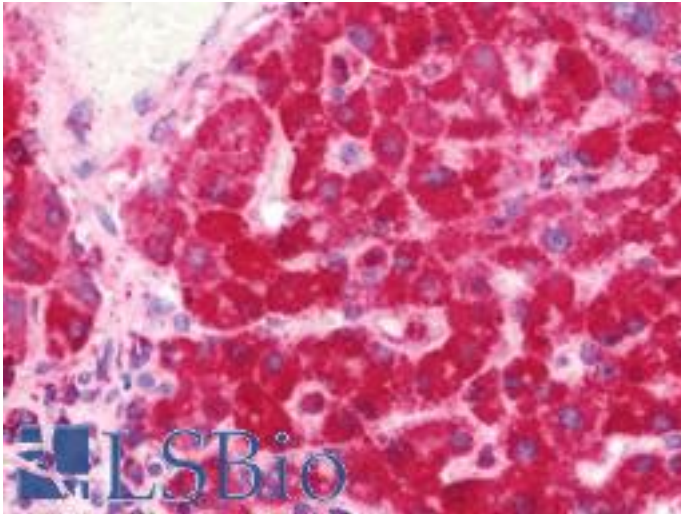


MDH / MDH2 Rabbit anti-Human Polyclonal (aa40-319) Antibody - LS-B10823 - LSBio

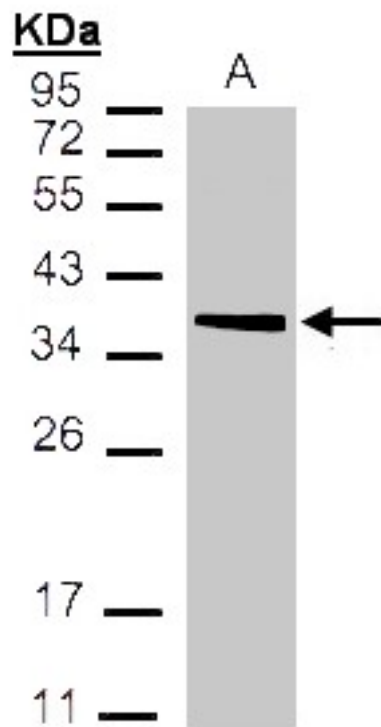
CatalogID:	LS-B10823
Validation:	This antibody replaces catalog number LS-C185743. It has been validated for use in the following assays: IHC-P.
Target:	malate dehydrogenase 2, NAD (mitochondrial) (MDH2)
Synonyms:	MDH2 Antibody, MDH Antibody, M-MDH Antibody, MGC:3559 Antibody, MOR1 Antibody
Host	MDH2 antibody was produced in Rabbit
Clonality:	Polyclonal
Immunogen Species:	MDH / MDH2 antibody was raised against Human
Antigen Type:	Recombinant protein
Immunogen:	MDH / MDH2 antibody was raised against recombinant fragment corresponding to a region within amino acids 40 and 319 of MDH2 (SwissProt P40926).
Specificity:	Human MDH / MDH2
Epitope:	aa40-319
Reactivity:	Human, Mouse, Rat
Purification:	Immunoaffinity purified
Presentation:	0.1 M Tris-glycine, pH 7.0, 10% glycerol, 0.01% Thimerosal
Recommended Storage:	Keep as concentrated solution. Aliquot and store at -20°C or below. Avoid multiple freeze-thaw cycles.
Uses:	IHC - Paraffin (7.5 µg/ml), Western blot (1:1000 - 1:10000) (Optimal dilution to be determined by the researcher)
Size:	100 µl
Concentration:	0.76 mg/ml

Immunohistochemistry Image:



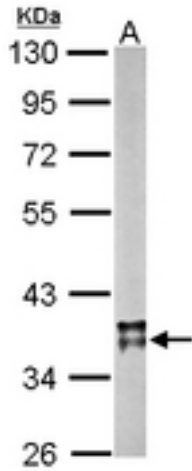
Human Liver: Formalin-Fixed, Paraffin-Embedded (FFPE)

Western Blot Image:



Sample (30 ug of whole cell lysate). A:293T. 12% SDS PAGE. MDH / MDH2 antibody diluted at 1:1000

Western Blot Image:



Sample (20 ug of whole cell lysate). A: mouse brain. 10% SDS PAGE. MDH / MDH2 antibody diluted at 1:10000.

Requested From:

Japan

Laboratory Reagent For In Vitro Research Use Only

Not for resale without prior written consent from LifeSpan BioSciences, Inc.

Created on 9/23/2014

© 2014 LifeSpan BioSciences