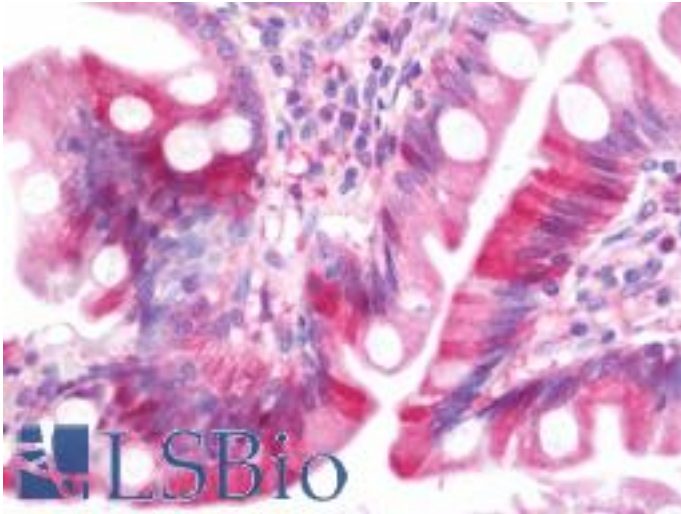


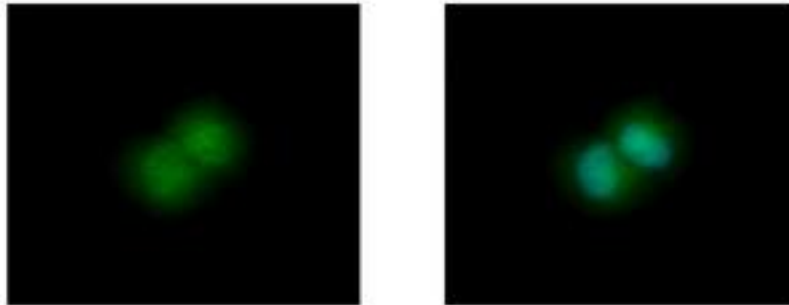
GLO1 / Glyoxalase I Rabbit anti-Human Polyclonal (aa1-184) Antibody - LS-B10822 - LSBio	
CatalogID:	LS-B10822
Validation:	This antibody replaces catalog number LS-C185737. It has been validated for use in the following assays: IHC-P.
Target:	glyoxalase I (GLO1)
Synonyms:	GLO1 Antibody, Aldoketomutase Antibody, Glx I Antibody, Glyoxalase domain containing 1 Antibody, Glyoxalase I Antibody, Lactoyl glutathione lyase Antibody, Lactoylglutathione lyase Antibody, GLOD1 Antibody, Methylglyoxalase Antibody, Ketone-aldehyde mutase Antibody, GLYI Antibody
Host	GLO1 antibody was produced in Rabbit
Clonality:	Polyclonal
Isotype:	IgG
Immunogen Species:	GLO1 / Glyoxalase I antibody was raised against Human
Antigen Type:	Recombinant protein
Immunogen:	GLO1 / Glyoxalase I antibody was raised against recombinant fragment corresponding to a region within amino acids 1 and 184 of Glyoxalase I (SwissProt Q04760). Percent identity by BLAST analysis: Human (100%); Rat (91%); Bovine (90%); Xenopus (82%).
Specificity:	Human GLO1 / Glyoxalase I
Epitope:	aa1-184
Reactivity:	Human, Mouse
Purification:	Immunoaffinity purified
Presentation:	0.1 M Tris-glycine, pH 7.0, 10% glycerol, 0.01% Thimerosal
Recommended Storage:	Keep as concentrated solution. Aliquot and store at -20°C or below. Avoid multiple freeze-thaw cycles.
Usage Summary:	IHC-paraffin: Suggested antigen retrieval using heat mediated 10 mM Citrate buffer (pH 6.0) or Tris-EDTA buffer (pH 8.0).
Uses:	IHC - Paraffin (7.5 µg/ml), ICC (1:100 - 1:1000), Western blot (1:500 - 1:3000) (Optimal dilution to be determined by the researcher)
Size:	50 µl
Concentration:	1 mg/ml

Immunohistochemistry Image:



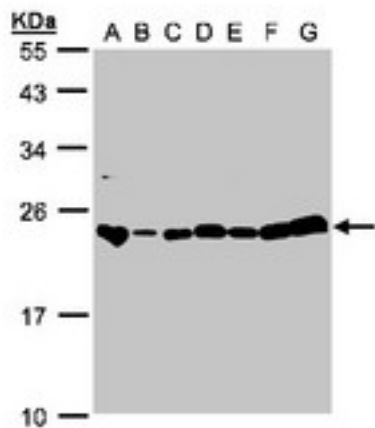
Human Small Intestine: Formalin-Fixed, Paraffin-Embedded (FFPE)

Immunocytochemistry Image:



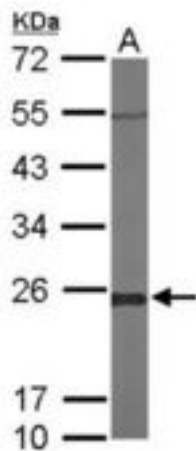
Glyoxalase I antibody [N1C3] detects GLO1 protein at cytoplasm and nucleus by immunofluorescent analysis. HepG2 cells were fixed in 4% paraformaldehyde at RT for 15 min. GLO1 protein stained by Glyoxalase I antibody [N1C3] diluted at 1:500.

Western Blot Image:



Sample (30g whole cell lysate). A:293T, B: A431 , C: H1299, D: HeLa S3 , E: Hep G2 . F: MOLT4 . G: Raji . 12% SDS PAGE. GLO1 / Glyoxalase I antibody diluted at 1:1000

Western Blot Image:



Sample (50 ug of whole cell lysate). A: Mouse brain. 12% SDS PAGE. GLO1 / Glyoxalase I antibody diluted at 1:1000.

Requested From:

Japan

Laboratory Reagent For In Vitro Research Use Only

Not for resale without prior written consent from LifeSpan BioSciences, Inc.

Created on 9/23/2014

© 2014 LifeSpan BioSciences