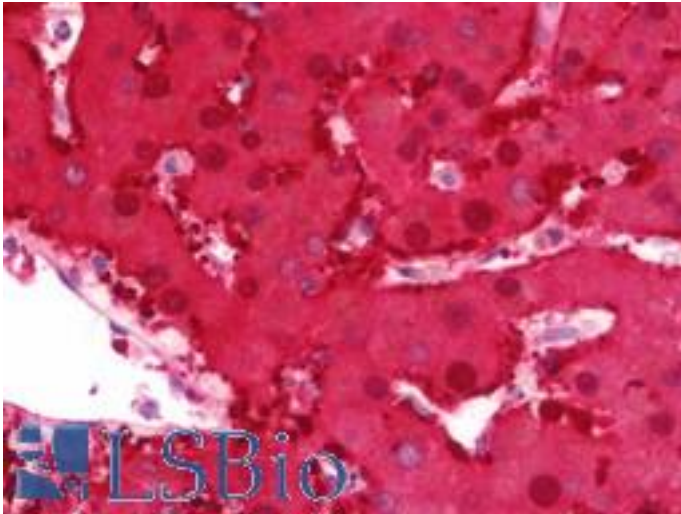


**DDH / AKR1C1 Rabbit anti-Human Polyclonal (aa22-248) Antibody - LS-B10819 - LSBio**

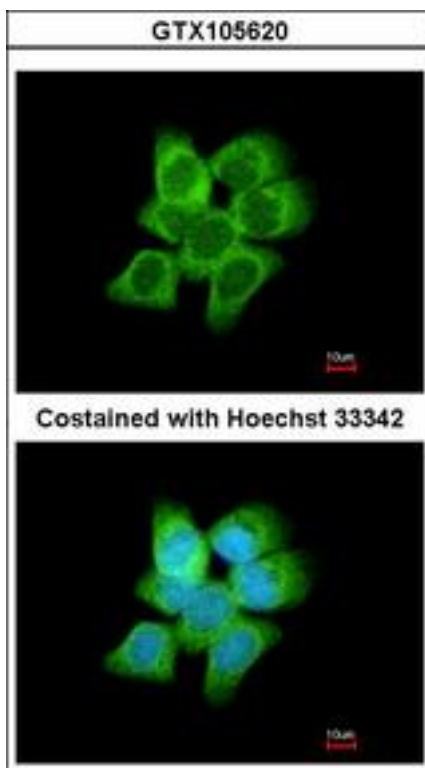
<b>CatalogID:</b>	LS-B10819
<b>Validation:</b>	This antibody replaces catalog number LS-C185716. It has been validated for use in the following assays: IHC-P.
<b>Target:</b>	aldo-keto reductase family 1, member C1 (AKR1C1)
<b>Synonyms:</b>	AKR1C1 Antibody, 2-ALPHA-HSD Antibody, 20-alpha-HSD Antibody, Aldo-keto reductase C Antibody, Bile acid binding protein Antibody, Chlordecone reductase homolog Antibody, DDH1 Antibody, Dihydrodiol dehydrogenase 2 Antibody, DD1 Antibody, DDH Antibody, Dihydrodiol dehydrogenase 1/2 Antibody, DD1/DD2 Antibody, Dihydrodiol dehydrogenase 1 Antibody, H-37 Antibody, HAKRC Antibody, HBAB Antibody, Indanol dehydrogenase Antibody, MBAB Antibody
<b>Host</b>	AKR1C1 antibody was produced in Rabbit
<b>Clonality:</b>	Polyclonal
<b>Immunogen Species:</b>	DDH / AKR1C1 antibody was raised against Human
<b>Antigen Type:</b>	Recombinant protein
<b>Immunogen:</b>	DDH / AKR1C1 antibody was raised against recombinant fragment corresponding to a region within amino acids 22 and 248 of AKR1C1 (SwissProt Q04828).
<b>Specificity:</b>	Human DDH / AKR1C1
<b>Epitope:</b>	aa22-248
<b>Reactivity:</b>	Human, Mouse
<b>Purification:</b>	Immunoaffinity purified
<b>Presentation:</b>	0.1 M Tris-glycine, pH 7.0, 10% glycerol, 0.01% Thimerosal
<b>Recommended Storage:</b>	Keep as concentrated solution. Aliquot and store at -20°C or below. Avoid multiple freeze-thaw cycles.
<b>Usage Summary:</b>	IHC-paraffin: Suggested antigen retrieval using heat mediated 10 mM Citrate buffer (pH 6.0).
<b>Uses:</b>	IHC - Paraffin (7.5 µg/ml), ICC (1:100 - 1:1000), Western blot (1:500 - 1:3000) (Optimal dilution to be determined by the researcher)
<b>Size:</b>	50 µl
<b>Concentration:</b>	1 mg/ml

**Immunohistochemistry Image:**



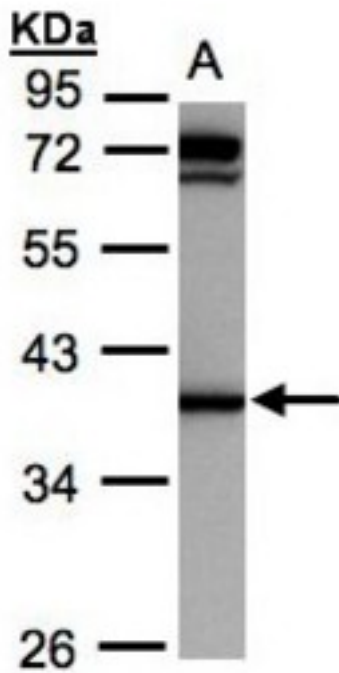
Human Liver: Formalin-Fixed, Paraffin-Embedded (FFPE)

**Immunocytochemistry Image:**



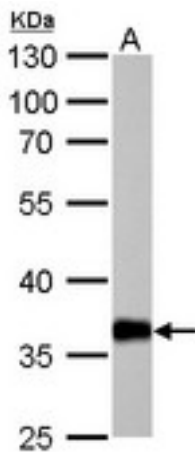
Immunofluorescence of methanol-fixed A431 using AKR1C1 antibody at 1:200 dilution.

**Western Blot Image:**



Sample (30 ug whole cell lysate). A: Raji . 10% SDS PAGE. DDH / AKR1C1 antibody diluted at 1:1000

**Western Blot Image:**



AKR1C1 antibody detects AKR1C1 protein by Western blot analysis. A. 50 ug mouse liver lysate/extract. 10 % SDS-PAGE. AKR1C1 antibody dilution:1:1000

**Requested From:**

Japan

Laboratory Reagent For In Vitro Research Use Only

Not for resale without prior written consent from LifeSpan BioSciences, Inc.

Created on 9/23/2014

© 2014 LifeSpan BioSciences