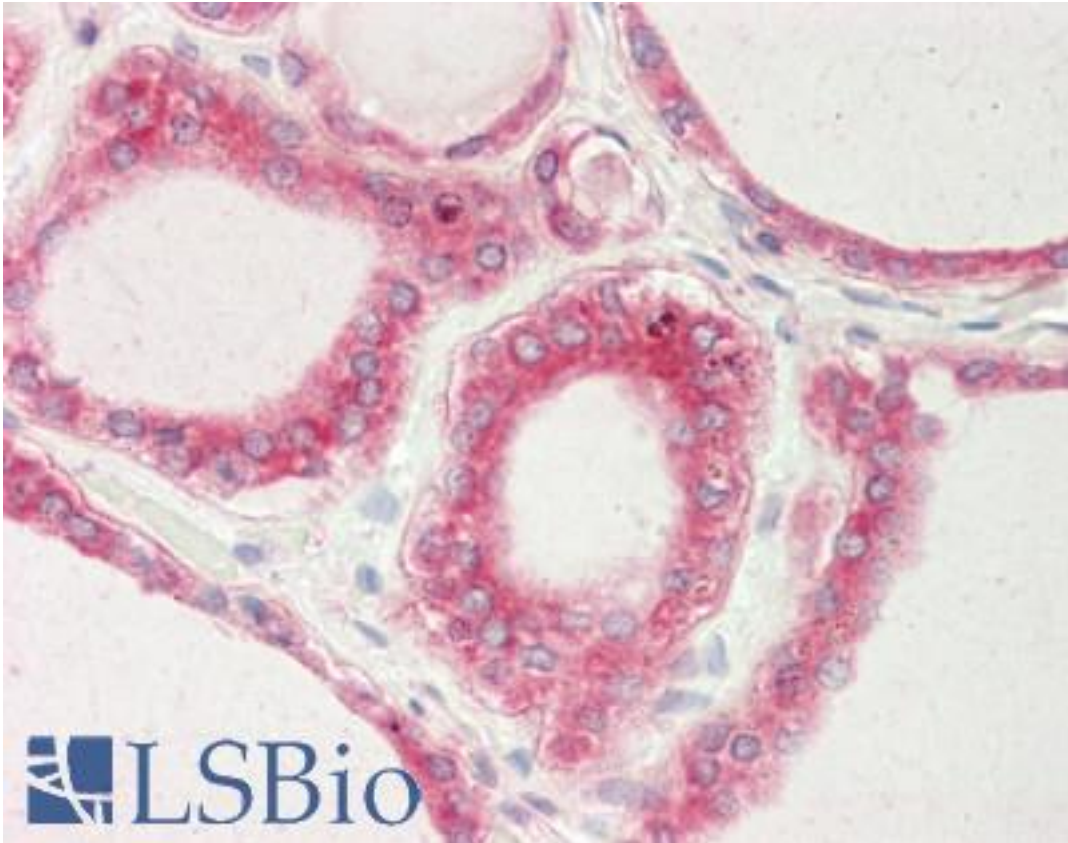


GOK / STIM1 Sheep anti-Human Polyclonal (N-Terminus) Antibody - LS-B10815 - LSBio

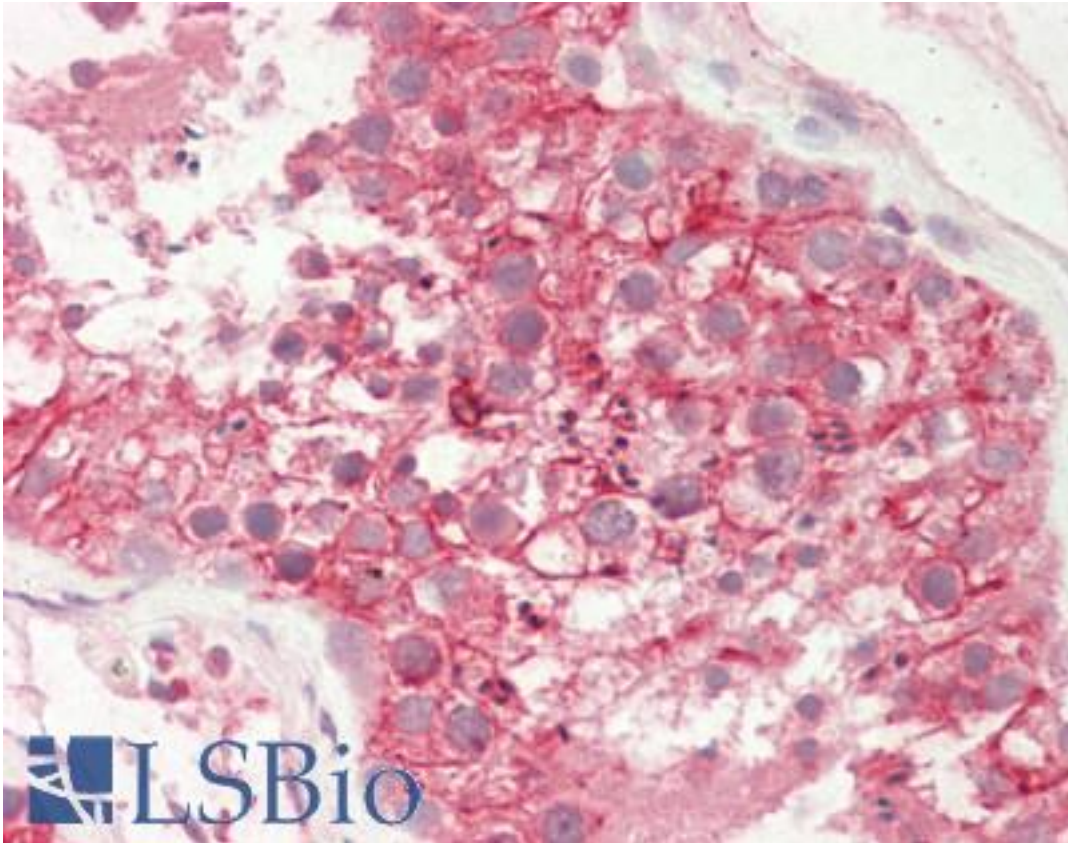
CatalogID:	LS-B10815
Validation:	This antibody replaces catalog number LS-C209378. It has been validated for use in the following assays: IHC-P.
Target:	stromal interaction molecule 1 (STIM1)
Synonyms:	STIM1 Antibody, D11S4896E Antibody, Stromal interaction molecule 1 Antibody, GOK Antibody, STIM1L Antibody
Host	STIM1 antibody was produced in Sheep
Clonality:	Polyclonal
Immunogen Species:	GOK / STIM1 antibody was raised against Human
Antigen Type:	Synthetic peptide
Immunogen:	GOK / STIM1 antibody was raised against stim 1 affinity purified antibody was prepared from whole sheep serum produced by repeated immunizations with a synthetic peptide near the N-terminus of human Stim 1.
Specificity:	BLAST analysis suggests cross-reactivity with rat and mouse based on 100% sequence homology.
Epitope:	N-Terminus
Reactivity:	Human
Purification:	Immunoaffinity purified
Presentation:	0.02 M potassium phosphate, 0.15 M sodium chloride, pH 7.2, 30% glycerol, sterile filtered
Recommended Storage:	Short term 4°C, long term aliquot and store at -20°C, avoid freeze thaw cycles. Centrifuge product before removing cap. Only dilute immediately prior to use.
Usage Summary:	Anti-Stim I antibody is useful for ELISA, IHC-P and Western Blot. Expect a band approximately ~77kD corresponding to the appropriate cell lysate or extract.
Uses:	IHC - Paraffin (5 µg/ml), Western blot (1 µg/ml), ELISA (1:10000) (Optimal dilution to be determined by the researcher)
Size:	50 µg

Immunohistochemistry Image:



Human Thyroid: Formalin-Fixed, Paraffin-Embedded (FFPE)

Immunohistochemistry Image:



Human Testis: Formalin-Fixed, Paraffin-Embedded (FFPE)

Requested From:

Japan

Laboratory Reagent For In Vitro Research Use Only

Not for resale without prior written consent from LifeSpan BioSciences, Inc.

Created on 9/23/2014

© 2014 LifeSpan BioSciences