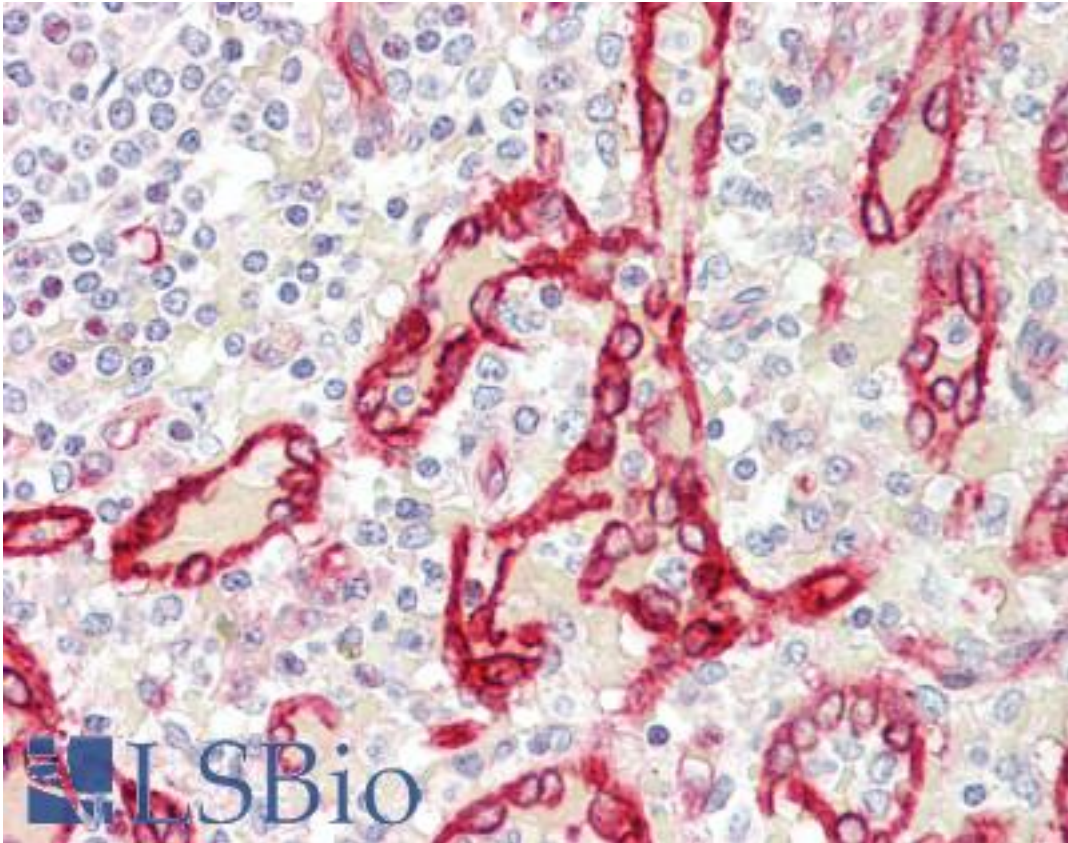


SDR / SDPR Rabbit anti-Human Polyclonal (C-Terminus) Antibody - LS-B10805 - LSBio

| | |
|-----------------------------|--|
| CatalogID: | LS-B10805 |
| Validation: | This antibody replaces catalog number LS-C209364. It has been validated for use in the following assays: IHC-P. |
| Target: | serum deprivation response (SDPR) |
| Synonyms: | SDPR Antibody, Cavin-2 Antibody, CAVIN2 Antibody, PS-p68 Antibody, SDR Antibody, Serum deprivation response Antibody |
| Host | SDPR antibody was produced in Rabbit |
| Clonality: | Polyclonal |
| Immunogen Species: | SDR / SDPR antibody was raised against Human |
| Antigen Type: | Synthetic peptide |
| Immunogen: | SDR / SDPR antibody was raised against sSDPR affinity purified antibody was prepared from whole rabbit serum produced by repeated immunizations with a synthetic peptide corresponding to the C-terminal region of human SDPR. |
| Specificity: | This antibody is specific towards Cavin 2 SDR. |
| Epitope: | C-Terminus |
| Reactivity: | Human |
| Purification: | Immunoaffinity purified |
| Presentation: | 0.02 M potassium phosphate, 0.15 M sodium chloride, pH 7.2, 50% glycerol, sterile filtered |
| Recommended Storage: | Short term 4°C, long term aliquot and store at -20°C, avoid freeze thaw cycles. Centrifuge product before removing cap. Only dilute immediately prior to use. |
| Usage Summary: | Anti-SDPR antibody is useful for ELISA, Immunostaining, and Western Blot. Expect a band approximately ~40.5 kD corresponding to the appropriate cell lysate or extract. |
| Uses: | IHC - Paraffin (5 µg/ml), Immunofluorescence (1:100 - 1:500), Western blot (1 µg/ml), ELISA (1:20000 - 1:60000) (Optimal dilution to be determined by the researcher) |
| Size: | 50 µg |

Immunohistochemistry Image:



Human Spleen: Formalin-Fixed, Paraffin-Embedded (FFPE)

Requested From:

Japan

Laboratory Reagent For In Vitro Research Use Only

Not for resale without prior written consent from LifeSpan BioSciences, Inc.

Created on 9/23/2014

© 2014 LifeSpan BioSciences