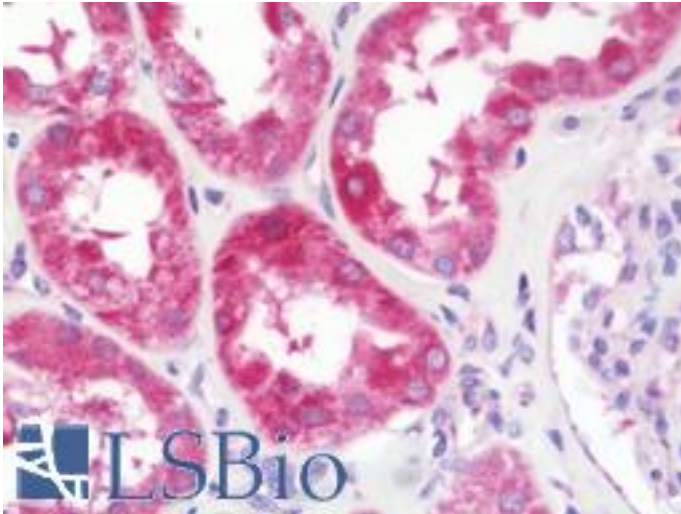


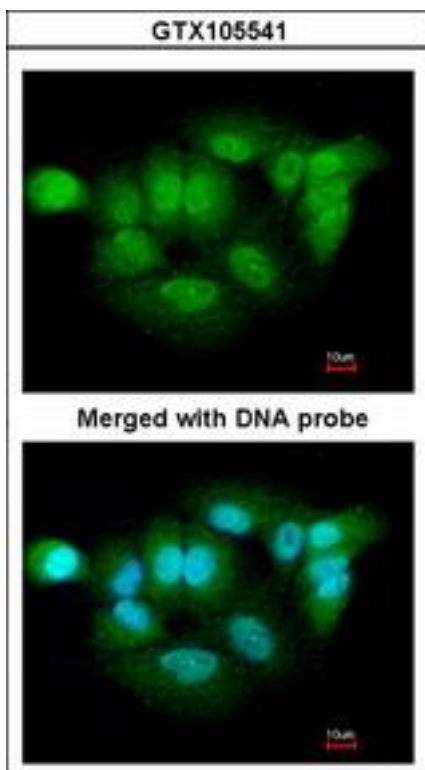
XPNPEP3 Rabbit anti-Human Polyclonal (aa12-507) Antibody - LS-B10804 - LSBio	
CatalogID:	LS-B10804
Validation:	This antibody replaces catalog number LS-C185709. It has been validated for use in the following assays: IHC-P.
Target:	X-prolyl aminopeptidase (aminopeptidase P) 3, putative (XPNPEP3)
Synonyms:	XPNPEP3 Antibody, APP3 Antibody, Aminopeptidase P3 Antibody, NPHPL1 Antibody, X-Pro aminopeptidase 3 Antibody
Host	XPNPEP3 antibody was produced in Rabbit
Clonality:	Polyclonal
Isotype:	IgG
Immunogen Species:	XPNPEP3 antibody was raised against Human
Antigen Type:	Recombinant protein
Immunogen:	XPNPEP3 antibody was raised against recombinant fragment corresponding to a region within amino acids 12 and 507 of XPNPEP3 (SwissProt Q9NQH7). Percent identity by BLAST analysis: Human (100%); Rat, Bovine (90%).
Specificity:	Human XPNPEP3
Epitope:	aa12-507
Reactivity:	Human
Purification:	Immunoaffinity purified
Presentation:	0.1 M Tris-glycine, pH 7.0, 10% glycerol, 0.01% Thimerosal
Recommended Storage:	Keep as concentrated solution. Aliquot and store at -20°C or below. Avoid multiple freeze-thaw cycles.
Uses:	IHC - Paraffin (7.5 µg/ml), ICC (1:100 - 1:1000), Western blot (1:500 - 1:3000) (Optimal dilution to be determined by the researcher)
Size:	50 µl
Concentration:	1 mg/ml

Immunohistochemistry Image:



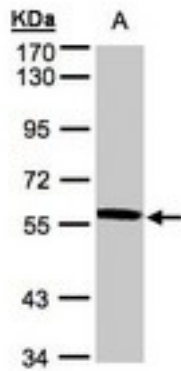
Human Kidney: Formalin-Fixed, Paraffin-Embedded (FFPE)

Immunocytochemistry Image:



Immunofluorescence of paraformaldehyde-fixed A549 using XPNPEP3 antibody at 1:200 dilution.

Western Blot Image:



Sample (30 ug whole cell lysate). A: A431. 7.5% SDS PAGE. XPNPEP3 antibody diluted at 1:500

Requested From:

Japan

Laboratory Reagent For In Vitro Research Use Only

Not for resale without prior written consent from LifeSpan BioSciences, Inc.

Created on 9/23/2014

© 2014 LifeSpan BioSciences