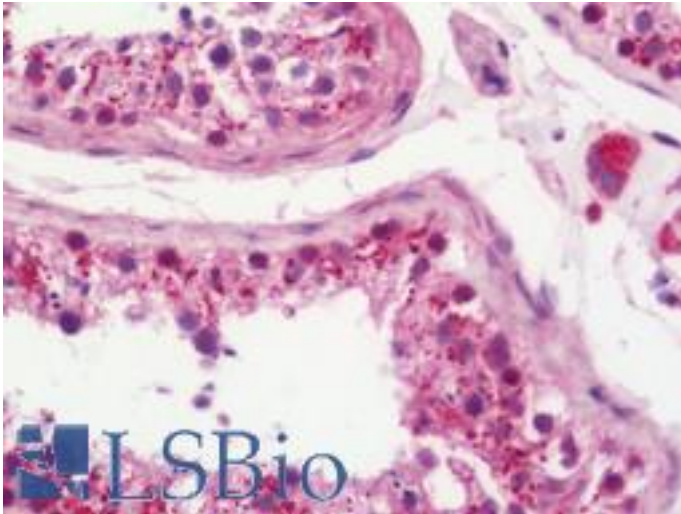


PRKCA / PKC-Alpha Rabbit anti-Human Polyclonal (aa1-250) Antibody - LS-B10801 - LSBio

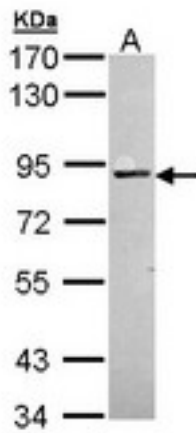
CatalogID:	LS-B10801
Validation:	This antibody replaces catalog number LS-C186201. It has been validated for use in the following assays: IHC-P.
Target:	protein kinase C, alpha (PRKCA)
Synonyms:	PRKCA Antibody, Aging-associated gene 6 Antibody, AAG6 Antibody, Alpha PKC Antibody, PKC-A Antibody, Pkcalpha Antibody, Protein kinase C alpha type Antibody, PKC Alpha Antibody, PKC-alpha Antibody, PKCA Antibody, Protein kinase c alpha Antibody, Protein kinase C, alpha Antibody
Family / Subfamily:	Protein Kinase / PKC
Host	PRKCA antibody was produced in Rabbit
Clonality:	Polyclonal
Isotype:	IgG
Immunogen Species:	PRKCA / PKC-Alpha antibody was raised against Human
Antigen Type:	Recombinant protein
Immunogen:	PRKCA / PKC-Alpha antibody was raised against recombinant fragment corresponding to a region within amino acids 1 and 250 of PKC alpha (SwissProt P17252). Percent identity by BLAST analysis: Human (100%); Rabbit, Rat (99%); Bovine (98%); Chicken (95%); Xenopus (92%).
Specificity:	Human PKC Alpha
Epitope:	aa1-250
Reactivity:	Human, Mouse
Purification:	Immunoaffinity purified
Presentation:	0.1 M Tris-glycine, pH 7.0, 10% glycerol, 0.01% Thimerosal
Recommended Storage:	Keep as concentrated solution. Aliquot and store at -20°C or below. Avoid multiple freeze-thaw cycles.
Usage Summary:	IHC-paraffin: Suggested antigen retrieval using heat mediated 10 mM Citrate buffer (pH 6.0) or Tris-EDTA buffer (pH 8.0).
Uses:	IHC - Paraffin (7.5 µg/ml), Western blot (1:500 - 1:3000) (Optimal dilution to be determined by the researcher)
Size:	50 µl
Concentration:	0.69 mg/ml

Immunohistochemistry Image:



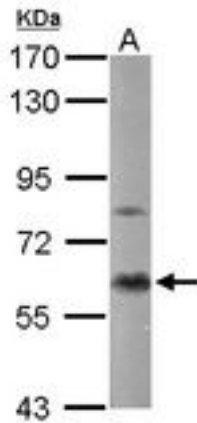
Human Testis: Formalin-Fixed, Paraffin-Embedded (FFPE)

Western Blot Image:



Sample (30 ug of whole cell lysate). A: H1299. 7.5% SDS PAGE. PKC Alpha antibody diluted at 1:1000.

Western Blot Image:



Sample (50 ug of whole cell lysate). A: Mouse brain. 7.5% SDS PAGE. PKC Alpha antibody diluted at 1:1000.

Requested From:

Japan

Laboratory Reagent For In Vitro Research Use Only

Not for resale without prior written consent from LifeSpan BioSciences, Inc.

Created on 9/23/2014

© 2014 LifeSpan BioSciences