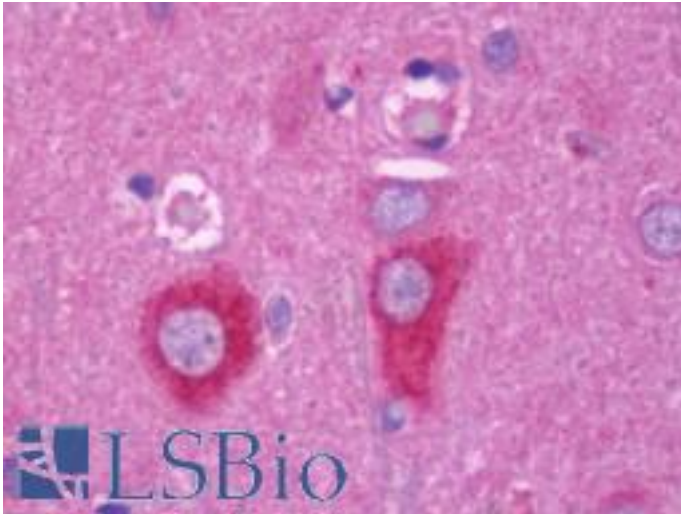


RAB6A / RAB6 Rabbit anti-Human Polyclonal (aa1-208) Antibody - LS-B10800 - LSBio

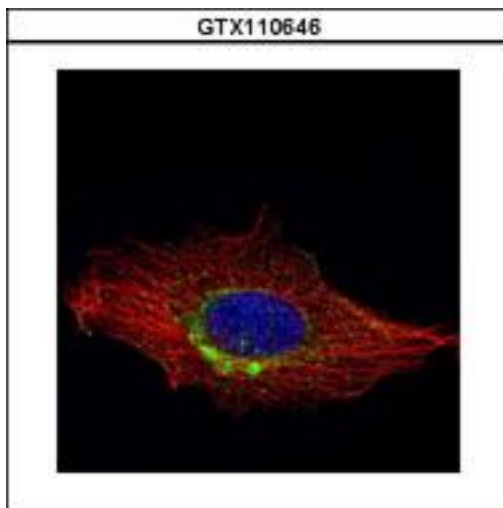
CatalogID:	LS-B10800
Validation:	This antibody replaces catalog number LS-C186169. It has been validated for use in the following assays: IHC-P.
Target:	RAB6A, member RAS oncogene family
Synonyms:	RAB6A Antibody, Rab GTPase Antibody, Rab-6 Antibody, RAB6 Antibody, Ras-related protein rab-6 Antibody, RAB6A' Antibody, Ras-related protein Rab-6A Antibody
Family / Subfamily:	Ras GTPase superfamily IPR001806 / RAS oncogene
Host	RAB6A antibody was produced in Rabbit
Clonality:	Polyclonal
Isotype:	IgG
Immunogen Species:	RAB6A / RAB6 antibody was raised against Human
Antigen Type:	Recombinant protein
Immunogen:	RAB6A / RAB6 antibody was raised against recombinant fragment corresponding to a region within amino acids 1 and 208 of RAB6A (SwissProt P20340). Percent identity by BLAST analysis: Human (100%); Bovine (98%); Chicken, Pig, Rat (97%); Xenopus (96%); Zebrafish (85%).
Specificity:	Human RAB6
Epitope:	aa1-208
Reactivity:	Human, Mouse, Rat
Purification:	Immunoaffinity purified
Presentation:	0.1 M Tris-glycine, pH 7.0, 10% glycerol, 0.01% Thimerosal
Recommended Storage:	Keep as concentrated solution. Aliquot and store at -20°C or below. Avoid multiple freeze-thaw cycles.
Usage Summary:	IHC-paraffin: Suggested antigen retrieval using heat mediated 10 mM Citrate buffer (pH 6.0) or Tris-EDTA buffer (pH 8.0).
Uses:	IHC - Paraffin (7.5 µg/ml), ICC (1:100 - 1:1000), Western blot (1:500 - 1:3000) (Optimal dilution to be determined by the researcher)
Size:	50 µl
Concentration:	0.63 mg/ml

Immunohistochemistry Image:



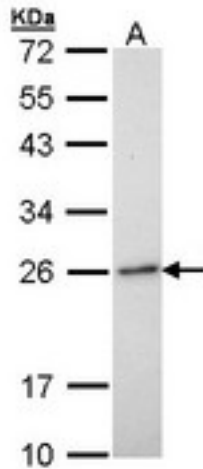
Human Brain, Cortex: Formalin-Fixed, Paraffin-Embedded (FFPE)

Immunocytochemistry Image:



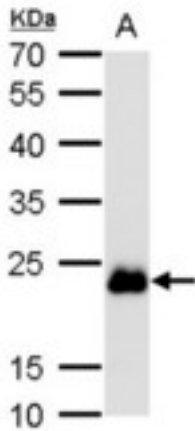
Confocal immunofluorescence analysis (Olympus FV10i) of methanol-fixed HeLa using RAB6A antibody (Green) at 1:1000 dilution. Alpha-tubulin filaments were labeled with alpha-tubulin antibody (Red) at 1:2000.

Western Blot Image:



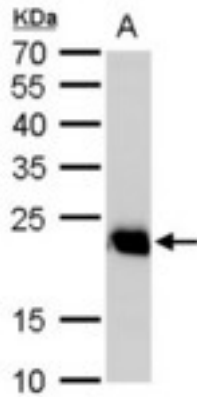
Sample (30 ug of whole cell lysate). A: H1299. 12% SDS PAGE. RAB6 antibody diluted at 1:1000.

Western Blot Image:



Sample (50 ug of whole cell lysate). A: Mouse brain lysate/extract. 12% SDS PAGE. RAB6 antibody diluted at 1:1000.

Western Blot Image:



Sample (50 ug of whole cell lysate). A: Rat brain lysate/extract. 12% SDS PAGE. RAB6 antibody diluted at 1:1000.

Requested From:

Japan

Laboratory Reagent For In Vitro Research Use Only

Not for resale without prior written consent from LifeSpan BioSciences, Inc.

Created on 9/23/2014

© 2014 LifeSpan BioSciences