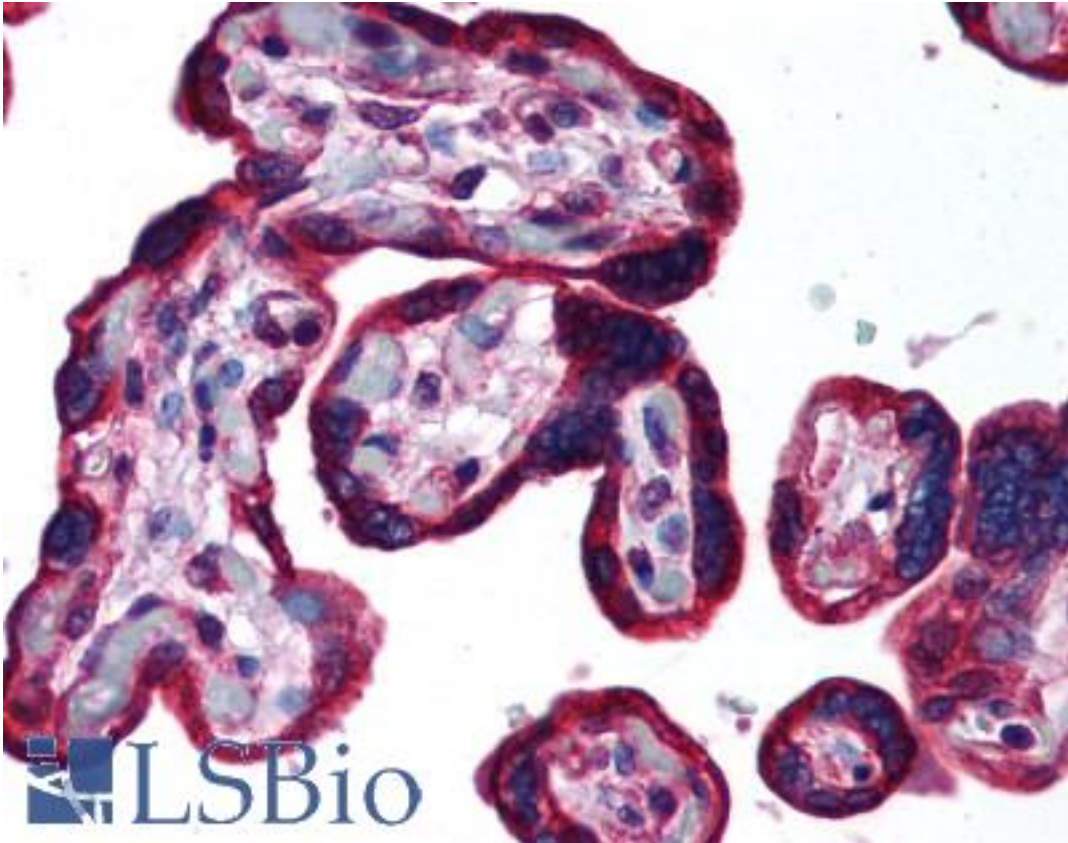


KRT19 / CK19 / Cytokeratin 19 Rabbit anti-Mouse Polyclonal (aa21-40) Antibody - LS-B108 - LSBio	
CatalogID:	LS-B108
Validation:	This antibody replaces catalog number LS-C3372. It has been validated for use in the following assays: IHC.
Target:	keratin 19 (KRT19)
Synonyms:	KRT19 Antibody, CK19 Antibody, Cytokeratin 19 Antibody, Cytokeratin-19 Antibody, Keratin 19 Antibody, Keratin-19 Antibody, CK-19 Antibody, K19 Antibody, K1CS Antibody, Keratin, type I, 40-kd Antibody
Host	KRT19 antibody was produced in Rabbit
Clonality:	Polyclonal
Immunogen Species:	KRT19 / CK19 / Cytokeratin 19 antibody was raised against Mouse
Antigen Type:	Synthetic peptide
Immunogen:	KRT19 / CK19 / Cytokeratin 19 antibody was raised against synthetic peptide from mouse KRT19 / Cytokeratin 19.
Specificity:	Peptide comprised of amino acids 21-40 of mouse cytokeratin 19
Epitope:	aa21-40
Reactivity:	Mouse, Human, Monkey
Purification:	Protein G purified
Presentation:	PBS, 0.09% sodium azide.
Recommended Storage:	Long term: -20°C; Short term: +4°C. Avoid repeat freeze-thaw cycles.
Usage Summary:	Immunohistochemistry: LS-B108 was validated for use in immunohistochemistry on a panel of 21 formalin-fixed, paraffin-embedded (FFPE) human tissues after heat induced antigen retrieval in pH 6.0 citrate buffer. After incubation with the primary antibody, slides were incubated with biotinylated secondary antibody, followed by alkaline phosphatase-streptavidin and chromogen. The stained slides were evaluated by a pathologist to confirm staining specificity. The optimal working concentration for LS-B108 was determined to be 5 ug/ml.
Uses:	IHC - Paraffin (5 µg/ml), ELISA (1:000 - 1:1000) (Optimal dilution to be determined by the researcher)
Size:	50 µg
Concentration:	1 mg/ml

Immunohistochemistry Image:



Anti-Cytokeratin 19 antibody IHC of human placenta. Immunohistochemistry of formalin-fixed, paraffin-embedded tissue after heat-induced antigen retrieval. Antibody LS-B108 concentration 5 ug/ml.

Requested From:

Japan

Laboratory Reagent For In Vitro Research Use Only

Not for resale without prior written consent from LifeSpan BioSciences, Inc.

Created on 9/23/2014

© 2014 LifeSpan BioSciences