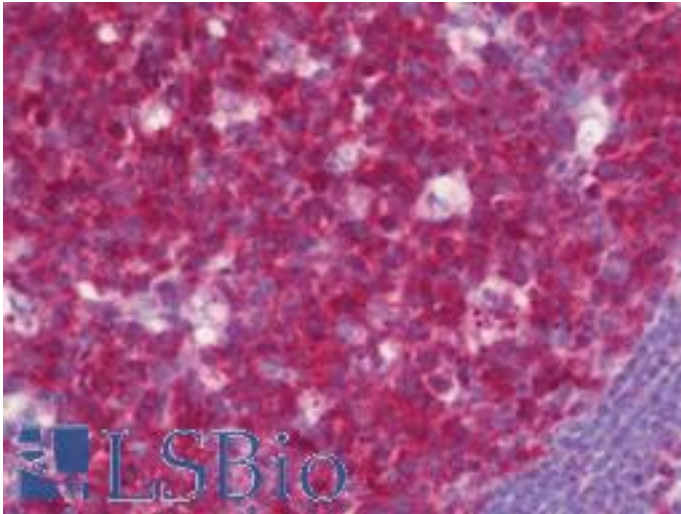


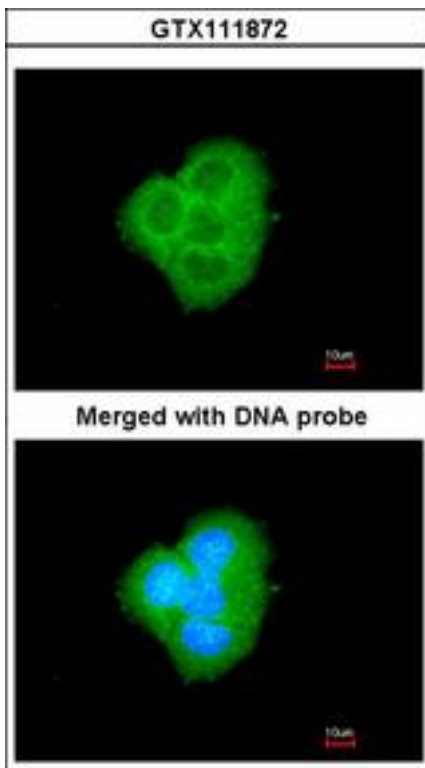
BCL2L10 / Diva Rabbit anti-Human Polyclonal (aa60-153) Antibody - LS-B10798 - LSBio	
CatalogID:	LS-B10798
Validation:	This antibody replaces catalog number LS-C186232. It has been validated for use in the following assays: IHC-P.
Target:	BCL2-like 10 (apoptosis facilitator) (BCL2L10)
Synonyms:	BCL2L10 Antibody, BCL-B Antibody, Apoptosis regulator Bcl-B Antibody, BCLB Antibody, Bcl2-L-10 Antibody, Diva not vaccine Antibody, Anti-apoptotic protein NrH Antibody, Bcl-2-like protein 10 Antibody, Boo Antibody, Boo not bladder Antibody, Diva Antibody
Family / Subfamily:	Apoptosis
Host	BCL2L10 antibody was produced in Rabbit
Clonality:	Polyclonal
Isotype:	IgG
Immunogen Species:	BCL2L10 / Diva antibody was raised against Human
Antigen Type:	Synthetic peptide
Immunogen:	BCL2L10 / Diva antibody was raised against synthetic peptide corresponding to a region within amino acids 60 and 153 of BCL2L10 (SwissProt Q9HD36).
Specificity:	Human BCL-B / Diva
Epitope:	aa60-153
Reactivity:	Human
Purification:	Immunoaffinity purified
Presentation:	0.1 M Tris-glycine, pH 7.0, 10% glycerol, 0.01% Thimerosal
Recommended Storage:	Keep as concentrated solution. Aliquot and store at -20°C or below. Avoid multiple freeze-thaw cycles.
Usage Summary:	IHC-paraffin: Suggested antigen retrieval using heat mediated 10 mM Citrate buffer (pH 6.0) or Tris-EDTA buffer (pH 8.0).
Uses:	IHC - Paraffin (7.5 µg/ml), ICC (1:100 - 1:1000), Western blot (1:500 - 1:3000) (Optimal dilution to be determined by the researcher)
Size:	50 µl
Concentration:	1 mg/ml

Immunohistochemistry Image:



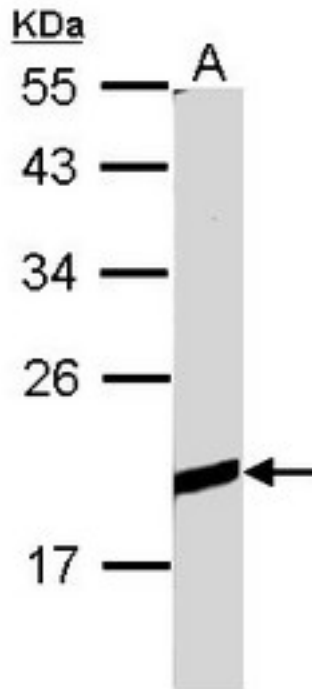
Human Tonsil: Formalin-Fixed, Paraffin-Embedded (FFPE)

Immunocytochemistry Image:



Immunofluorescence of paraformaldehyde-fixed A431 using BCL2L10 antibody at 1:200 dilution.

Western Blot Image:



Sample (30 ug of whole cell lysate). A: Raji. 12% SDS PAGE. BCL-B / Diva antibody diluted at 1:1000.

Requested From:

Japan

Laboratory Reagent For In Vitro Research Use Only

Not for resale without prior written consent from LifeSpan BioSciences, Inc.

Created on 9/23/2014

© 2014 LifeSpan BioSciences