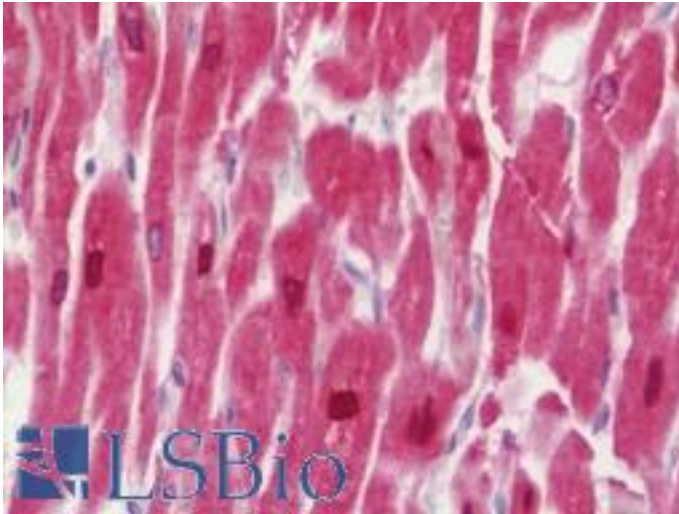


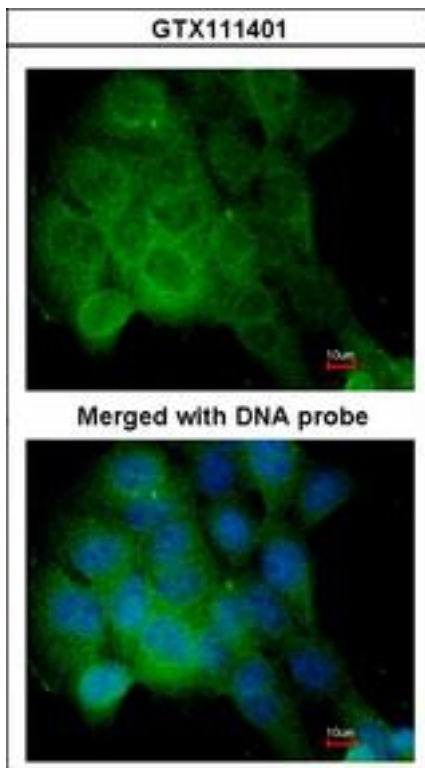
| CAMK2D / CaMKII Delta Rabbit anti-Human Polyclonal (aa249-445) Antibody - LS-B10795 - LSBio | |
|---|--|
| CatalogID: | LS-B10795 |
| Validation: | This antibody replaces catalog number LS-C186208. It has been validated for use in the following assays: IHC-P. |
| Target: | calcium/calmodulin-dependent protein kinase II delta (CAMK2D) |
| Synonyms: | CAMK2D Antibody, CaM kinase II delta Antibody, CaM kinase II delta subunit Antibody, CaM kinase II subunit delta Antibody, CaM-kinase II delta chain Antibody, CaMK-II delta subunit Antibody, CaMKIIdelta Antibody, CaMK II delta Antibody, CAMKD Antibody, CaMK-II subunit delta Antibody, CaMKII delta Antibody, Delta CaMK-II Antibody |
| Family / Subfamily: | Protein Kinase / CAMK2 |
| Host | CAMK2D antibody was produced in Rabbit |
| Clonality: | Polyclonal |
| Immunogen Species: | CAMK2D / CaMKII Delta antibody was raised against Human |
| Antigen Type: | Recombinant protein |
| Immunogen: | CAMK2D / CaMKII Delta antibody was raised against recombinant protein fragment contain a sequence corresponding to a region within amino acids 249 and 445 (Q13557) of CaMKII delta. Percent identity by BLAST analysis: Human, Pig (100%); Chicken (98%); Xenopus (94%). |
| Specificity: | Human CaMKII Delta / CAMK2D |
| Epitope: | aa249-445 |
| Reactivity: | Human, Mouse, Rat, Pig, Rabbit |
| Purification: | Immunoaffinity purified |
| Presentation: | 0.1 M Tris-glycine, pH 7.0, 10% glycerol, 0.01% Thimerosal |
| Recommended Storage: | Keep as concentrated solution. Aliquot and store at -20°C or below. Avoid multiple freeze-thaw cycles. |
| Uses: | IHC - Paraffin (7.5 µg/ml), ICC (1:100 - 1:1000), Western blot (1:1000 - 1:10000) (Optimal dilution to be determined by the researcher) |
| Size: | 50 µl |
| Concentration: | 0.97 mg/ml |

Immunohistochemistry Image:



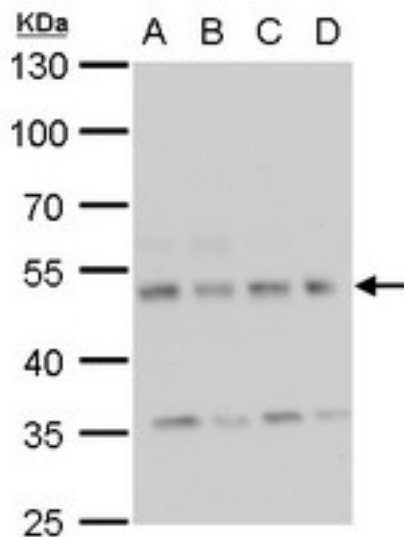
Human Heart: Formalin-Fixed, Paraffin-Embedded (FFPE)

Immunocytochemistry Image:



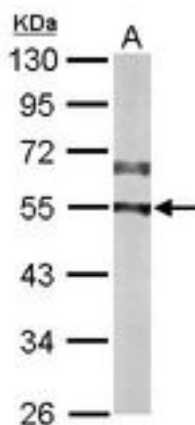
Immunofluorescence of paraformaldehyde-fixed A431 using CaMKII delta antibody at 1:200 dilution.

Western Blot Image:



Sample (30 ug of whole cell lysate). A: 293T, B: A431, C: HeLa, D: HepG2. 10% SDS PAGE. CaMKII Delta / CAMK2D antibody diluted at 1:1000.

Western Blot Image:



Sample (50 ug of whole cell lysate). A: Mouse brain. 10% SDS PAGE. CaMKII Delta / CAMK2D antibody diluted at 1:10000.

Requested From:

Japan

Laboratory Reagent For In Vitro Research Use Only

Not for resale without prior written consent from LifeSpan BioSciences, Inc.

Created on 9/23/2014

© 2014 LifeSpan BioSciences