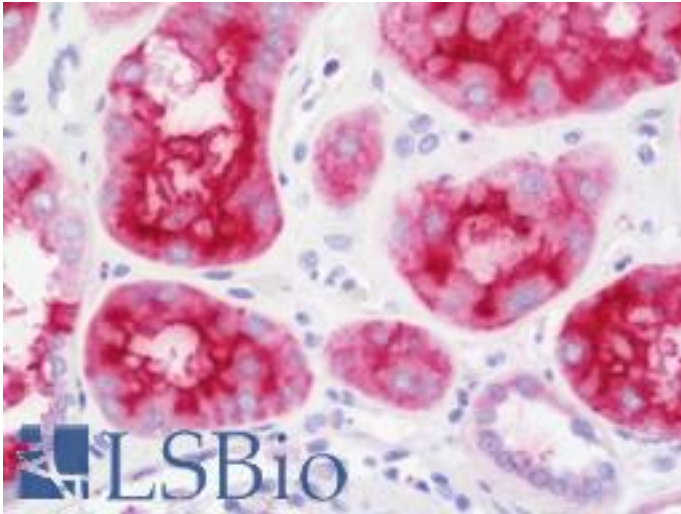


| XPNPEP2 Rabbit anti-Human Polyclonal (aa198-476) Antibody - LS-B10791 - LSBio | |
|---|--|
| CatalogID: | LS-B10791 |
| Validation: | This antibody replaces catalog number LS-C186137. It has been validated for use in the following assays: IHC-P. |
| Target: | X-prolyl aminopeptidase (aminopeptidase P) 2, membrane-bound (XPNPEP2) |
| Synonyms: | XPNPEP2 Antibody, APP2 Antibody, MAmP Antibody, Membrane-bound APP Antibody, X-prolyl aminopeptidase 2 Antibody, Xaa-Pro aminopeptidase 2 Antibody, X-Pro aminopeptidase 2 Antibody, Membrane-bound AmP Antibody |
| Family / Subfamily: | Protease / Metallopeptidase M24B |
| Host | XPNPEP2 antibody was produced in Rabbit |
| Clonality: | Polyclonal |
| Isotype: | IgG |
| Immunogen Species: | XPNPEP2 antibody was raised against Human |
| Antigen Type: | Recombinant protein |
| Immunogen: | XPNPEP2 antibody was raised against recombinant fragment corresponding to a region within amino acids 198 and 476 of XPNPEP2 (SwissProt O43895). |
| Specificity: | Human XPNPEP2 |
| Epitope: | aa198-476 |
| Reactivity: | Human |
| Purification: | Immunoaffinity purified |
| Presentation: | 0.1 M Tris-glycine, pH 7.0, 10% glycerol, 0.01% Thimerosal |
| Recommended Storage: | Keep as concentrated solution. Aliquot and store at -20°C or below. Avoid multiple freeze-thaw cycles. |
| Uses: | IHC - Paraffin (7.5 µg/ml) (Optimal dilution to be determined by the researcher) |
| Size: | 50 µl |
| Concentration: | 0.83 mg/ml |

Immunohistochemistry Image:



Human Kidney: Formalin-Fixed, Paraffin-Embedded (FFPE)

Requested From:

Japan

Laboratory Reagent For In Vitro Research Use Only

Not for resale without prior written consent from LifeSpan BioSciences, Inc.

Created on 9/23/2014

© 2014 LifeSpan BioSciences