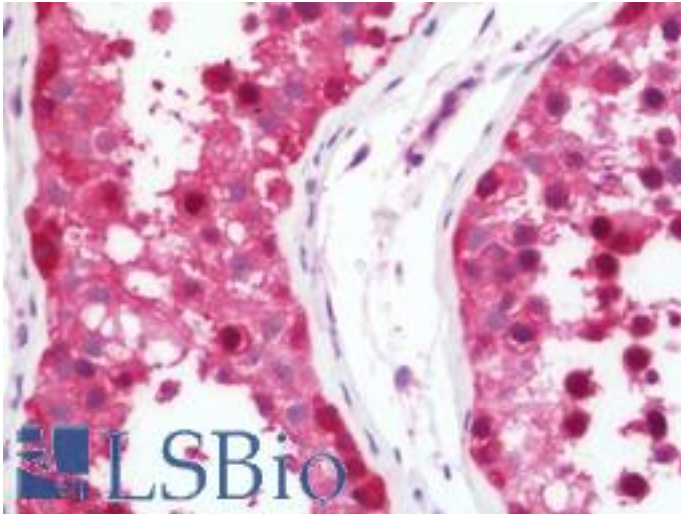


CCT5 / TCP1 Epsilon Rabbit anti-Human Polyclonal (aa89-338) Antibody - LS-B10790 - LSBio

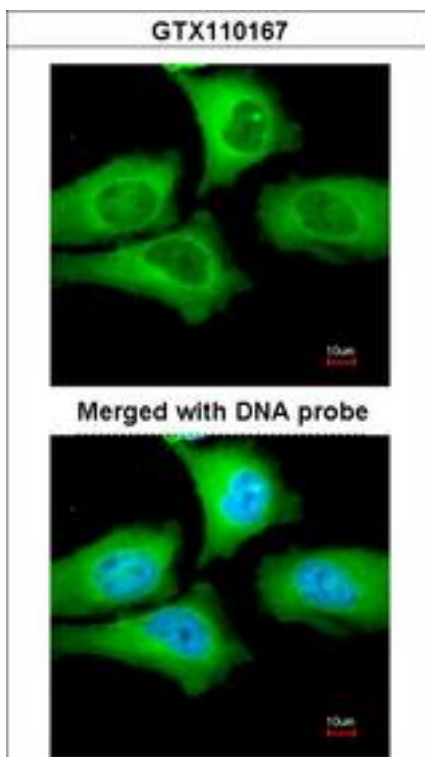
<b>CatalogID:</b>	LS-B10790
<b>Validation:</b>	This antibody replaces catalog number LS-C186136. It has been validated for use in the following assays: IHC-P.
<b>Target:</b>	chaperonin containing TCP1, subunit 5 (epsilon) (CCT5)
<b>Synonyms:</b>	CCT5 Antibody, KIAA0098 Antibody, CCT-epsilon Antibody, CCTE Antibody, TCP-1-epsilon Antibody, TCP1 Epsilon Antibody
<b>Host</b>	CCT5 antibody was produced in Rabbit
<b>Clonality:</b>	Polyclonal
<b>Isotype:</b>	IgG
<b>Immunogen Species:</b>	CCT5 / TCP1 Epsilon antibody was raised against Human
<b>Antigen Type:</b>	Recombinant protein
<b>Immunogen:</b>	CCT5 / TCP1 Epsilon antibody was raised against recombinant fragment corresponding to a region within amino acids 89 and 338 of TCP1 epsilon (SwissProt P48643). Percent identity by BLAST analysis: Human (100%); Bovine (95%); Rat (94%); Chicken (88%); Xenopus (86%); Zebrafish (84%).
<b>Specificity:</b>	Human CCT5 / TCP1 Epsilon
<b>Epitope:</b>	aa89-338
<b>Reactivity:</b>	Human, Mouse
<b>Purification:</b>	Immunoaffinity purified
<b>Presentation:</b>	0.1 M Tris-glycine, pH 7.0, 10% glycerol, 0.01% Thimerosal
<b>Recommended Storage:</b>	Keep as concentrated solution. Aliquot and store at -20°C or below. Avoid multiple freeze-thaw cycles.
<b>Usage Summary:</b>	IHC-paraffin: Suggested antigen retrieval using heat mediated 10 mM Citrate buffer (pH 6.0) or Tris-EDTA buffer (pH 8.0).
<b>Uses:</b>	IHC - Paraffin (7.5 µg/ml), ICC (1:100 - 1:1000), Western blot (1:1000 - 1:10000) (Optimal dilution to be determined by the researcher)
<b>Size:</b>	50 µl
<b>Concentration:</b>	1 mg/ml

**Immunohistochemistry Image:**



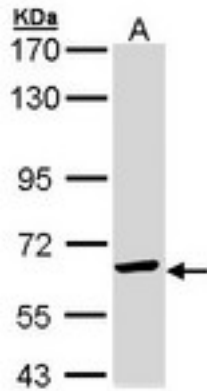
Human Testis: Formalin-Fixed, Paraffin-Embedded (FFPE)

**Immunocytochemistry Image:**



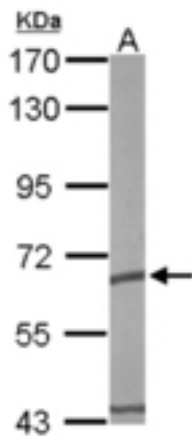
Immunofluorescence of paraformaldehyde-fixed HeLa using TCP-1 epsilon antibody at 1:200 dilution.

**Western Blot Image:**



Sample (30 ug of whole cell lysate). A: Molt-4 . 7.5% SDS PAGE. CCT5 / TCP1 Epsilon antibody diluted at 1:1000

**Western Blot Image:**



Sample (50 ug of whole cell lysate). A: mouse brain. 7.5% SDS PAGE. CCT5 / TCP1 Epsilon antibody diluted at 1:10000.

**Requested From:**

Japan

Laboratory Reagent For In Vitro Research Use Only

Not for resale without prior written consent from LifeSpan BioSciences, Inc.

Created on 9/23/2014

© 2014 LifeSpan BioSciences