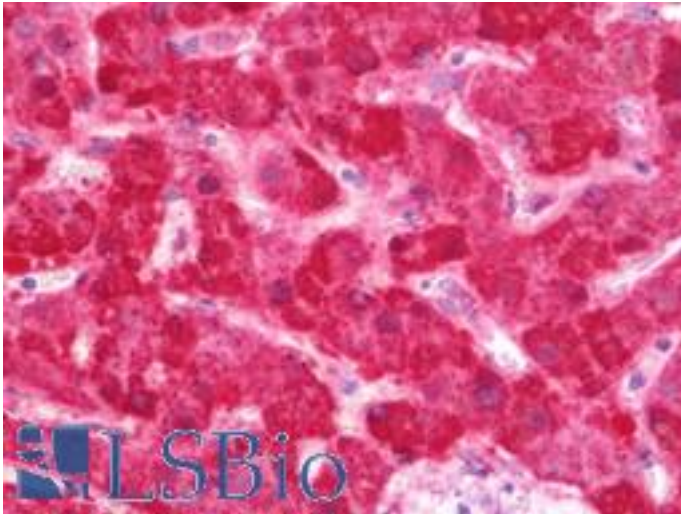


FH / Fumarase / MCL Rabbit anti-Human Polyclonal (aa89-365) Antibody - LS-B10789 - LSBio

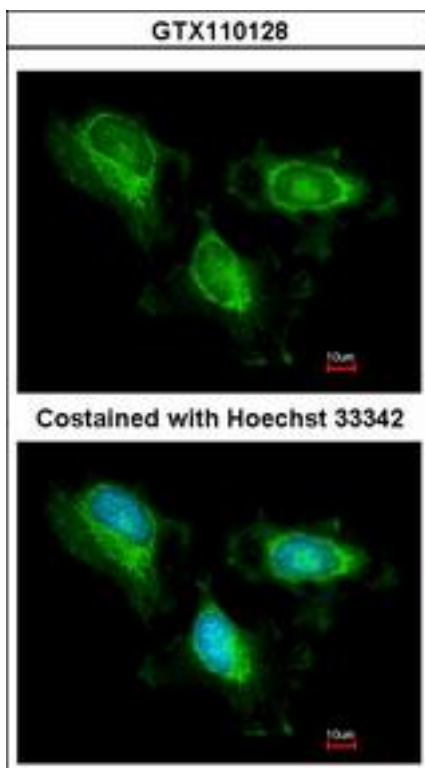
CatalogID:	LS-B10789
Validation:	This antibody replaces catalog number LS-C186134. It has been validated for use in the following assays: IHC-P.
Target:	fumarate hydratase (FH)
Synonyms:	FH Antibody, Fumarase Antibody, Fumarate hydratase Antibody, MCUL1 Antibody, HLRCC Antibody, LRCC Antibody, MCL Antibody
Host	FH antibody was produced in Rabbit
Clonality:	Polyclonal
Isotype:	IgG
Immunogen Species:	FH / Fumarase / MCL antibody was raised against Human
Antigen Type:	Recombinant protein
Immunogen:	FH / Fumarase / MCL antibody was raised against recombinant fragment corresponding to a region within amino acids 89 and 365 of Fumarate hydratase (SwissProt P07954).
Specificity:	Human FH / Fumarase
Epitope:	aa89-365
Reactivity:	Human, Mouse, Rat
Purification:	Immunoaffinity purified
Presentation:	0.1 M Tris-glycine, pH 7.0, 10% glycerol, 0.01% Thimerosal
Recommended Storage:	Keep as concentrated solution. Aliquot and store at -20°C or below. Avoid multiple freeze-thaw cycles.
Uses:	IHC - Paraffin (7.5 µg/ml), ICC (1:100 - 1:1000), Western blot (1:1000 - 1:10000) (Optimal dilution to be determined by the researcher)
Size:	50 µl
Concentration:	1 mg/ml

Immunohistochemistry Image:



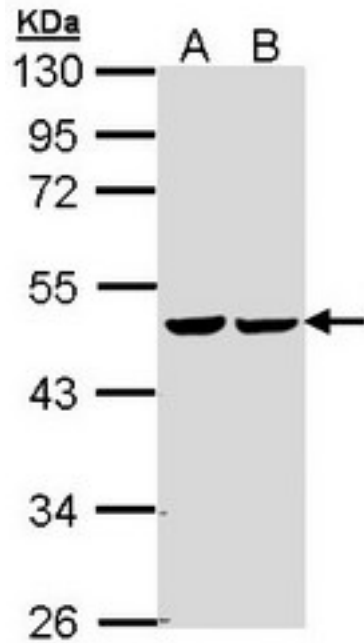
Human Liver: Formalin-Fixed, Paraffin-Embedded (FFPE)

Immunocytochemistry Image:



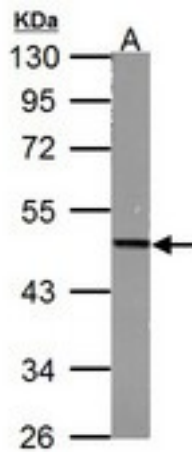
Immunofluorescence of methanol-fixed HeLa using Fumarate hydratase antibody at 1:200 dilution.

Western Blot Image:



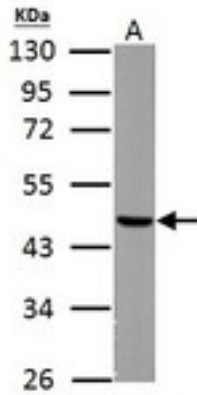
Sample (30 ug of whole cell lysate). A:293T, B: A431 . 10% SDS PAGE. FH / Fumarase antibody diluted at 1:5000

Western Blot Image:



Fumarate hydratase antibody [N2C2], Internal detects FH protein by Western blot analysis. A. 50 ug mouse liver lysate/extract. 10% SDS-PAGE. Fumarate hydratase antibody [N2C2], Internal dilution:1:1000.

Western Blot Image:



Fumarate hydratase antibody [N2C2], Internal detects Fumarate hydratase protein by Western blot analysis. A.50 ug rat liver lysate/extract. 10 % SDS-PAGE. Fumarate hydratase antibody [N2C2], Internal dilution:1:5000

Requested From:

Japan

Laboratory Reagent For In Vitro Research Use Only

Not for resale without prior written consent from LifeSpan BioSciences, Inc.

Created on 9/23/2014

© 2014 LifeSpan BioSciences