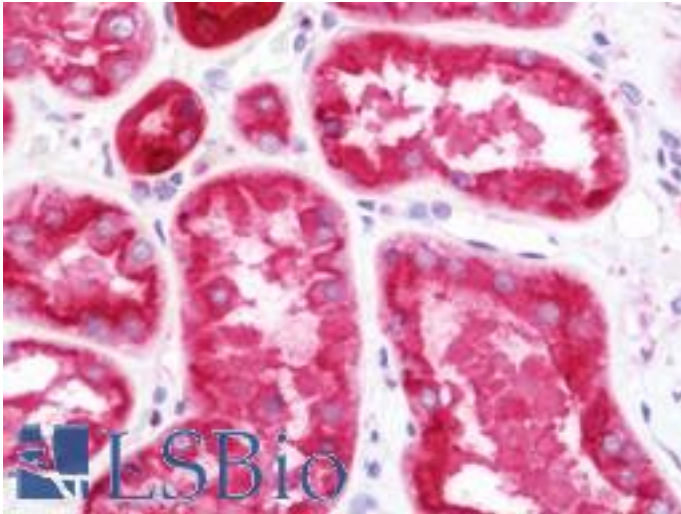


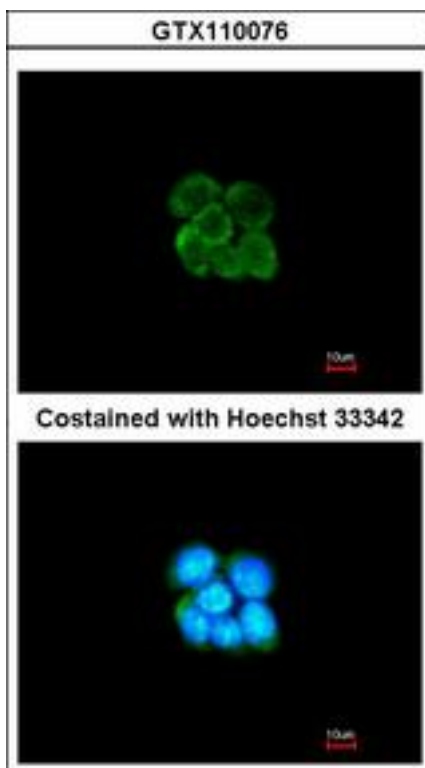
SERPINF2 / Alpha-2-Antiplasmin Rabbit anti-Human Polyclonal (aa188-453) Antibody - LS-B10788 - LSBio	
<b>CatalogID:</b>	LS-B10788
<b>Validation:</b>	This antibody replaces catalog number LS-C186128. It has been validated for use in the following assays: IHC-P.
<b>Target:</b>	serpin peptidase inhibitor, clade F (alpha-2 antiplasmin, pigment epithelium derived factor), member 2 (SERPINF2)
<b>Synonyms:</b>	SERPINF2 Antibody, AAP Antibody, Alpha-2-plasmin inhibitor Antibody, Alpha-2-AP Antibody, Alpha-2-antiplasmin Antibody, A2AP Antibody, ALPHA-2-PI Antibody, Serpin F2 Antibody, PLI Antibody, API Antibody
<b>Host</b>	SERPINF2 antibody was produced in Rabbit
<b>Clonality:</b>	Polyclonal
<b>Immunogen Species:</b>	SERPINF2 / Alpha-2-Antiplasmin antibody was raised against Human
<b>Antigen Type:</b>	Recombinant protein
<b>Immunogen:</b>	SERPINF2 / Alpha-2-Antiplasmin antibody was raised against recombinant fragment corresponding to a region within amino acids 188 and 453 of alpha 2 Antiplasmin (SwissProt P08697). Percent identity by BLAST analysis: Human (100%); Rabbit (86%); Bovine (83%).
<b>Specificity:</b>	Human SERPINF2 / Alpha-2-Antiplasmin
<b>Epitope:</b>	aa188-453
<b>Reactivity:</b>	Human, Mouse
<b>Purification:</b>	Immunoaffinity purified
<b>Presentation:</b>	0.1 M Tris-glycine, pH 7.0, 10% glycerol, 0.01% Thimerosal
<b>Recommended Storage:</b>	Keep as concentrated solution. Aliquot and store at -20°C or below. Avoid multiple freeze-thaw cycles.
<b>Usage Summary:</b>	IHC-paraffin: Suggested antigen retrieval using heat mediated 10 mM Citrate buffer (pH 6.0) or Tris-EDTA buffer (pH 8.0).
<b>Uses:</b>	IHC - Paraffin (7.5 µg/ml), ICC (1:100 - 1:1000), Western blot (1:500 - 1:3000) (Optimal dilution to be determined by the researcher)
<b>Size:</b>	50 µl
<b>Concentration:</b>	1 mg/ml

**Immunohistochemistry Image:**



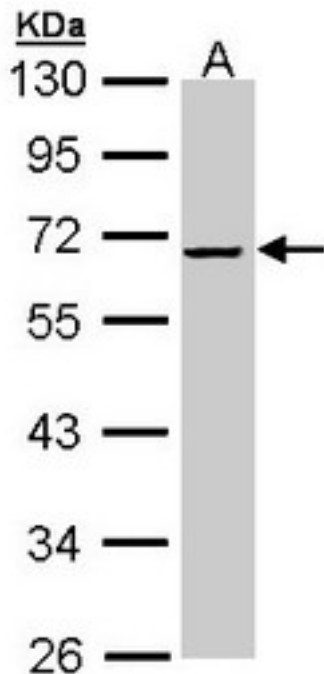
Human Kidney: Formalin-Fixed, Paraffin-Embedded (FFPE)

**Immunocytochemistry Image:**



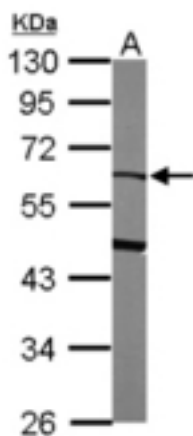
Immunofluorescence of methanol-fixed A431 using SERPINF2 antibody at 1:200 dilution.

**Western Blot Image:**



Sample (30 ug of whole cell lysate). A: HeLa. 10% SDS PAGE. SERPINF2 / Alpha-2-Antiplasmin antibody diluted at 1:1000

**Western Blot Image:**



Sample (50 ug of whole cell lysate). A: mouse liver. 10% SDS PAGE. SERPINF2 / Alpha-2-Antiplasmin antibody diluted at 1:1000.

**Requested From:**

Japan

Laboratory Reagent For In Vitro Research Use Only

Not for resale without prior written consent from LifeSpan BioSciences, Inc.

Created on 9/23/2014

© 2014 LifeSpan BioSciences