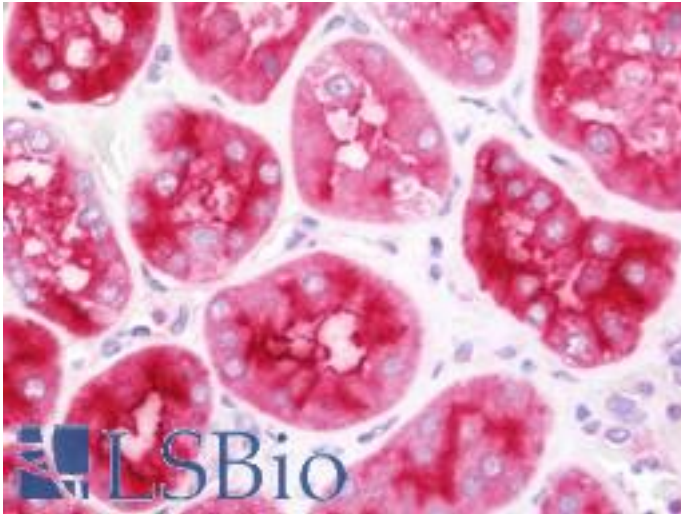


XPNPEP2 Rabbit anti-Human Polyclonal (aa286-564) Antibody - LS-B10787 - LSBio

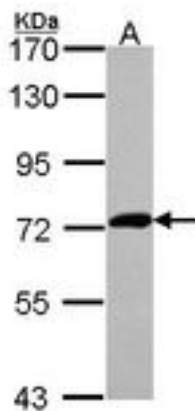
CatalogID:	LS-B10787
Validation:	This antibody replaces catalog number LS-C186121. It has been validated for use in the following assays: IHC-P.
Target:	X-prolyl aminopeptidase (aminopeptidase P) 2, membrane-bound (XPNPEP2)
Synonyms:	XPNPEP2 Antibody, APP2 Antibody, MAmP Antibody, Membrane-bound APP Antibody, X-prolyl aminopeptidase 2 Antibody, Xaa-Pro aminopeptidase 2 Antibody, X-Pro aminopeptidase 2 Antibody, Membrane-bound AmP Antibody
Family / Subfamily:	Protease / Metallopeptidase M24B
Host	XPNPEP2 antibody was produced in Rabbit
Clonality:	Polyclonal
Isotype:	IgG
Immunogen Species:	XPNPEP2 antibody was raised against Human
Antigen Type:	Recombinant protein
Immunogen:	XPNPEP2 antibody was raised against recombinant fragment corresponding to a region within amino acids 286 and 564 of XPNPEP2 (SwissProt O43895). Percent identity by BLAST analysis: Human (100%); Pig (90%); Mouse, Rat, Bovine (89%).
Specificity:	Human XPNPEP2
Epitope:	aa286-564
Reactivity:	Human
Purification:	Immunoaffinity purified
Presentation:	0.1 M Tris-glycine, pH 7.0, 10% glycerol, 0.01% Thimerosal
Recommended Storage:	Keep as concentrated solution. Aliquot and store at -20°C or below. Avoid multiple freeze-thaw cycles.
Uses:	IHC - Paraffin (7.5 µg/ml), Western blot (1:500 - 1:3000) (Optimal dilution to be determined by the researcher)
Size:	50 µl
Concentration:	1 mg/ml

Immunohistochemistry Image:



Human Kidney: Formalin-Fixed, Paraffin-Embedded (FFPE)

Western Blot Image:



Sample (30 ug of whole cell lysate). A: Hep G2 . 7.5% SDS PAGE. XPNPEP2 antibody diluted at 1:1000.

Requested From:

Japan

Laboratory Reagent For In Vitro Research Use Only

Not for resale without prior written consent from LifeSpan BioSciences, Inc.

Created on 9/23/2014

© 2014 LifeSpan BioSciences