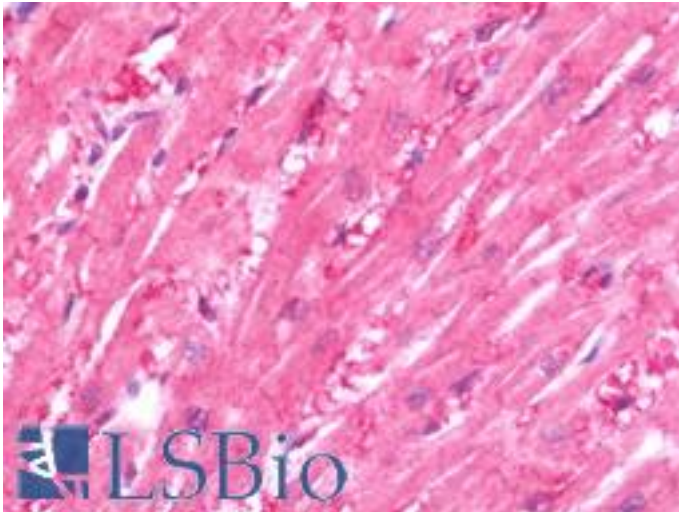


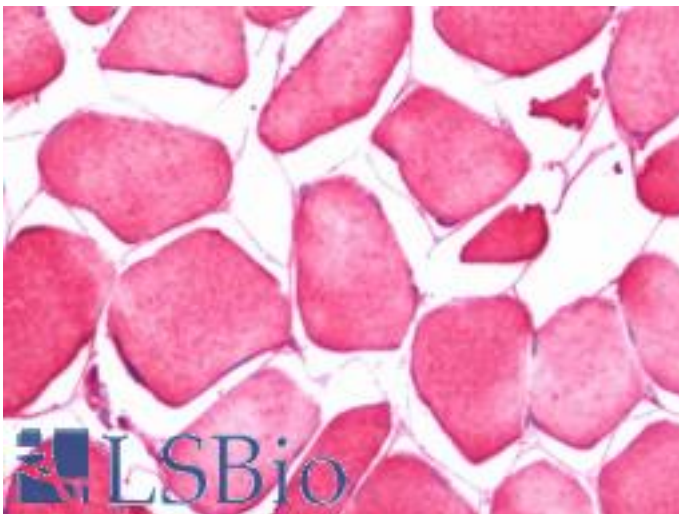
CRLF1 Rabbit anti-Human Polyclonal (aa130-415) Antibody - LS-B10786 - LSBio	
CatalogID:	LS-B10786
Validation:	This antibody replaces catalog number LS-C186116. It has been validated for use in the following assays: IHC-P.
Target:	cytokine receptor-like factor 1 (CRLF1)
Synonyms:	CRLF1 Antibody, CISS1 Antibody, Cytokine-like factor 1 Antibody, CISS Antibody, CLF Antibody, CLF-1 Antibody, NR6 Antibody, Zcytor5 Antibody, Class I cytokine receptor Antibody
Host	CRLF1 antibody was produced in Rabbit
Clonality:	Polyclonal
Isotype:	IgG
Immunogen Species:	CRLF1 antibody was raised against Human
Antigen Type:	Recombinant protein
Immunogen:	CRLF1 antibody was raised against recombinant fragment corresponding to a region within amino acids 130 and 415 of CRLF1 (SwissProt O75462). Percent identity by BLAST analysis: Human (100%); Mouse, Rat (99%).
Specificity:	Human CRLF1
Epitope:	aa130-415
Reactivity:	Human
Purification:	Immunoaffinity purified
Presentation:	0.1 M Tris-glycine, pH 7.0, 10% glycerol, 0.01% Thimerosal
Recommended Storage:	Keep as concentrated solution. Aliquot and store at -20°C or below. Avoid multiple freeze-thaw cycles.
Uses:	IHC - Paraffin (7.5 µg/ml), Western blot (1:500 - 1:3000) (Optimal dilution to be determined by the researcher)
Size:	50 µl
Concentration:	1 mg/ml

Immunohistochemistry Image:



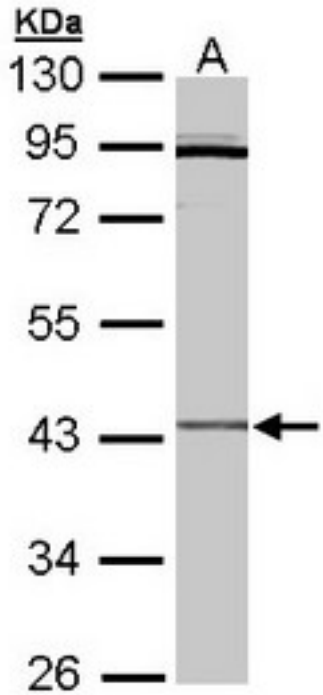
Human Heart: Formalin-Fixed, Paraffin-Embedded (FFPE)

Immunohistochemistry Image:



Human Skeletal Muscle: Formalin-Fixed, Paraffin-Embedded (FFPE)

Western Blot Image:



Sample (30 ug of whole cell lysate). A: Hep G2 . 10% SDS PAGE. CRLF1 antibody diluted at 1:3000

Requested From:

Japan

Laboratory Reagent For In Vitro Research Use Only

Not for resale without prior written consent from LifeSpan BioSciences, Inc.

Created on 9/23/2014

© 2014 LifeSpan BioSciences