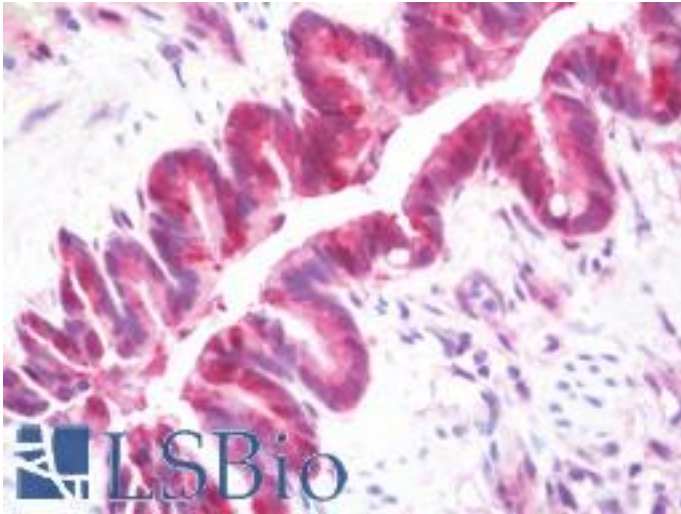


**GSTT1 Rabbit anti-Human Polyclonal (aa1-240) Antibody - LS-B10781 - LSBio**

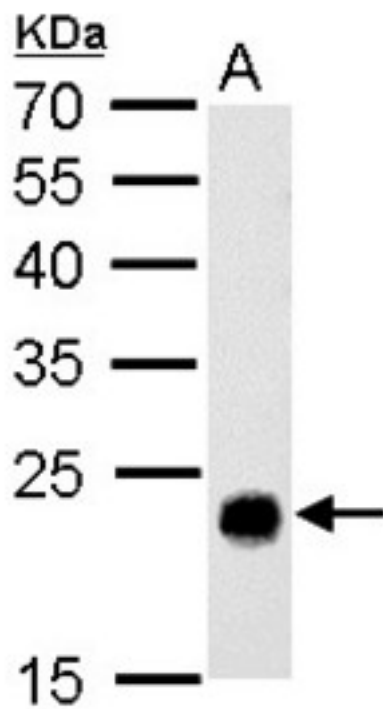
<b>CatalogID:</b>	LS-B10781
<b>Validation:</b>	This antibody replaces catalog number LS-C186057. It has been validated for use in the following assays: IHC-P.
<b>Target:</b>	glutathione S-transferase theta 1 (GSTT1)
<b>Synonyms:</b>	GSTT1 Antibody, GST class-theta-1 Antibody, Glutathione transferase T1-1 Antibody
<b>Host</b>	GSTT1 antibody was produced in Rabbit
<b>Clonality:</b>	Polyclonal
<b>Immunogen Species:</b>	GSTT1 antibody was raised against Human
<b>Antigen Type:</b>	Recombinant protein
<b>Immunogen:</b>	GSTT1 antibody was raised against recombinant fragment corresponding to a region within amino acids 1 and 240 of GSTT1 (SwissProt P30711).
<b>Specificity:</b>	Human GSTT1
<b>Epitope:</b>	aa1-240
<b>Reactivity:</b>	Human, Mouse, Rat
<b>Purification:</b>	Immunoaffinity purified
<b>Presentation:</b>	0.1 M Tris-glycine, pH 7.0, 10% glycerol, 0.01% Thimerosal
<b>Recommended Storage:</b>	Keep as concentrated solution. Aliquot and store at -20°C or below. Avoid multiple freeze-thaw cycles.
<b>Usage Summary:</b>	IHC-paraffin: Suggested antigen retrieval using heat mediated 10 mM Citrate buffer (pH 6.0) or Tris-EDTA buffer (pH 8.0).
<b>Uses:</b>	IHC - Paraffin (7.5 µg/ml), Western blot (1:500 - 1:3000) (Optimal dilution to be determined by the researcher)
<b>Size:</b>	50 µl
<b>Concentration:</b>	1 mg/ml

**Immunohistochemistry Image:**



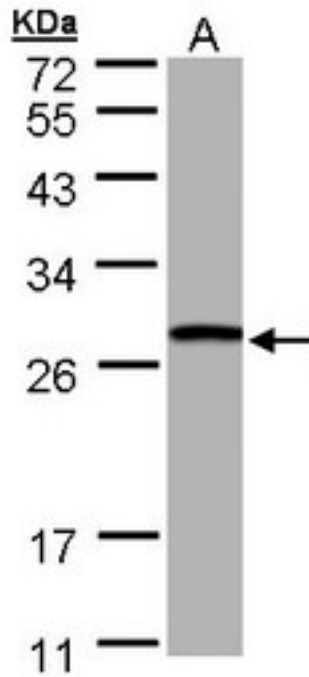
Human Lung: Formalin-Fixed, Paraffin-Embedded (FFPE)

**Western Blot Image:**



GSTT1 antibody detects GSTT1 protein by Western blot analysis. A. 50 ug rat liver lysate/extract. 12 % SDS-PAGE. GSTT1 antibody dilution:1:500

**Western Blot Image:**



Sample (30 ug of whole cell lysate). A: Hep G2 . 10% SDS PAGE. GSTT1 antibody diluted at 1:1000

**Requested From:**

Japan

Laboratory Reagent For In Vitro Research Use Only

Not for resale without prior written consent from LifeSpan BioSciences, Inc.

Created on 9/23/2014

© 2014 LifeSpan BioSciences