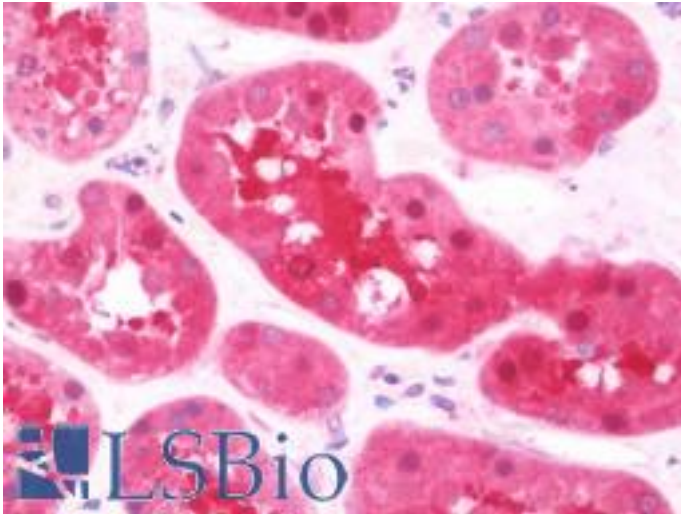


PSPH / PSP Rabbit anti-Human Polyclonal (aa1-175) Antibody - LS-B10780 - LSBio

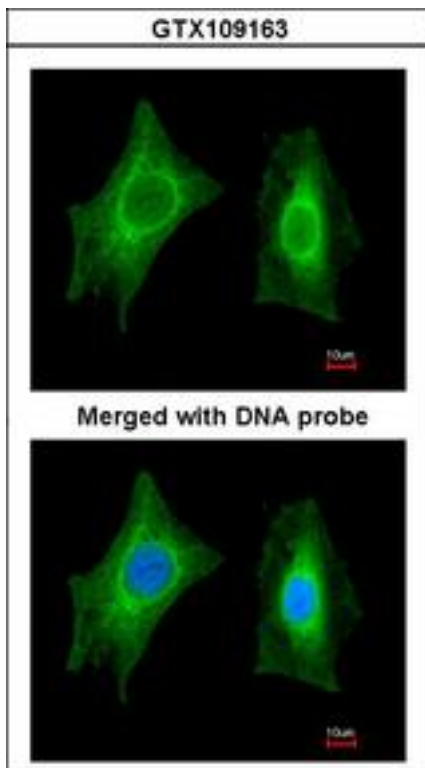
CatalogID:	LS-B10780
Validation:	This antibody replaces catalog number LS-C186050. It has been validated for use in the following assays: IHC-P.
Target:	phosphoserine phosphatase (PSPH)
Synonyms:	PSPH Antibody, L-3-phosphoserine phosphatase Antibody, Phosphoserine phosphatase Antibody, PSPase Antibody, PSP Antibody, PSPHD Antibody
Host	PSPH antibody was produced in Rabbit
Clonality:	Polyclonal
Isotype:	IgG
Immunogen Species:	PSPH / PSP antibody was raised against Human
Antigen Type:	Recombinant protein
Immunogen:	PSPH / PSP antibody was raised against recombinant protein fragment contain a sequence corresponding to a region within amino acids 1 and 175 (P78330) of PSPH. Percent identity by BLAST analysis: Human (100%); Pig (96%); Rat, Bovine (94%); Mouse (93%).
Specificity:	Human PSPH
Epitope:	aa1-175
Reactivity:	Human
Purification:	Immunoaffinity purified
Presentation:	0.1 M Tris-glycine, pH 7.0, 10% glycerol, 0.01% Thimerosal
Recommended Storage:	Keep as concentrated solution. Aliquot and store at -20°C or below. Avoid multiple freeze-thaw cycles.
Uses:	IHC - Paraffin (7.5 µg/ml), ICC (1:100 - 1:1000), Western blot (1:500 - 1:3000) (Optimal dilution to be determined by the researcher)
Size:	50 µl
Concentration:	1 mg/ml

Immunohistochemistry Image:



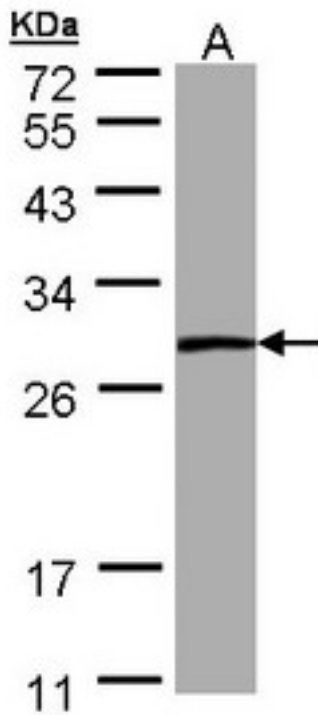
Human Kidney: Formalin-Fixed, Paraffin-Embedded (FFPE)

Immunocytochemistry Image:



Immunofluorescence of paraformaldehyde-fixed HeLa using PSPH antibody at 1:200 dilution.

Western Blot Image:



Sample (30 ug of whole cell lysate). A: A431. 12% SDS PAGE. PSPH antibody diluted at 1:1000

Requested From:

Japan

Laboratory Reagent For In Vitro Research Use Only

Not for resale without prior written consent from LifeSpan BioSciences, Inc.

Created on 9/23/2014

© 2014 LifeSpan BioSciences