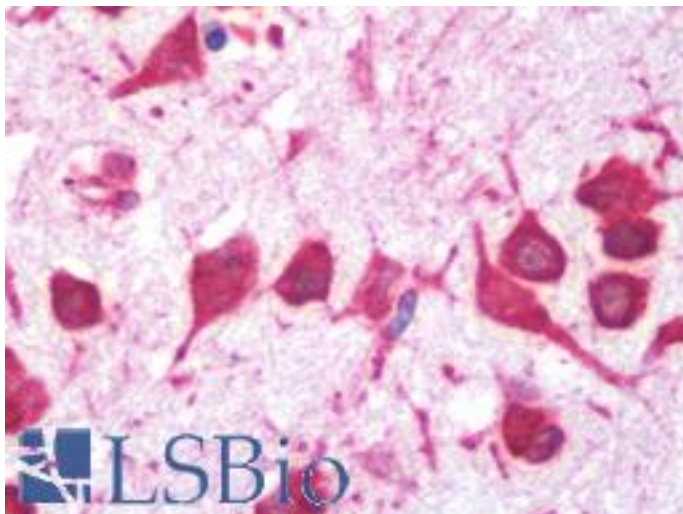


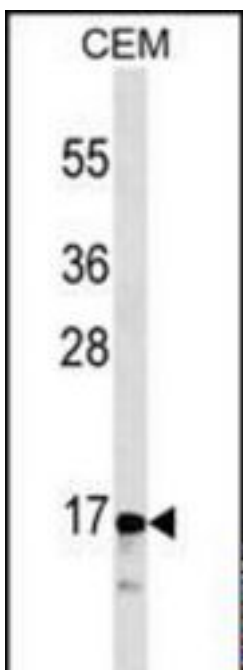
CGRP / Calcitonin Mouse anti-Human Monoclonal (406CT21.4.3) Antibody - LS-B10778 - LSBio	
CatalogID:	LS-B10778
Validation:	This antibody replaces catalog number LS-C168272. It has been validated for use in the following assays: IHC-P.
Target:	calcitonin-related polypeptide alpha (CALCA)
Synonyms:	CALCA Antibody, Alpha-type CGRP Antibody, CGRP Antibody, CGRP-I Antibody, CGRP1 Antibody, CT Antibody, Calcitonin Antibody, KC Antibody, CALC1 Antibody, Calcitonin 1 Antibody, Katalcalcin Antibody
Family / Subfamily:	Hormone / not assigned-Hormone
Host	CALCA antibody was produced in Mouse
Clonality:	Monoclonal
Isotype:	IgM
Clone Name:	406CT21.4.3
Immunogen Species:	CGRP / Calcitonin antibody was raised against Human
Antigen Type:	Synthetic peptide
Immunogen:	CGRP / Calcitonin antibody was raised against kLH conjugated synthetic peptide between 56-84 amino acids from human CALCA/CT.
Reactivity:	Human
Purification:	Euglobulin precipitation
Presentation:	PBS, 0.09% sodium azide
Recommended Storage:	Maintain refrigerated at 2-8°C for up to 6 months. For long term storage store at -20°C.
Uses:	IHC - Paraffin (1:100), Western blot (1:100 - 1:250) (Optimal dilution to be determined by the researcher)
Size:	200 µl

Immunohistochemistry Image:



Human Brain, Cortex: Formalin-Fixed, Paraffin-Embedded (FFPE)

Western Blot Image:



CALCA/CT Antibody Western blot of CEM cell line lysates (35 ug/lane). This demonstrates the CALCA/CT antibody detected the CALCA/CT protein (arrow).

Requested From:

Japan

Laboratory Reagent For In Vitro Research Use Only

Not for resale without prior written consent from LifeSpan BioSciences, Inc.

Created on 9/23/2014

© 2014 LifeSpan BioSciences