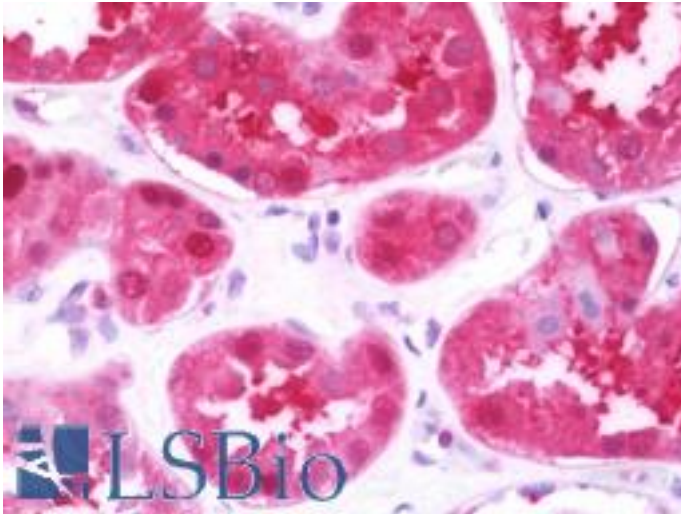


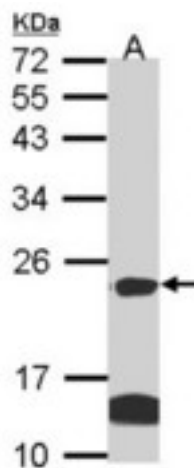
CLDN14 / Claudin 14 Rabbit anti-Human Polyclonal (aa177-239) Antibody - LS-B10775 - LSBio	
CatalogID:	LS-B10775
Validation:	This antibody replaces catalog number LS-C185651. It has been validated for use in the following assays: IHC-P.
Target:	claudin 14 (CLDN14)
Synonyms:	CLDN14 Antibody, Claudin 14 Antibody, DFNB29 Antibody, Claudin-14 Antibody
Family / Subfamily:	Claudin / not assigned-Claudin
Host	CLDN14 antibody was produced in Rabbit
Clonality:	Polyclonal
Isotype:	IgG
Immunogen Species:	CLDN14 / Claudin 14 antibody was raised against Human
Antigen Type:	Synthetic peptide
Immunogen:	CLDN14 / Claudin 14 antibody was raised against synthetic peptide corresponding to a region within amino acids 177 and 239 of Claudin 14 (SwissProt O95500). Percent identity by BLAST analysis: Human, Monkey (100%).
Specificity:	Human Claudin 14
Epitope:	aa177-239
Reactivity:	Human, Monkey
Purification:	Immunoaffinity purified
Presentation:	PBS, pH 7.0, 40% glycerol, 0.01% Thimerosal
Recommended Storage:	Keep as concentrated solution. Aliquot and store at -20°C or below. Avoid multiple freeze-thaw cycles.
Uses:	IHC - Paraffin (7.5 µg/ml), Western blot (1:500 - 1:3000) (Optimal dilution to be determined by the researcher)
Size:	50 µl
Concentration:	1 mg/ml

Immunohistochemistry Image:



Human Kidney: Formalin-Fixed, Paraffin-Embedded (FFPE)

Western Blot Image:



Sample (30 ug of whole cell lysate). A: HeLa, B: Hep G2 . 12% SDS PAGE. Claudin 14 antibody diluted at 1:1000.

Requested From:

Japan

Laboratory Reagent For In Vitro Research Use Only

Not for resale without prior written consent from LifeSpan BioSciences, Inc.

Created on 9/23/2014

© 2014 LifeSpan BioSciences