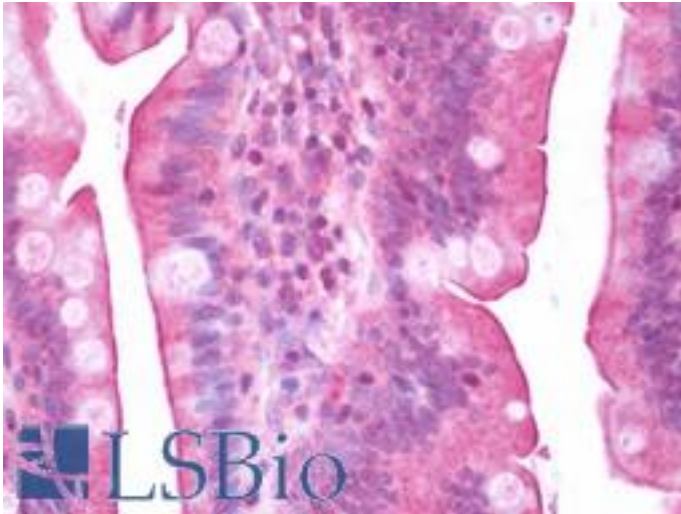


ENTPD3 Rabbit anti-Human Polyclonal (aa200-459) Antibody - LS-B10770 - LSBio

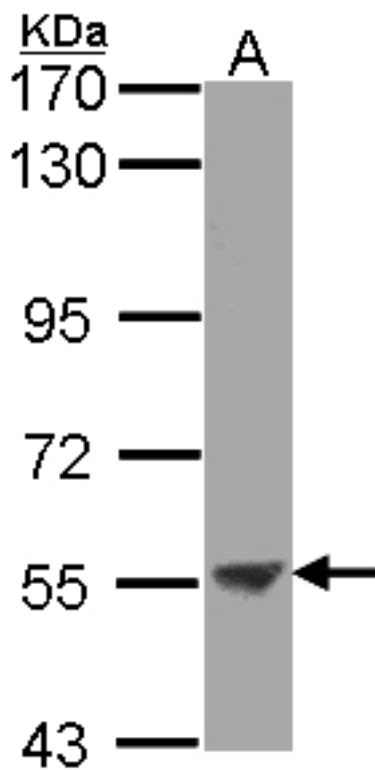
CatalogID:	LS-B10770
Validation:	This antibody replaces catalog number LS-C185615. It has been validated for use in the following assays: IHC-P.
Target:	ectonucleoside triphosphate diphosphohydrolase 3 (ENTPD3)
Synonyms:	ENTPD3 Antibody, CD39 antigen-like 3 Antibody, CD39-like 3 Antibody, Ecto-ATP diphosphohydrolase 3 Antibody, Ecto-ATPDase 3 Antibody, Ecto-ATPase 3 Antibody, Ecto-apyrase 3 Antibody, NTPDase 3 Antibody, CD39L3 Antibody, HB6 Antibody, NTPDase-3 Antibody
Host	ENTPD3 antibody was produced in Rabbit
Clonality:	Polyclonal
Immunogen Species:	ENTPD3 antibody was raised against Human
Antigen Type:	Recombinant protein
Immunogen:	ENTPD3 antibody was raised against recombinant fragment corresponding to a region within amino acids 200 and 459 of ENTPD3 (SwissProt O75355).
Specificity:	Human ENTPD3
Epitope:	aa200-459
Reactivity:	Human
Purification:	Immunoaffinity purified
Presentation:	0.1 M Tris-glycine, pH 7.0, 10% glycerol, 0.01% Thimerosal
Recommended Storage:	Keep as concentrated solution. Aliquot and store at -20°C or below. Avoid multiple freeze-thaw cycles.
Usage Summary:	IHC-paraffin: Suggested antigen retrieval using heat mediated 10 mM Citrate buffer (pH 6.0) or Tris-EDTA buffer (pH 8.0).
Uses:	IHC - Paraffin (7.5 µg/ml), Western blot (1:500 - 1:3000) (Optimal dilution to be determined by the researcher)
Size:	100 µl
Concentration:	0.41 mg/ml

Immunohistochemistry Image:



Human Small Intestine: Formalin-Fixed, Paraffin-Embedded (FFPE)

Western Blot Image:



Sample (30 ug of whole cell lysate). A: Molt-4 . 7.5% SDS PAGE. ENTPD3 antibody diluted at 1:2000.

Requested From:

Japan

Laboratory Reagent For In Vitro Research Use Only

Not for resale without prior written consent from LifeSpan BioSciences, Inc.

Created on 9/23/2014

© 2014 LifeSpan BioSciences