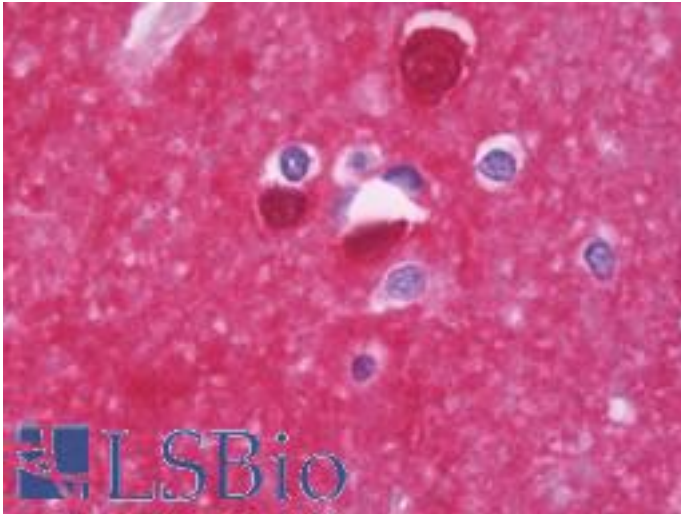


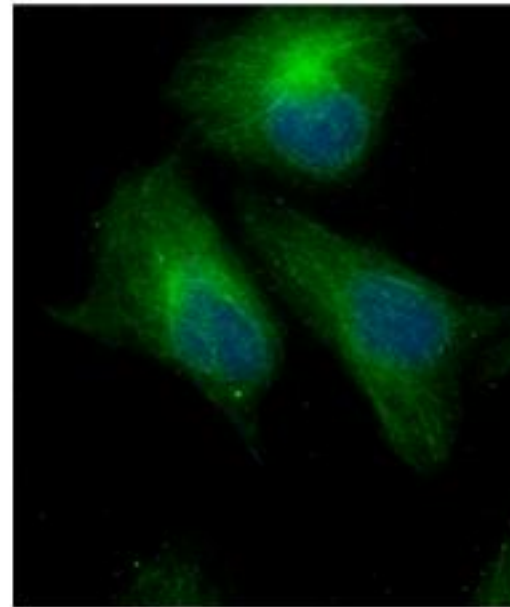
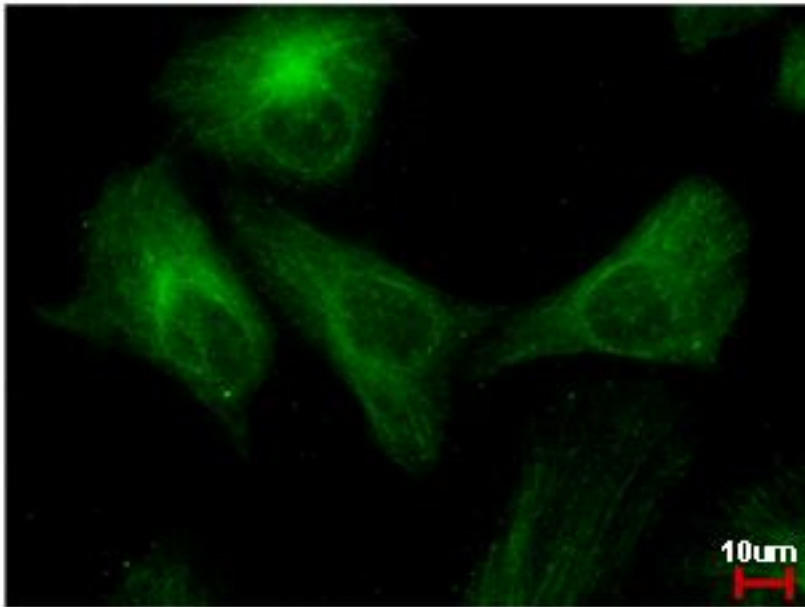
PPP3CB Rabbit anti-Human Polyclonal (aa63-393) Antibody - LS-B10767 - LSBio	
CatalogID:	LS-B10767
Validation:	This antibody replaces catalog number LS-C185591. It has been validated for use in the following assays: IHC-P.
Target:	protein phosphatase 3, catalytic subunit, beta isozyme (PPP3CB)
Synonyms:	PPP3CB Antibody, Calcineurin A2 Antibody, CALNB Antibody, CALNA2 Antibody, CNA2 Antibody, Calcineurin A beta Antibody, Cna beta Antibody, PP2Bbeta Antibody, Calcineurin b Antibody, CAM-PRP catalytic subunit Antibody, Phosphatase 2b beta Antibody, pp2b-beta Antibody
Family / Subfamily:	Protein Phosphatase / PP2B
Host	PPP3CB antibody was produced in Rabbit
Clonality:	Polyclonal
Immunogen Species:	PPP3CB antibody was raised against Human
Antigen Type:	Recombinant protein
Immunogen:	PPP3CB antibody was raised against recombinant fragment corresponding to a region within amino acids 63 and 393 of PPP3CB (SwissProt P16298).
Specificity:	Human PPP3CB
Epitope:	aa63-393
Reactivity:	Human
Purification:	Immunoaffinity purified
Presentation:	0.1 M Tris-glycine, pH 7.0, 10% glycerol, 0.01% Thimerosal
Recommended Storage:	Keep as concentrated solution. Aliquot and store at -20°C or below. Avoid multiple freeze-thaw cycles.
Usage Summary:	IHC-paraffin: Suggested antigen retrieval using heat mediated 10 mM Citrate buffer (pH 6.0) or Tris-EDTA buffer (pH 8.0).
Uses:	IHC - Paraffin (7.5 µg/ml), ICC (1:100 - 1:1000), Western blot (1:500 - 1:3000) (Optimal dilution to be determined by the researcher)
Size:	100 µl
Concentration:	0.49 mg/ml

Immunohistochemistry Image:



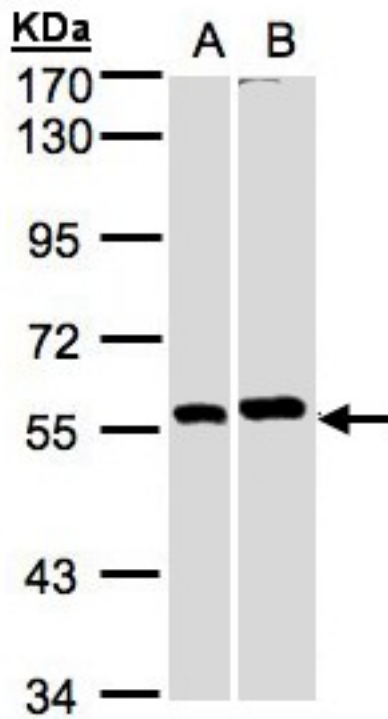
Human Brain, Cortex: Formalin-Fixed, Paraffin-Embedded (FFPE)

Immunocytochemistry Image:



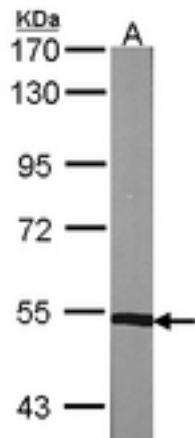
PPP3CB antibody detects PPP3CB protein at cytoplasm by immunofluorescent analysis. HeLa cells were fixed in ice-cold MeOH for 5 min. PPP3CB protein stained by PPP3CB antibody diluted at 1:500.

Western Blot Image:



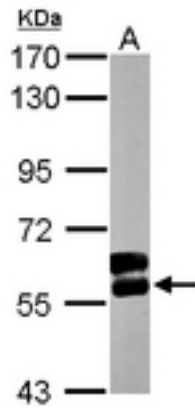
Sample (30 ug whole cell lysate). A: A431, B: MOLT4 . 7.5% SDS PAGE. PPP3CB antibody diluted at 1:1000

Western Blot Image:



Sample (30 ug of whole cell lysate). A: NIH-3T3. 7.5% SDS PAGE. PPP3CB antibody diluted at 1:1000.

Western Blot Image:



Sample (50 ug of whole cell lysate). A: Mouse brain. 7.5% SDS PAGE. PPP3CB antibody diluted at 1:1000.

Requested From:

Japan

Laboratory Reagent For In Vitro Research Use Only

Not for resale without prior written consent from LifeSpan BioSciences, Inc.

Created on 9/23/2014

© 2014 LifeSpan BioSciences