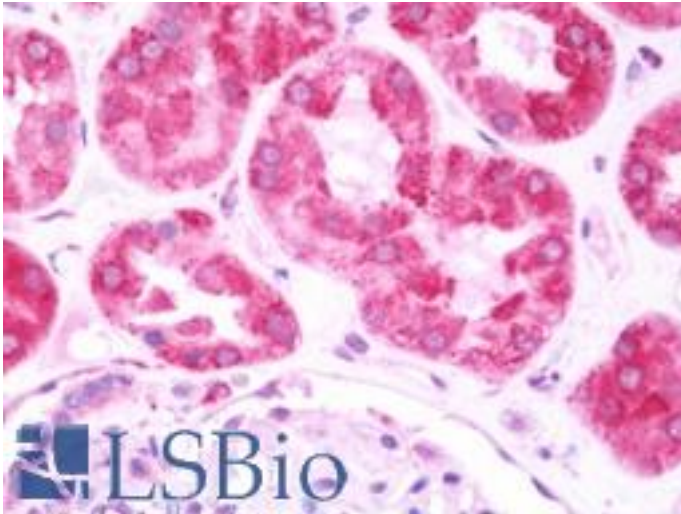


**LRPAP1 Rabbit anti-Human Polyclonal Antibody - LS-B10766 - LSBio**

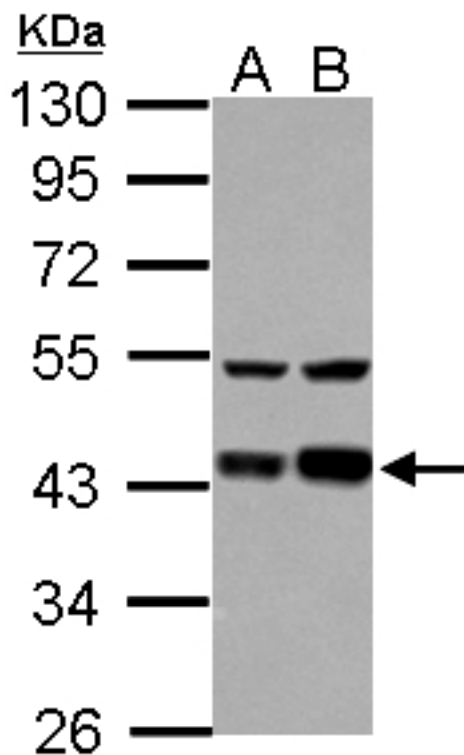
<b>CatalogID:</b>	LS-B10766
<b>Validation:</b>	This antibody replaces catalog number LS-C155227. It has been validated for use in the following assays: IHC-P.
<b>Target:</b>	low density lipoprotein receptor-related protein associated protein 1 (LRPAP1)
<b>Synonyms:</b>	LRPAP1 Antibody, A2MRAP Antibody, Alpha-2-MRAP Antibody, A2RAP Antibody, HBP44 Antibody, RAP Antibody
<b>Host</b>	LRPAP1 antibody was produced in Rabbit
<b>Clonality:</b>	Polyclonal
<b>Isotype:</b>	IgG
<b>Immunogen Species:</b>	LRPAP1 antibody was raised against Human
<b>Antigen Type:</b>	Recombinant protein
<b>Immunogen:</b>	LRPAP1 antibody was raised against recombinant fragment corresponding to a region within amino acids 31 and 325 of RAP (SwissProt P30533). Percent identity by BLAST analysis:
<b>Specificity:</b>	Human LRPAP1
<b>Reactivity:</b>	Human
<b>Purification:</b>	Immunoaffinity purified
<b>Presentation:</b>	PBS, pH 7, 1% BSA, 20% Glycerol, 0.01% Thimerosal
<b>Recommended Storage:</b>	Aliquot and freeze at -20° C. Avoid freeze-thaw cycles.
<b>Usage Summary:</b>	Suggested starting dilutions are as follows: Western blot: 1:500-1:3000. IHC-Paraffin: 7.5 µg/ml. Not yet tested in other applications. Optimal working dilutions should be determined experimentally by the end user.
<b>Uses:</b>	IHC - Paraffin (7.5 µg/ml), Western blot (1:500 - 1:3000) (Optimal dilution to be determined by the researcher)
<b>Size:</b>	50 µl
<b>Concentration:</b>	1 mg/ml

**Immunohistochemistry Image:**



Human Kidney: Formalin-Fixed, Paraffin-Embedded (FFPE)

**Western Blot Image:**



Sample (30 ug of whole cell lysate) A: HeLa B: HepG2 10% SDS PAGE LRPAP1 antibody diluted at 1:1000

**Requested From:**

Japan

Laboratory Reagent For In Vitro Research Use Only

Not for resale without prior written consent from LifeSpan BioSciences, Inc.

Created on 9/23/2014

© 2014 LifeSpan BioSciences