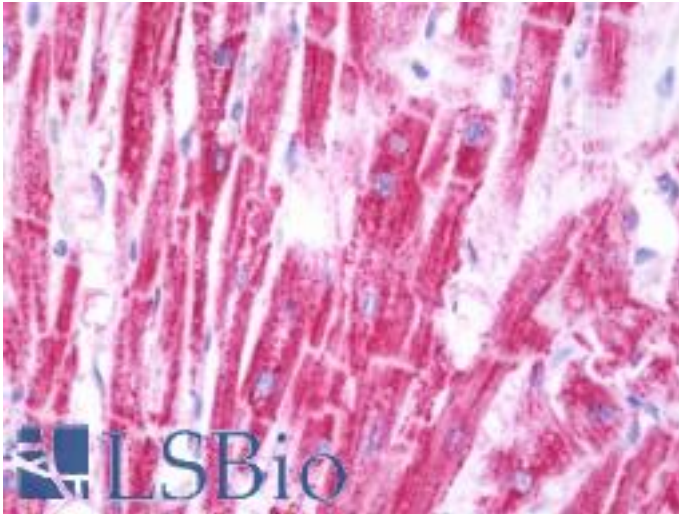


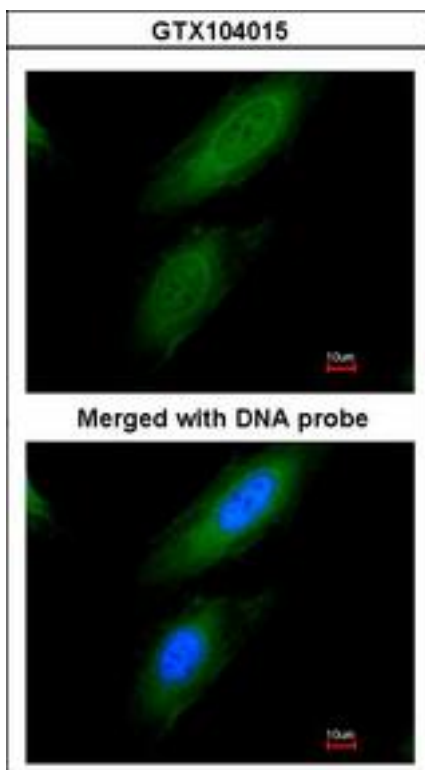
PDHA1 / PDH E1 Alpha Rabbit anti-Human Polyclonal (aa39-325) Antibody - LS-B10765 - LSBio	
<b>CatalogID:</b>	LS-B10765
<b>Validation:</b>	This antibody replaces catalog number LS-C185583. It has been validated for use in the following assays: IHC-P.
<b>Target:</b>	pyruvate dehydrogenase (lipoamide) alpha 1 (PDHA1)
<b>Synonyms:</b>	PDHA1 Antibody, PDHCE1A Antibody, PDHA Antibody, PHE1A Antibody, PDHE1-A type I Antibody
<b>Host</b>	PDHA1 antibody was produced in Rabbit
<b>Clonality:</b>	Polyclonal
<b>Immunogen Species:</b>	PDHA1 / PDH E1 Alpha antibody was raised against Human
<b>Antigen Type:</b>	Recombinant protein
<b>Immunogen:</b>	PDHA1 / PDH E1 Alpha antibody was raised against recombinant fragment corresponding to a region within amino acids 39 and 325 of (SwissProt P08559).
<b>Specificity:</b>	Human PDHA1
<b>Epitope:</b>	aa39-325
<b>Reactivity:</b>	Human
<b>Purification:</b>	Immunoaffinity purified
<b>Presentation:</b>	0.1 M Tris-glycine, pH 7.0, 10% glycerol, 0.01% Thimerosal
<b>Recommended Storage:</b>	Keep as concentrated solution. Aliquot and store at -20°C or below. Avoid multiple freeze-thaw cycles.
<b>Uses:</b>	IHC - Paraffin (7.5 µg/ml), ICC (1:100 - 1:1000), Western blot (1:1000 - 1:10000) (Optimal dilution to be determined by the researcher)
<b>Size:</b>	50 µl
<b>Concentration:</b>	1 mg/ml

**Immunohistochemistry Image:**



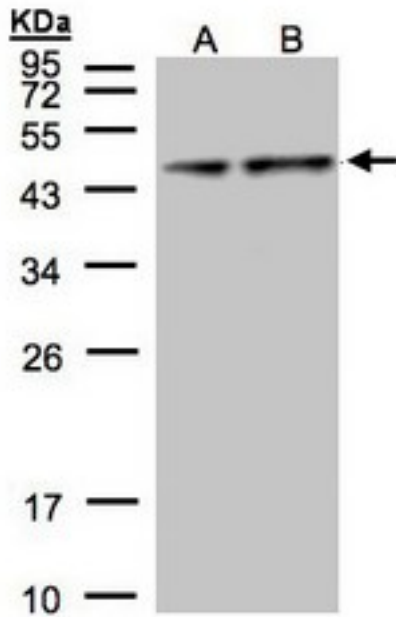
Human Heart: Formalin-Fixed, Paraffin-Embedded (FFPE)

**Immunocytochemistry Image:**



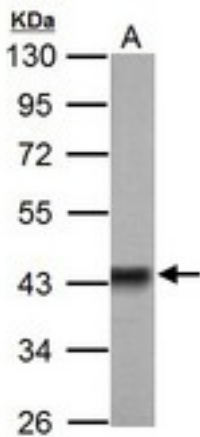
Immunofluorescence of paraformaldehyde-fixed HeLa using Pyruvate Dehydrogenase E1 alpha antibody at 1:200 dilution.

**Western Blot Image:**



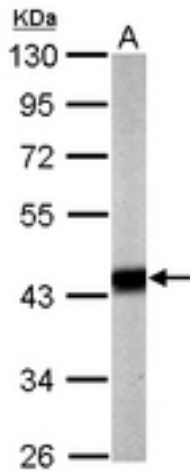
Sample (30 ug of whole cell lysate). A: Hep G2, B: MOLT4. 12% SDS PAGE. PDHA1 antibody diluted at 1:1000

**Western Blot Image:**



Sample (50 ug of whole cell lysate). A: Rat brain. 10% SDS PAGE. PDHA1 antibody diluted at 1:3000.

**Western Blot Image:**



Sample (20 ug of whole cell lysate). A: mouse brain. 10% SDS PAGE. PDHA1 antibody diluted at 1:5000.

**Requested From:**

Japan

Laboratory Reagent For In Vitro Research Use Only

Not for resale without prior written consent from LifeSpan BioSciences, Inc.

Created on 9/23/2014

© 2014 LifeSpan BioSciences