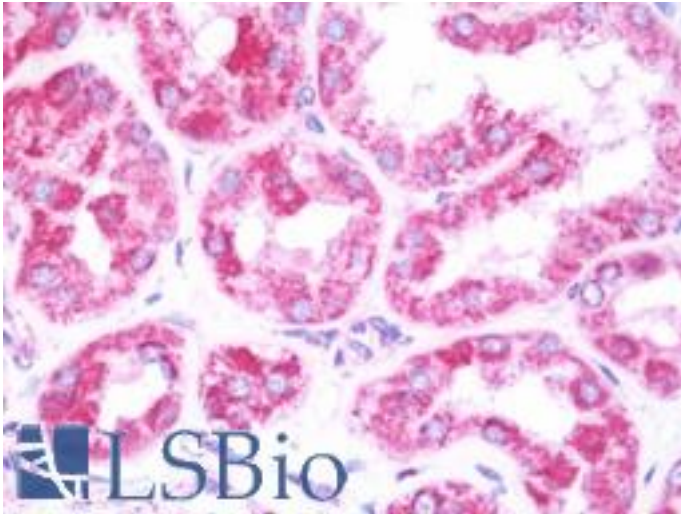


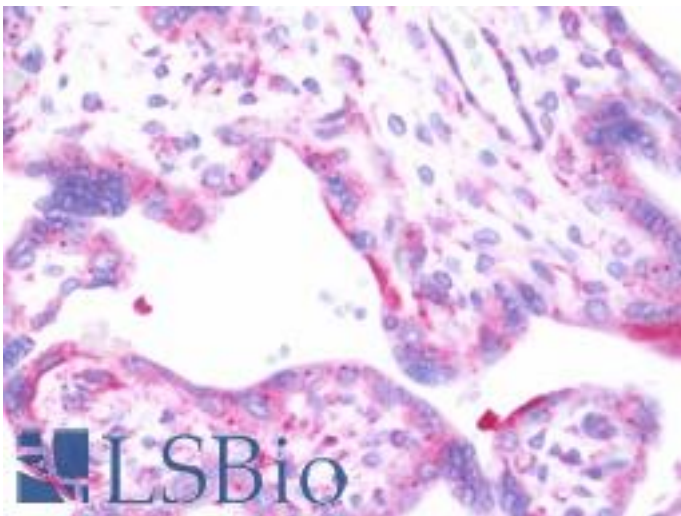
LAMB3 / Laminin Beta 3 Rabbit anti-Human Polyclonal (aa644-960) Antibody - LS-B10764 - LSBio	
CatalogID:	LS-B10764
Validation:	This antibody replaces catalog number LS-C185561. It has been validated for use in the following assays: IHC-P.
Target:	laminin, beta 3 (LAMB3)
Synonyms:	LAMB3 Antibody, BM600-125KDA Antibody, Kalinin subunit beta Antibody, Kalinin-140kDa Antibody, Laminin B1k chain Antibody, Laminin beta-3 chain Antibody, Laminin S B3 chain Antibody, Laminin-5 subunit beta Antibody, Nicein-125kDa Antibody, Nicein subunit beta Antibody, Kalinin B1 chain Antibody, LAM5 Antibody, Laminin, beta 3 Antibody, Epiligrin subunit bata Antibody, Laminin beta-3 Antibody, Laminin subunit beta-3 Antibody, LAMNB1 Antibody
Family / Subfamily:	Laminin / not assigned-Laminin
Host	LAMB3 antibody was produced in Rabbit
Clonality:	Polyclonal
Isotype:	IgG
Immunogen Species:	LAMB3 / Laminin Beta 3 antibody was raised against Human
Antigen Type:	Recombinant protein
Immunogen:	LAMB3 / Laminin Beta 3 antibody was raised against recombinant fragment corresponding to a region within amino acids 644 and 960 of Laminin beta 3 (SwissProt Q13751).
Specificity:	Human Laminin Beta-3 / LAMB3
Epitope:	aa644-960
Reactivity:	Human
Purification:	Immunoaffinity purified
Presentation:	0.1 M Tris-glycine, pH 7.0, 10% glycerol, 0.01% Thimerosal
Recommended Storage:	Keep as concentrated solution. Aliquot and store at -20°C or below. Avoid multiple freeze-thaw cycles.
Usage Summary:	IHC-paraffin: Suggested antigen retrieval using heat mediated 10 mM Citrate buffer (pH 6.0) or Tris-EDTA buffer (pH 8.0).
Uses:	IHC - Paraffin (7.5 µg/ml), ICC (1:100 - 1:1000), Western blot (1:500 - 1:3000) (Optimal dilution to be determined by the researcher)
Size:	100 µl
Concentration:	0.73 mg/ml

Immunohistochemistry Image:



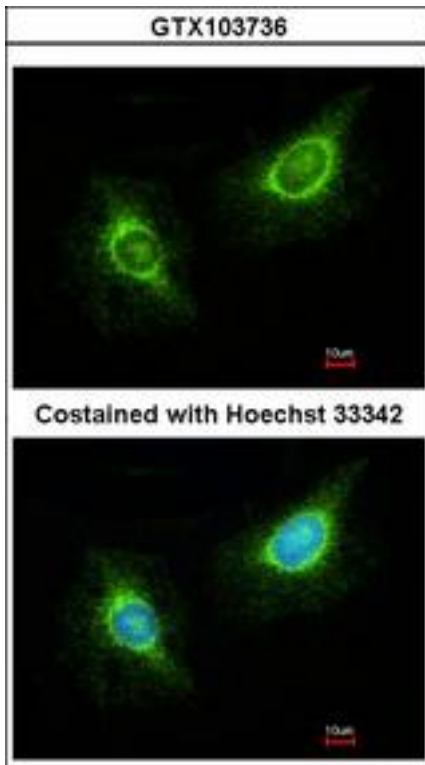
Human Kidney: Formalin-Fixed, Paraffin-Embedded (FFPE)

Immunohistochemistry Image:



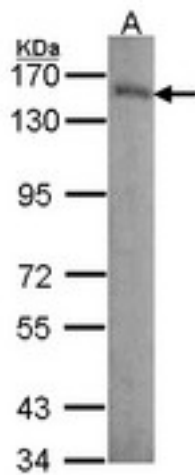
Human Placenta: Formalin-Fixed, Paraffin-Embedded (FFPE)

Immunocytochemistry Image:



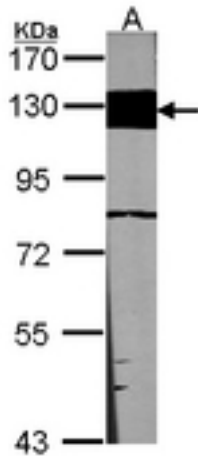
Immunofluorescence of methanol-fixed HeLa using Laminin beta 3 antibody at 1:200 dilution.

Western Blot Image:



Sample (30 ug of whole cell lysate). A: A431 . 7.5% SDS PAGE. Laminin beta-3 antibody. Laminin Beta-3 / LAMB3 antibody diluted at 1:1000.

Western Blot Image:



Sample (30 ug of whole cell lysate). A: NIH-3T3. 7.5% SDS PAGE. Laminin Beta-3 / LAMB3 antibody diluted at 1:1000.

Requested From:

Japan

Laboratory Reagent For In Vitro Research Use Only

Not for resale without prior written consent from LifeSpan BioSciences, Inc.

Created on 9/23/2014

© 2014 LifeSpan BioSciences