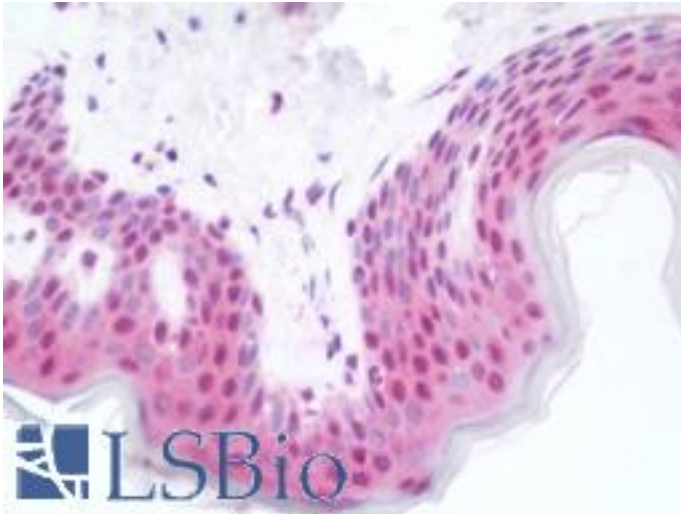


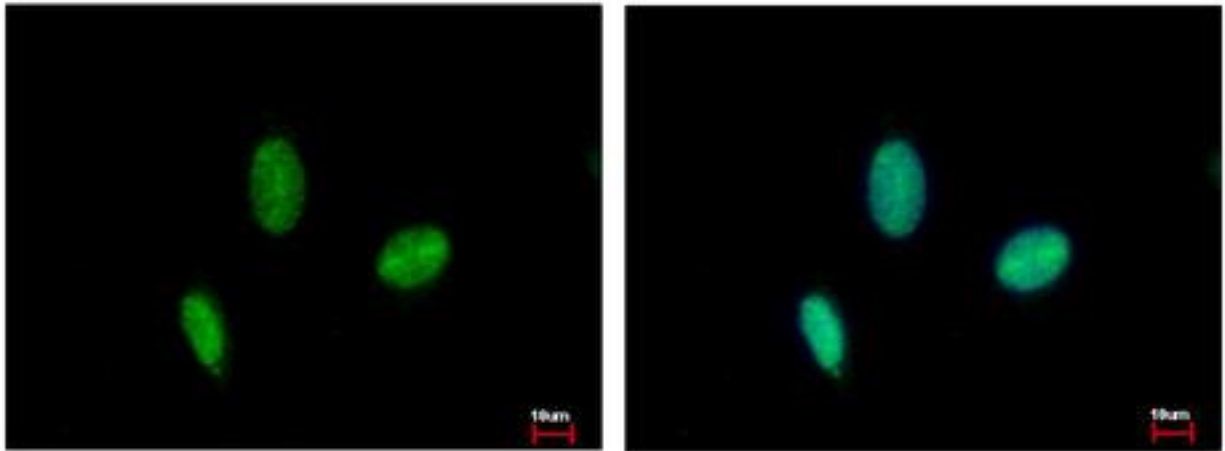
RAD23B / HR23B Rabbit anti-Human Polyclonal Antibody - LS-B10763 - LSBio	
<b>CatalogID:</b>	LS-B10763
<b>Validation:</b>	This antibody replaces catalog number LS-C155215. It has been validated for use in the following assays: IHC-P.
<b>Target:</b>	RAD23 homolog B ( <i>S. cerevisiae</i> ) (RAD23B)
<b>Synonyms:</b>	RAD23B Antibody, HR23B Antibody, p58 Antibody, RAD23, yeast homolog of, B Antibody, HHR23B Antibody
<b>Host</b>	RAD23B antibody was produced in Rabbit
<b>Clonality:</b>	Polyclonal
<b>Isotype:</b>	IgG
<b>Immunogen Species:</b>	RAD23B / HR23B antibody was raised against Human
<b>Antigen Type:</b>	Recombinant protein
<b>Immunogen:</b>	RAD23B / HR23B antibody was raised against recombinant fragment corresponding to a region within amino acids 1 and 338 of RAD23B (SwissProt P54727). Percent identity by BLAST analysis: Human (100%); Bovine (91%).
<b>Specificity:</b>	Human RAD23B
<b>Reactivity:</b>	Human
<b>Purification:</b>	Immunoaffinity purified
<b>Presentation:</b>	0.1 M Tris-glycine, pH 7, 20% Glycerol, 0.01% Thimerosal
<b>Recommended Storage:</b>	Aliquot and freeze at -20° C. Avoid freeze-thaw cycles.
<b>Usage Summary:</b>	Suggested starting dilutions are as follows: Western blot: 1:5000-1:20000, IHC-Paraffin: 10 µg/ml [suggested antigen retrieval using heat mediated 10 mM Citrate buffer (pH 6.0) or Tris-EDTA buffer (pH 8.0)], ICC/IF: 1:100-1:1000. Not yet tested in other applications. Optimal working dilutions should be determined experimentally by the end user.
<b>Uses:</b>	IHC - Paraffin (10 µg/ml), ICC (1:100 - 1:1000), Immunofluorescence (1:100 - 1:1000), Western blot (1:5000 - 1:20000) (Optimal dilution to be determined by the researcher)
<b>Size:</b>	100 µl
<b>Concentration:</b>	0.69 mg/ml

**Immunohistochemistry Image:**



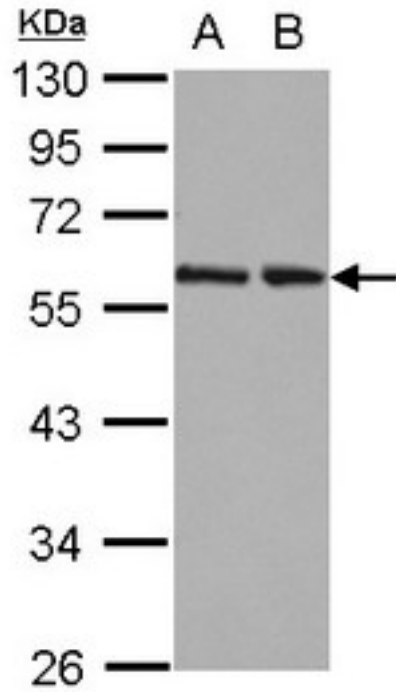
Human Skin: Formalin-Fixed, Paraffin-Embedded (FFPE)

**Immunofluorescence Image:**



RAD23B antibody detects RAD23B protein at nucleus by immunofluorescent analysis. HeLa cells were fixed in 4% paraformaldehyde at RT for 15 min. RAD23B protein stained by RAD23B antibody diluted at 1:500.

**Western Blot Image:**



Sample (30 ug of whole cell lysate) A: 293T B: A431 12% SDS PAGE RAD23B antibody diluted at 1:10000

**Requested From:**

Japan

Laboratory Reagent For In Vitro Research Use Only

Not for resale without prior written consent from LifeSpan BioSciences, Inc.

Created on 9/23/2014

© 2014 LifeSpan BioSciences