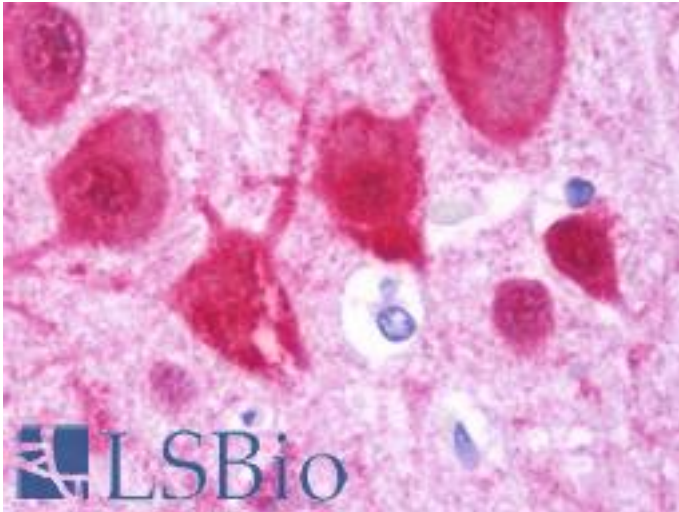


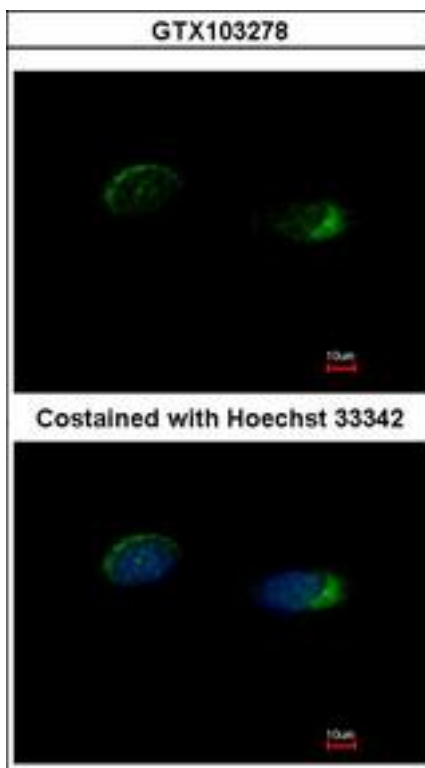
| HOMER1 / Homer 1 Rabbit anti-Human Polyclonal (aa72-339) Antibody - LS-B10761 - LSBio | |
|---|---|
| CatalogID: | LS-B10761 |
| Validation: | This antibody replaces catalog number LS-C185534. It has been validated for use in the following assays: IHC-P. |
| Target: | homer homolog 1 (Drosophila) (HOMER1) |
| Synonyms: | HOMER1 Antibody, HOMER Antibody, Homer homolog 1 (Drosophila) Antibody, Homer protein homolog 1 Antibody, HOMER1B Antibody, SYN47 Antibody, Ves-1 Antibody, Homer-1 Antibody, HOMER-1B Antibody, HOMER1A Antibody, HOMER1C Antibody |
| Host | HOMER1 antibody was produced in Rabbit |
| Clonality: | Polyclonal |
| Immunogen Species: | HOMER1 / Homer 1 antibody was raised against Human |
| Antigen Type: | Recombinant protein |
| Immunogen: | HOMER1 / Homer 1 antibody was raised against recombinant fragment corresponding to a region within amino acids 72 and 339 of Homer (SwissProt Q86YM7). |
| Specificity: | Human HOMER |
| Epitope: | aa72-339 |
| Reactivity: | Human |
| Purification: | Immunoaffinity purified |
| Presentation: | 0.1 M Tris-glycine, pH 7.0, 10% glycerol, 0.01% Thimerosal |
| Recommended Storage: | Keep as concentrated solution. Aliquot and store at -20°C or below. Avoid multiple freeze-thaw cycles. |
| Usage Summary: | IHC-paraffin: Suggested antigen retrieval using heat mediated 10 mM Citrate buffer (pH 6.0). |
| Uses: | IHC - Paraffin (7.5 µg/ml), ICC (1:100 - 1:1000), Western blot (1:500 - 1:3000) (Optimal dilution to be determined by the researcher) |
| Size: | 50 µl |
| Concentration: | 1 mg/ml |

Immunohistochemistry Image:



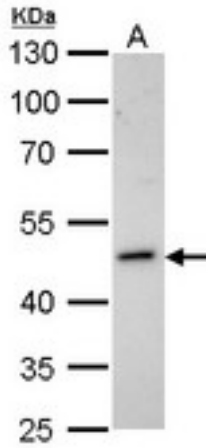
Human Brain, Cortex: Formalin-Fixed, Paraffin-Embedded (FFPE)

Immunocytochemistry Image:



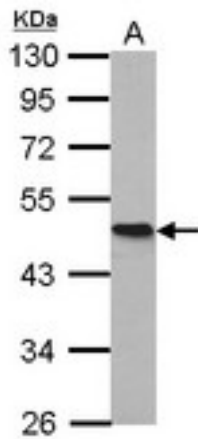
Immunofluorescence of methanol-fixed HeLa using Homer antibody at 1:500 dilution.

Western Blot Image:



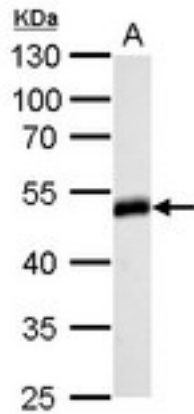
Homer antibody detects HOMER1 protein by Western blot analysis. A. 30 ug IMR32 whole cell lysate/extract. 10 % SDS-PAGE. Homer antibody dilution:1:1000

Western Blot Image:



Sample (20 ug of whole cell lysate). A: mouse brain. 10% SDS PAGE. HOMER antibody diluted at 1:20000.

Western Blot Image:



Homer antibody detects HOMER1 protein by Western blot analysis. A. 50 ug rat brain lysate/extract. 10 % SDS-PAGE. Homer antibody dilution:1:500

Requested From:

Japan

Laboratory Reagent For In Vitro Research Use Only

Not for resale without prior written consent from LifeSpan BioSciences, Inc.

Created on 9/23/2014

© 2014 LifeSpan BioSciences