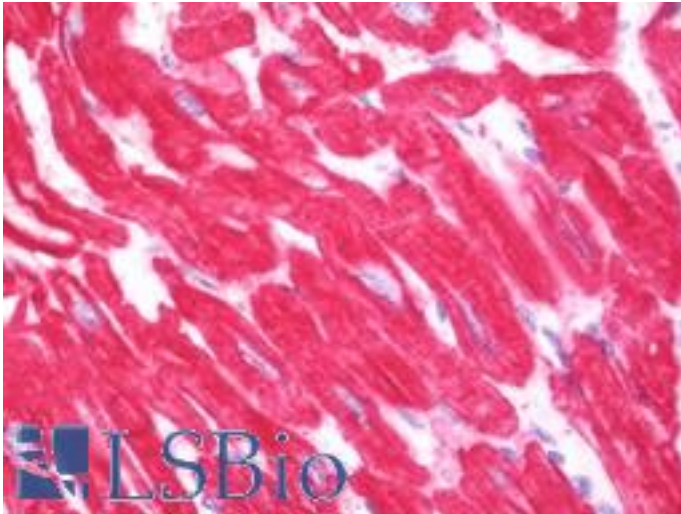


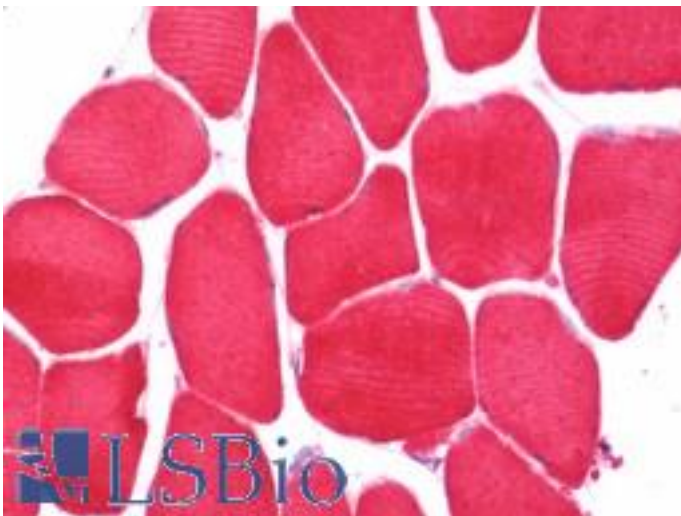
ACTC1 / Alpha Cardiac Actin Rabbit anti-Human Polyclonal (aa99-354) Antibody - LS-B10755 - LSBio	
<b>CatalogID:</b>	LS-B10755
<b>Validation:</b>	This antibody replaces catalog number LS-C185441. It has been validated for use in the following assays: IHC-P.
<b>Target:</b>	Actin, Alpha, Cardiac Muscle 1 (ACTC1)
<b>Synonyms:</b>	ACTC1 Antibody, Actin, alpha cardiac muscle 1 Antibody, Actin, alpha, cardiac muscle Antibody, Actin, alpha, cardiac muscle 1 Antibody, Alpha-cardiac actin Antibody, CMH11 Antibody, CMD1R Antibody, ACTC Antibody, LVNC4 Antibody, ASD5 Antibody
<b>Host</b>	ACTC1 antibody was produced in Rabbit
<b>Clonality:</b>	Polyclonal
<b>Immunogen Species:</b>	ACTC1 / Alpha Cardiac Actin antibody was raised against Human
<b>Antigen Type:</b>	Recombinant protein
<b>Immunogen:</b>	ACTC1 / Alpha Cardiac Actin antibody was raised against recombinant protein fragment contain a sequence corresponding to a region within amino acids 99 and 354 (P68032) of alpha Actin (cardiac muscle). Percent identity by BLAST analysis: Human, Chicken, Pig, Rat, Bovine (100%); Xenopus (99%).
<b>Specificity:</b>	Human ACTC1 / Alpha-Cardiac Actin
<b>Epitope:</b>	aa99-354
<b>Reactivity:</b>	Human, Rat, Bovine, Pig, Chicken
<b>Purification:</b>	Immunoaffinity purified
<b>Presentation:</b>	0.1 M Tris-glycine, pH 7.0, 10% glycerol, 0.01% Thimerosal
<b>Recommended Storage:</b>	Keep as concentrated solution. Aliquot and store at -20°C or below. Avoid multiple freeze-thaw cycles.
<b>Usage Summary:</b>	IHC-paraffin: Suggested antigen retrieval using heat mediated 10 mM Citrate buffer (pH 6.0) or Tris-EDTA buffer (pH 8.0).
<b>Uses:</b>	IHC - Paraffin (7.5 µg/ml), Western blot (1:500 - 1:3000) (Optimal dilution to be determined by the researcher)
<b>Size:</b>	100 µl
<b>Concentration:</b>	0.7 mg/ml

**Immunohistochemistry Image:**



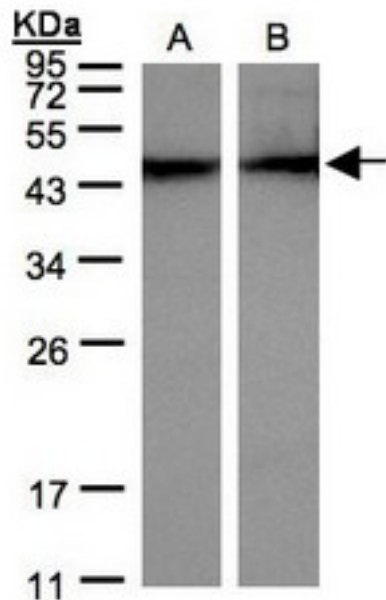
Human Heart: Formalin-Fixed, Paraffin-Embedded (FFPE)

**Immunohistochemistry Image:**



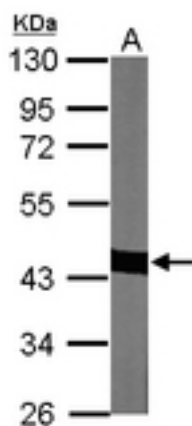
Human Skeletal Muscle: Formalin-Fixed, Paraffin-Embedded (FFPE)

**Western Blot Image:**



Sample (30 ug of whole cell lysate). A: HeLa S3, B: MOLT4. 12% SDS PAGE. ACTC1 / Alpha-Cardiac Actin antibody diluted at 1:500

**Western Blot Image:**



Sample (30 ug of whole cell lysate). A: NIH-3T3. 10% SDS PAGE. ACTC1 / Alpha-Cardiac Actin antibody diluted at 1:1000.

**Requested From:**

Japan

Laboratory Reagent For In Vitro Research Use Only

Not for resale without prior written consent from LifeSpan BioSciences, Inc.

Created on 9/23/2014

© 2014 LifeSpan BioSciences