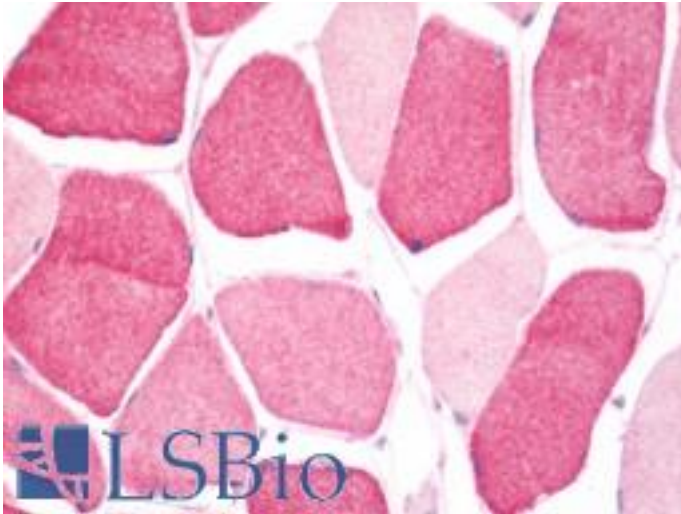


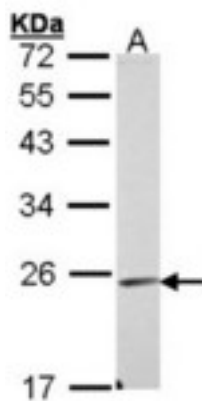
EMCN / Endomucin Rabbit anti-Human Polyclonal (aa4-206) Antibody - LS-B10754 - LSBio	
CatalogID:	LS-B10754
Validation:	This antibody replaces catalog number LS-C185440. It has been validated for use in the following assays: IHC-P.
Target:	endomucin (EMCN)
Synonyms:	EMCN Antibody, Endomucin-2 Antibody, EMCN2 Antibody, Endomucin Antibody, MUC-14 Antibody, Mucin-14 Antibody, MUC14 Antibody, Gastric cancer antigen Ga34 Antibody
Host	EMCN antibody was produced in Rabbit
Clonality:	Polyclonal
Isotype:	IgG
Immunogen Species:	EMCN / Endomucin antibody was raised against Human
Antigen Type:	Recombinant protein
Immunogen:	EMCN / Endomucin antibody was raised against recombinant fragment corresponding to a region within amino acids 4 and 206 of Endomucin (SwissProt Q9ULC0).
Specificity:	Human EMCN / Endomucin
Epitope:	aa4-206
Reactivity:	Human
Purification:	Immunoaffinity purified
Presentation:	PBS, pH 7.0, 40% glycerol, 0.01% Thimerosal
Recommended Storage:	Keep as concentrated solution. Aliquot and store at -20°C or below. Avoid multiple freeze-thaw cycles.
Uses:	IHC - Paraffin (10 µg/ml), Western blot (1:500 - 1:3000) (Optimal dilution to be determined by the researcher)
Size:	50 µl
Concentration:	1 mg/ml

Immunohistochemistry Image:



Human Skeletal Muscle: Formalin-Fixed, Paraffin-Embedded (FFPE)

Western Blot Image:



Sample (30 ug of whole cell lysate). A: A431 . 12% SDS PAGE. EMCN / Endomucin antibody diluted at 1:1000.

Requested From:

Japan

Laboratory Reagent For In Vitro Research Use Only

Not for resale without prior written consent from LifeSpan BioSciences, Inc.

Created on 9/23/2014

© 2014 LifeSpan BioSciences