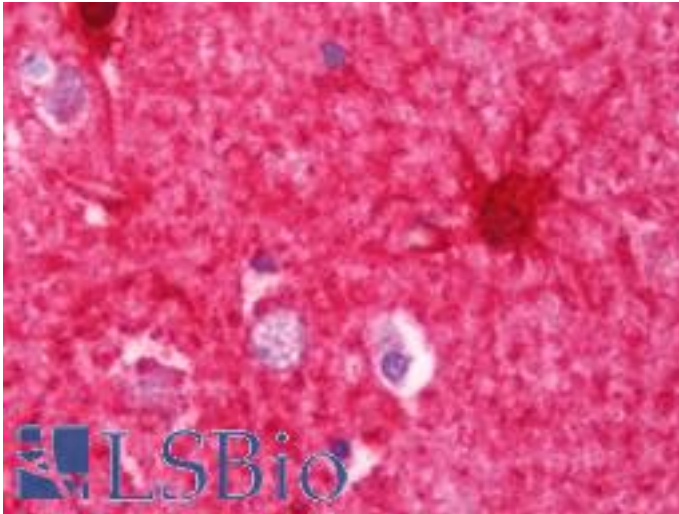


CKB / Creatine Kinase BB Rabbit anti-Human Polyclonal (aa165-381) Antibody - LS-B10753 - LSBio

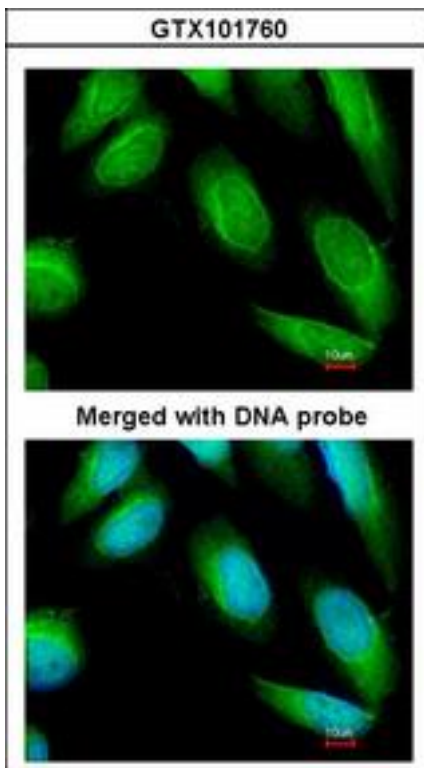
<b>CatalogID:</b>	LS-B10753
<b>Validation:</b>	This antibody replaces catalog number LS-C185429. It has been validated for use in the following assays: IHC-P.
<b>Target:</b>	creatine kinase, brain (CKB)
<b>Synonyms:</b>	CKB Antibody, CKBB Antibody, Creatine kinase-B Antibody, Creatine kinase, b chain Antibody, B-CK Antibody, Creatine kinase B chain Antibody, Creatine kinase B-type Antibody, Creatine kinase, brain Antibody
<b>Host</b>	CKB antibody was produced in Rabbit
<b>Clonality:</b>	Polyclonal
<b>Immunogen Species:</b>	CKB / Creatine Kinase BB antibody was raised against Human
<b>Antigen Type:</b>	Recombinant protein
<b>Immunogen:</b>	CKB / Creatine Kinase BB antibody was raised against recombinant fragment corresponding to a region within amino acids 165 and 381 of Creatine kinase (brain) (SwissProt P12277). Percent identity by BLAST analysis: Human (100%); Chicken, Rat (97%); Pig, Rabbit, Bovine (96%); Xenopus (88%).
<b>Specificity:</b>	Human CKB / CKBB
<b>Epitope:</b>	aa165-381
<b>Reactivity:</b>	Human, Mouse
<b>Purification:</b>	Immunoaffinity purified
<b>Presentation:</b>	0.1 M Tris-glycine, pH 7.0, 10% glycerol, 0.01% Thimerosal
<b>Recommended Storage:</b>	Keep as concentrated solution. Aliquot and store at -20°C or below. Avoid multiple freeze-thaw cycles.
<b>Usage Summary:</b>	IHC-paraffin: Suggested antigen retrieval using heat mediated 10 mM Citrate buffer (pH 6.0) or Tris-EDTA buffer (pH 8.0).
<b>Uses:</b>	IHC - Paraffin (7.5 µg/ml), ICC (1:100 - 1:1000), Western blot (1:1000 - 1:10000) (Optimal dilution to be determined by the researcher)
<b>Size:</b>	100 µl
<b>Concentration:</b>	0.54 mg/ml

**Immunohistochemistry Image:**



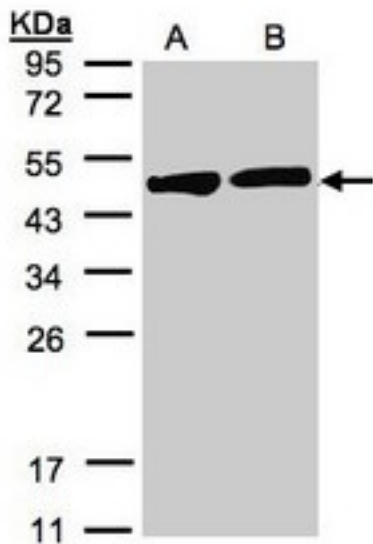
Human Brain, Cortex: Formalin-Fixed, Paraffin-Embedded (FFPE)

**Immunocytochemistry Image:**



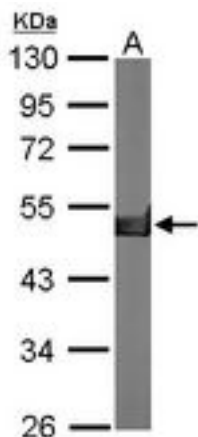
Immunofluorescence of paraformaldehyde-fixed HeLa using Creatine Kinase BB antibody at 1:100 dilution.

**Western Blot Image:**



Sample (30 ug of whole cell lysate). A: H1299, B: HeLa S3. 12% SDS PAGE. CKB / CKBB antibody diluted at 1:1000

**Western Blot Image:**



Sample (50 ug of whole cell lysate). A: Mouse brain. 10% SDS PAGE. CKB / CKBB antibody diluted at 1:10000.

Requested From:

Japan

Laboratory Reagent For In Vitro Research Use Only

Not for resale without prior written consent from LifeSpan BioSciences, Inc.

Created on 9/23/2014

© 2014 LifeSpan BioSciences