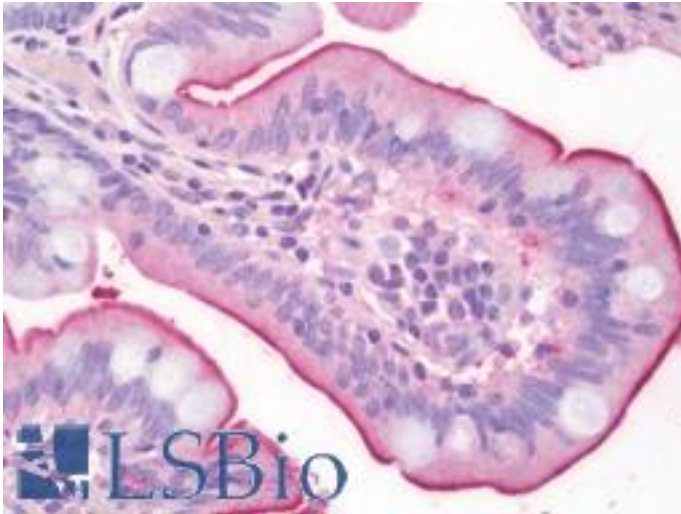


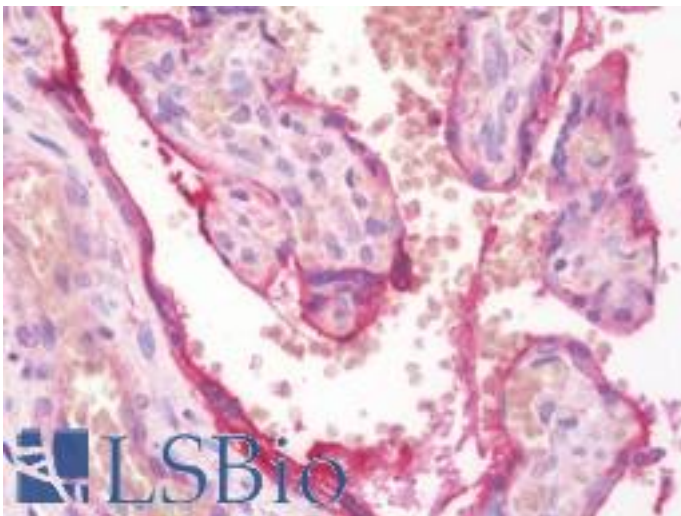
ALPI / Alkaline Phosphatase Mouse anti-Human Monoclonal (aa397-458) (3B10E7) Antibody - LS-B10745 - LSBio	
CatalogID:	LS-B10745
Validation:	This antibody replaces catalog number LS-C191828. It has been validated for use in the following assays: IHC-P.
Target:	alkaline phosphatase, intestinal (ALPI)
Synonyms:	ALPI Antibody, Alkaline phosphomonoesterase Antibody, Kasahara isozyme Antibody, Glycerophosphatase Antibody, Alkaline Phosphatase Antibody, IAP Antibody
Host	ALPI antibody was produced in Mouse
Clonality:	Monoclonal
Isotype:	IgG1
Clone Name:	3B10E7
Immunogen Species:	ALPI / Alkaline Phosphatase antibody was raised against Human
Antigen Type:	Recombinant protein
Immunogen:	ALPI / Alkaline Phosphatase antibody was raised against purified recombinant fragment of human ALPI (AA: 397-458)
Specificity:	Human ALPI / Alkaline Phosphatase
Epitope:	aa397-458
Reactivity:	Human
Purification:	Purified
Presentation:	PBS, 0.05% sodium azide, 0.5% protein stabilizer
Recommended Storage:	Short term +4°C; Long term -20°C
Uses:	IHC - Paraffin (10 µg/ml), Western blot (1:500 - 1:2000), Flow Cytometry (1:200 - 1:400), ELISA (1:10000) (Optimal dilution to be determined by the researcher)
Size:	50 µg
Concentration:	1 mg/ml

Immunohistochemistry Image:



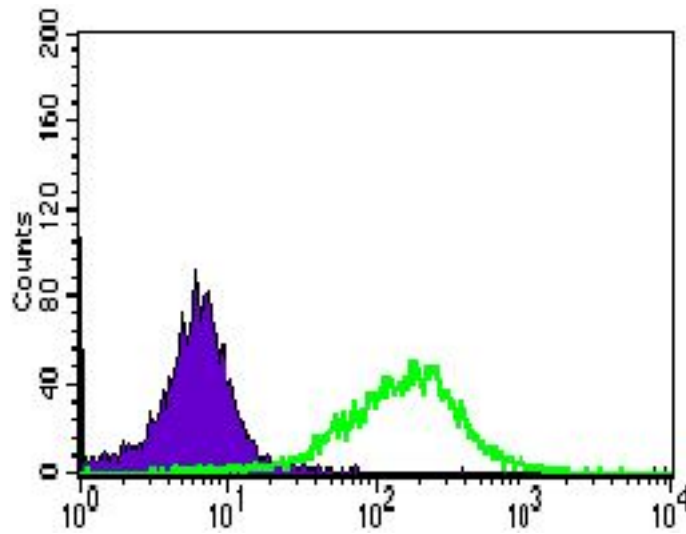
Human Small Intestine: Formalin-Fixed, Paraffin-Embedded (FFPE)

Immunohistochemistry Image:



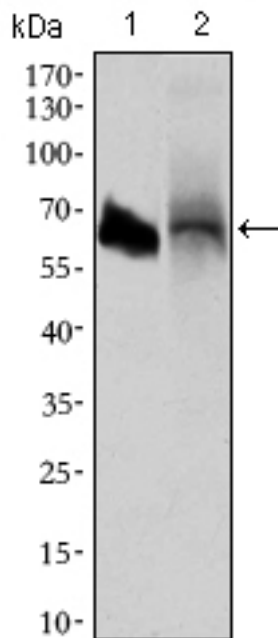
Human Placenta: Formalin-Fixed, Paraffin-Embedded (FFPE)

Flow Cytometry Image:



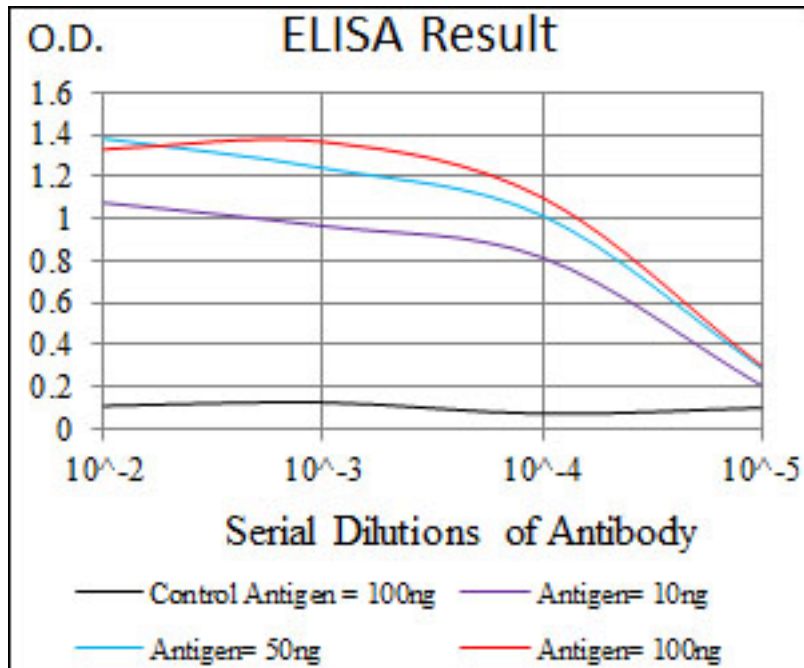
Flow cytometry of HepG2 cells using ALPI mouse mAb (green) and negative control (purple).

Western Blot Image:



Western blot of ALPI mouse mAb against HL60 (1) and HepG2 (2) cell lysate.

ELISA Image:



Red: Control Antigen (100ng); Purple: Antigen (10ng); Green: Antigen (50ng); Blue: Antigen (100ng);

Requested From:

Japan

Laboratory Reagent For In Vitro Research Use Only

Not for resale without prior written consent from LifeSpan BioSciences, Inc.

Created on 9/23/2014

© 2014 LifeSpan BioSciences