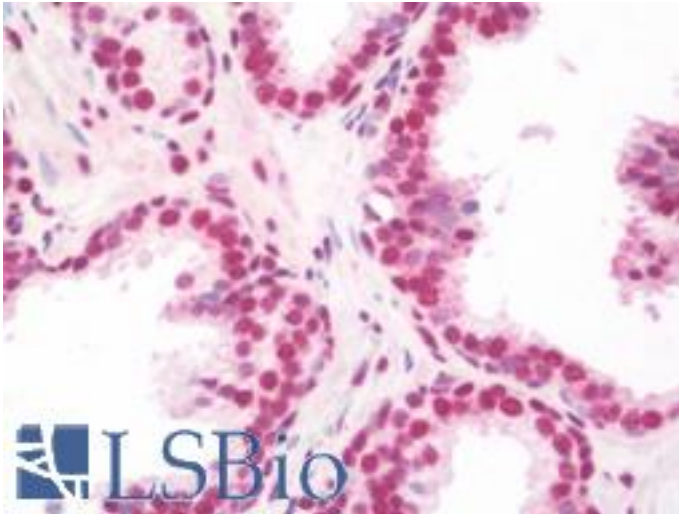


NELFA / WHSC2 Mouse anti-Human Monoclonal (aa280-511) (6B11H8) Antibody - LS-B10744 - LSBio

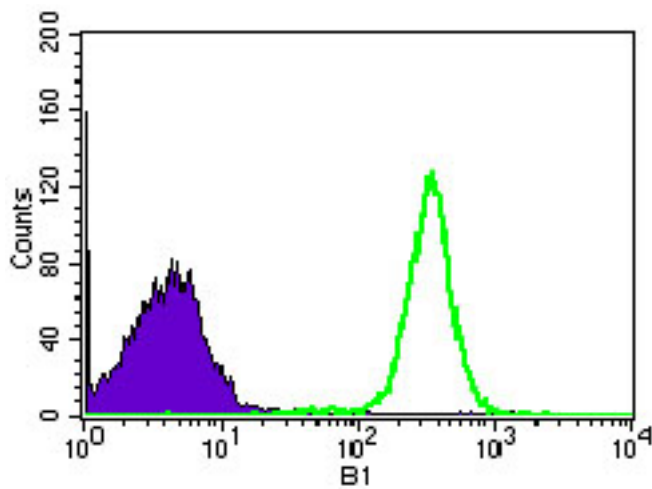
CatalogID:	LS-B10744
Validation:	This antibody replaces catalog number LS-C191815. It has been validated for use in the following assays: IHC-P.
Target:	negative elongation factor complex member A (NELFA)
Synonyms:	NELFA Antibody, Negative elongation factor A Antibody, NELF-A Antibody, P/OKcl.15 Antibody, WHSC2 Antibody
Host	NELFA antibody was produced in Mouse
Clonality:	Monoclonal
Isotype:	IgG2b
Clone Name:	6B11H8
Immunogen Species:	NELFA / WHSC2 antibody was raised against Human
Antigen Type:	Recombinant protein
Immunogen:	NELFA / WHSC2 antibody was raised against purified recombinant fragment of human WHSC2 (AA: 280-511)
Specificity:	Human WHSC2
Epitope:	aa280-511
Reactivity:	Human, Rat
Purification:	Purified
Presentation:	PBS, 0.05% sodium azide, 0.5% protein stabilizer
Recommended Storage:	Short term +4°C; Long term -20°C
Uses:	IHC - Paraffin (10 µg/ml), ICC (1:200 - 1:1000), Western blot (1:500 - 1:2000), Flow Cytometry (1:200 - 1:400), ELISA (1:10000) (Optimal dilution to be determined by the researcher)
Size:	50 µg
Concentration:	1 mg/ml

Immunohistochemistry Image:



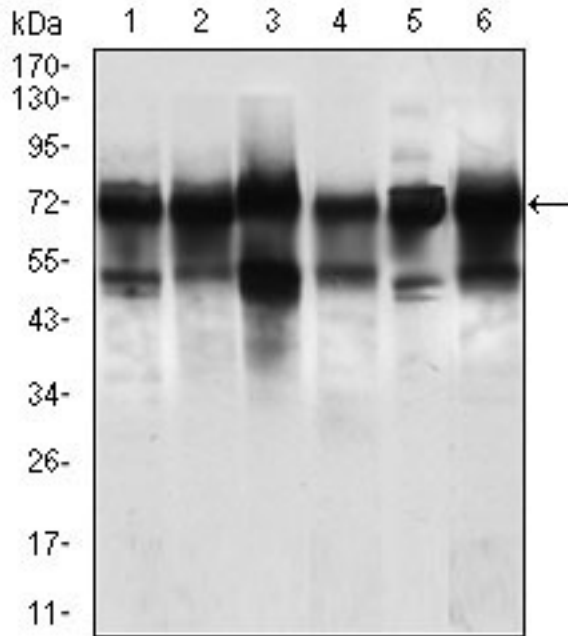
Human Prostate: Formalin-Fixed, Paraffin-Embedded (FFPE)

Flow Cytometry Image:



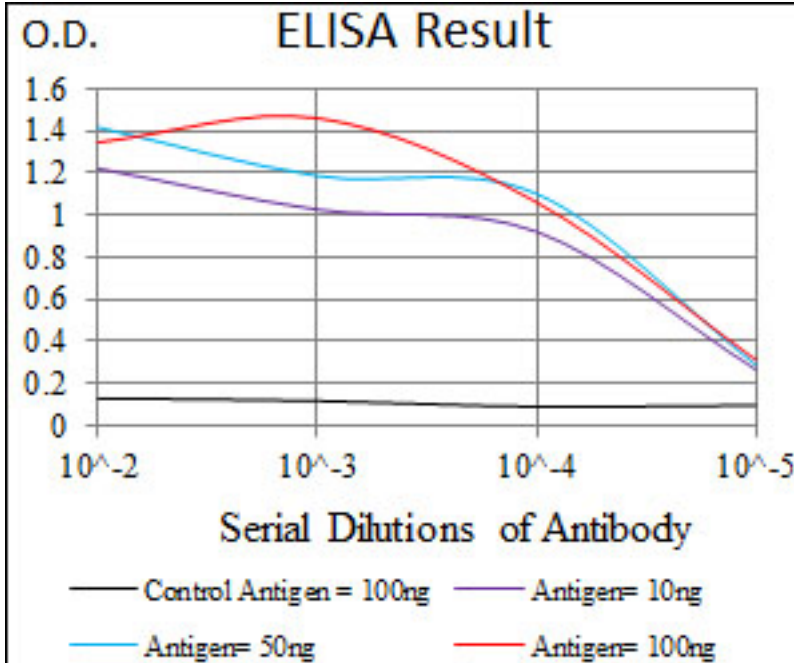
Flow cytometry of HEK293 cells using WHSC2 mouse mAb (green) and negative control (purple).

Western Blot Image:



Western blot of WHSC2 mouse mAb against Jurkat (1), HeLa (2), HEK293 (3), A549 (5), SPC-A-1 (6) cell lysate, and Rat brain (4) tissue lysate.

ELISA Image:



Red: Control Antigen (100ng); Purple: Antigen (10ng); Green: Antigen (50ng); Blue: Antigen (100ng);

Requested From:

Japan

Laboratory Reagent For In Vitro Research Use Only

Not for resale without prior written consent from LifeSpan BioSciences, Inc.

Created on 9/23/2014

© 2014 LifeSpan BioSciences