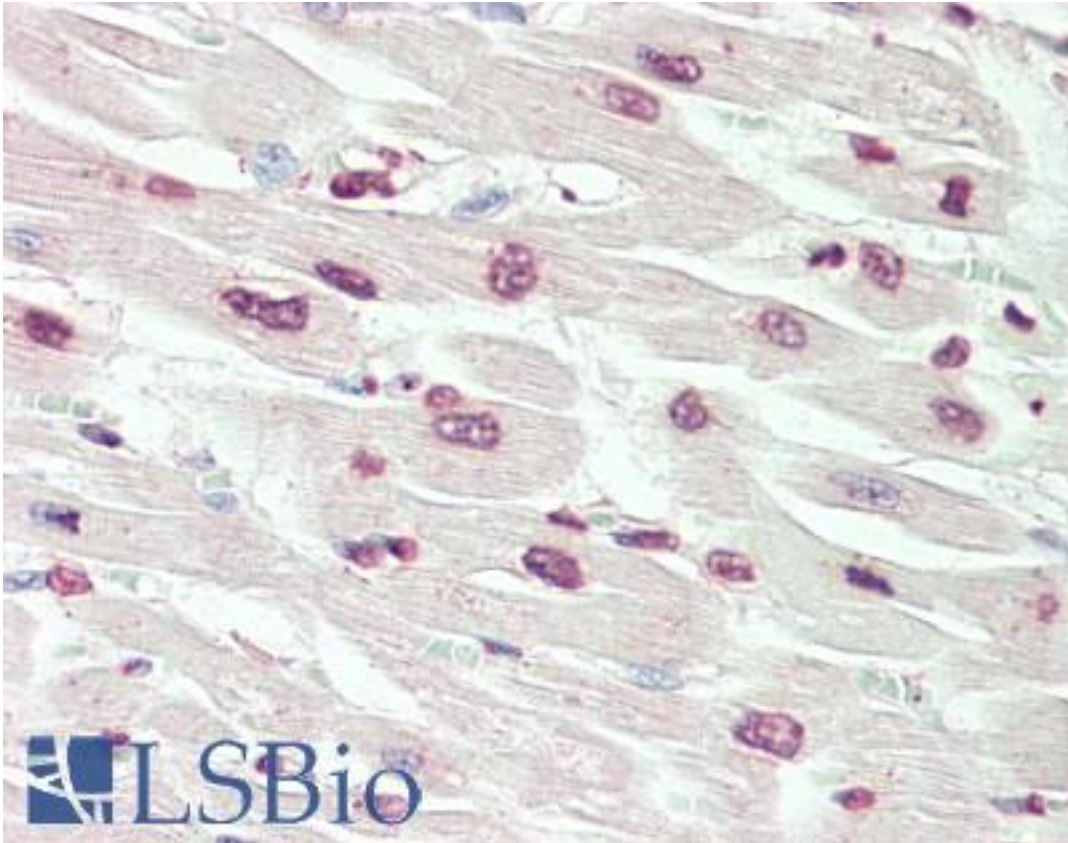


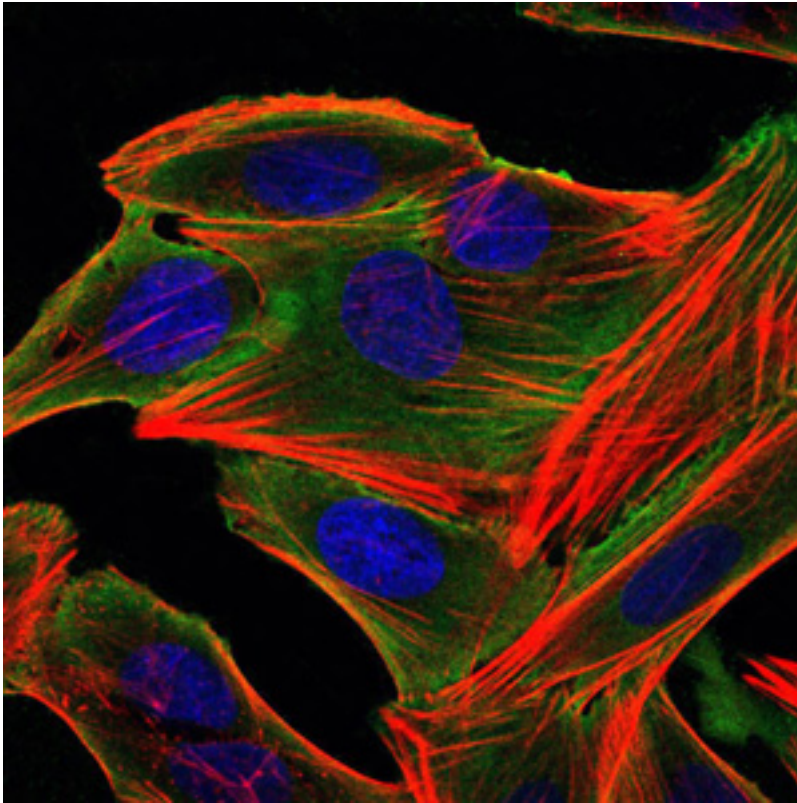
RPS6KA3 / RSK2 Mouse anti-Human Monoclonal (4E10) Antibody - LS-B10741 - LSBio	
CatalogID:	LS-B10741
Validation:	This antibody replaces catalog number LS-C169435. It has been validated for use in the following assays: IHC-P.
Target:	ribosomal protein S6 kinase, 90kDa, polypeptide 3 (RPS6KA3)
Synonyms:	RPS6KA3 Antibody, Coffin-Lowry syndrome Antibody, HU-2 Antibody, ISPK1 Antibody, MAPKAP kinase 1B Antibody, MAPKAPK-1b Antibody, MRX19 Antibody, Ribosomal S6 kinase 2 Antibody, RSK-2 Antibody, p90-RSK 3 Antibody, p90RSK3 Antibody, RSK Antibody, RSK2 Antibody, S6K-alpha-3 Antibody, S6K-alpha3 Antibody, CLS Antibody, ISPK-1 Antibody, MAPKAPK1B Antibody, p90-RSK2 Antibody, Pp90RSK2 Antibody
Family / Subfamily:	Protein Kinase / RSK
Host	RPS6KA3 antibody was produced in Mouse
Clonality:	Monoclonal
Isotype:	IgG1
Clone Name:	4E10
Immunogen Species:	RPS6KA3 / RSK2 antibody was raised against Human
Antigen Type:	Recombinant protein
Immunogen:	RPS6KA3 / RSK2 antibody was raised against purified recombinant fragment of human RSK2 expressed in E. coli.
Specificity:	Human RPS6KA3 / RSK2
Reactivity:	Human
Purification:	Ascites
Presentation:	Ascites, 0.03% sodium azide
Recommended Storage:	Long term: -20°C; Short term: +4°C; Avoid freeze-thaw cycles.
Uses:	IHC - Paraffin (1:50), ICC (1:200 - 1:1000), Immunofluorescence (1:1000), Western blot (1:500 - 1:2000), Flow Cytometry (1:200 - 1:400), ELISA (1:10000) (Optimal dilution to be determined by the researcher)
Size:	50 µl

Immunohistochemistry Image:



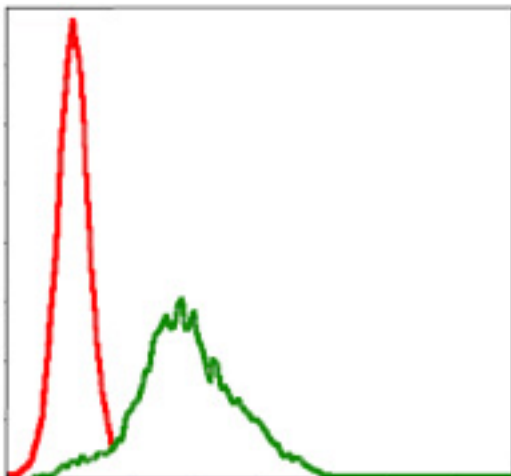
Human Heart: Formalin-Fixed, Paraffin-Embedded (FFPE)

Immunofluorescence Image:



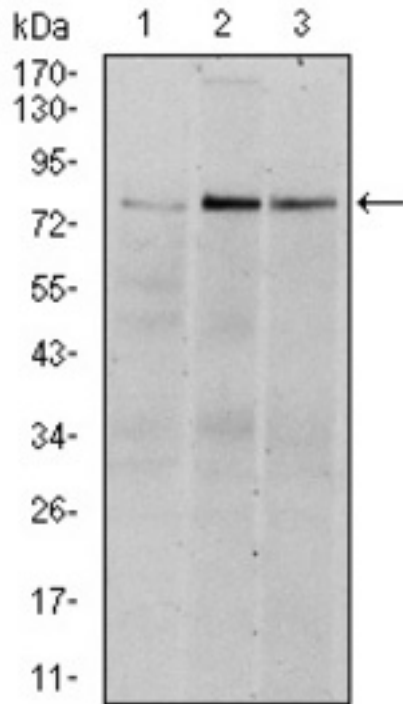
Immunofluorescence of HepG2 cells using RSK2 mouse mAb (green). Blue: DRAQ5 fluorescent DNA dye. Red: Actin filaments have been labeled with Alexa Fluor-555 phalloidin.

Flow Cytometry Image:



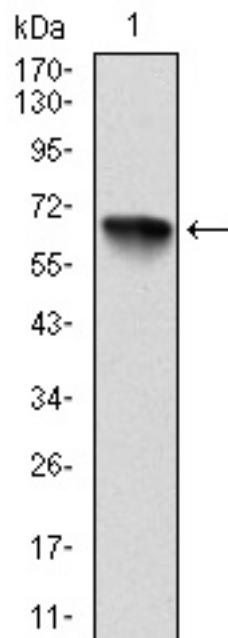
Flow cytometry of HepG2 cells using RSK2 mouse mAb (green) and negative control (red).

Western Blot Image:



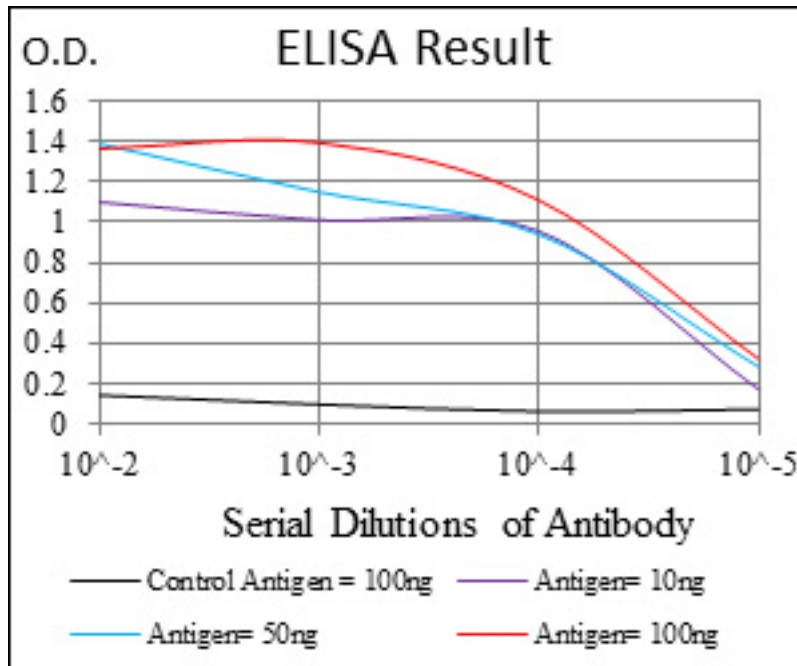
Western blot of RSK2 mouse mAb against HeLa (1), MCF-7 (2), and HepG2 (3) cell lysate.

Western Blot Image:



Western blot of RSK2 mAb against human RSK2 (AA: 1-212) recombinant protein. (Expected MW is 49.7 kDa)

ELISA Image:



Red: Control Antigen (100ng); Purple: Antigen (10ng); Green: Antigen (50ng); Blue: Antigen (100ng);

Requested From:

Japan

Laboratory Reagent For In Vitro Research Use Only

Not for resale without prior written consent from LifeSpan BioSciences, Inc.

Created on 9/23/2014

© 2014 LifeSpan BioSciences