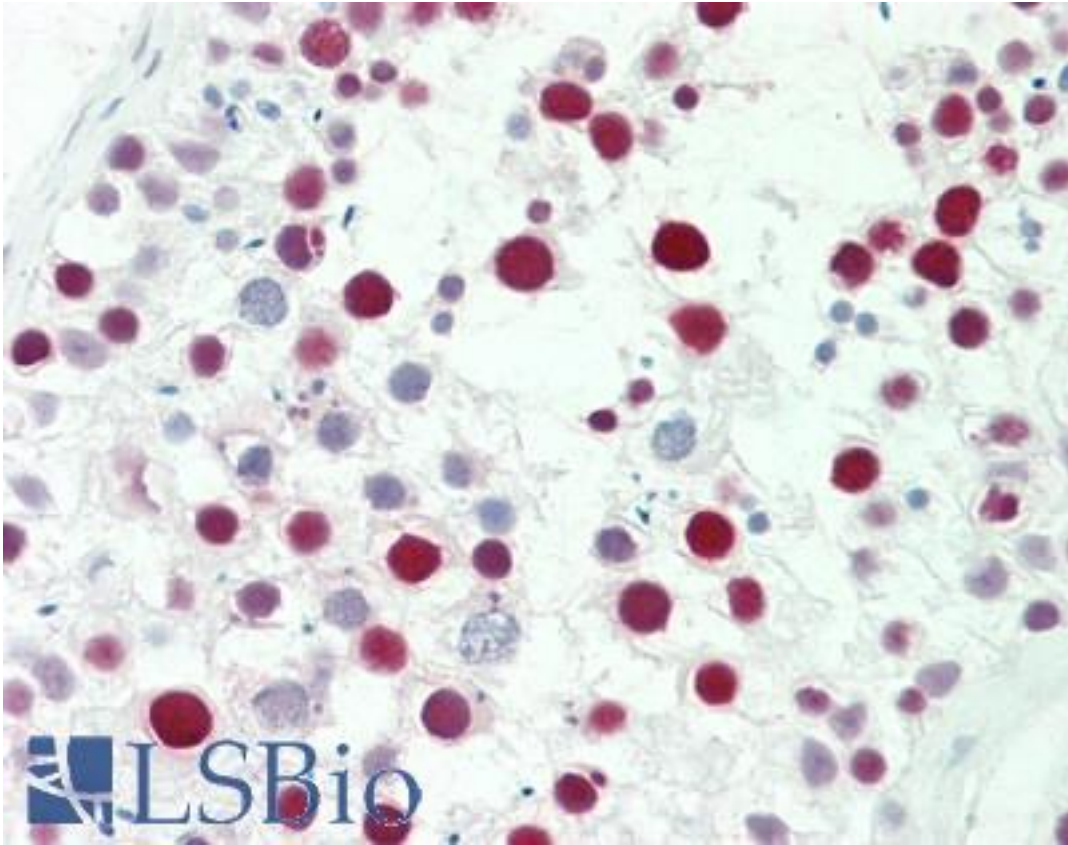


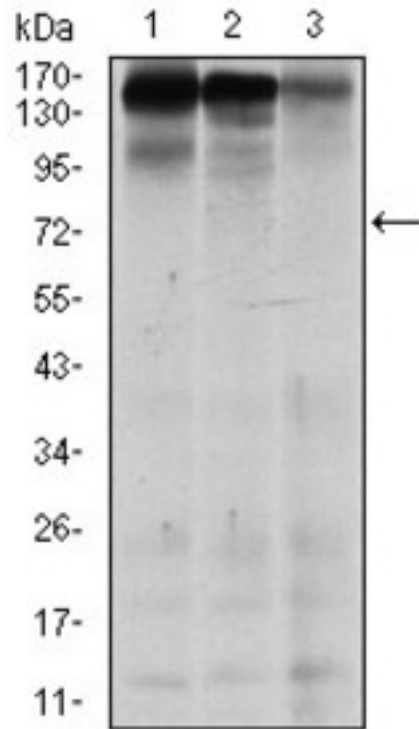
MSH6 Mouse anti-Human Monoclonal (5B11) Antibody - LS-B10739 - LSBio	
CatalogID:	LS-B10739
Validation:	This antibody replaces catalog number LS-C169432. It has been validated for use in the following assays: IHC-P.
Target:	mutS homolog 6 (MSH6)
Synonyms:	MSH6 Antibody, GTBP Antibody, HSAP Antibody, GTMBP Antibody, MutS (E. coli) homolog 6 Antibody, HMSH6 Antibody, Sperm-associated protein Antibody, p160 Antibody, G/T mismatch-binding protein Antibody, HNPCC5 Antibody, MutS homolog 6 (E. coli) Antibody, MutS-alpha 160 kDa subunit Antibody
Host	MSH6 antibody was produced in Mouse
Clonality:	Monoclonal
Isotype:	IgG1
Clone Name:	5B11
Immunogen Species:	MSH6 antibody was raised against Human
Antigen Type:	Recombinant protein
Immunogen:	MSH6 antibody was raised against purified recombinant fragment of human MSH6 expressed in E. coli.
Specificity:	Human MSH6
Reactivity:	Human
Purification:	Ascites
Presentation:	Ascites, 0.03% sodium azide
Recommended Storage:	Long term: -20°C; Short term: +4°C; Avoid freeze-thaw cycles.
Uses:	IHC - Paraffin (1:50), Western blot (1:500 - 1:2000), ELISA (1:10000) (Optimal dilution to be determined by the researcher)
Size:	50 µl

Immunohistochemistry Image:



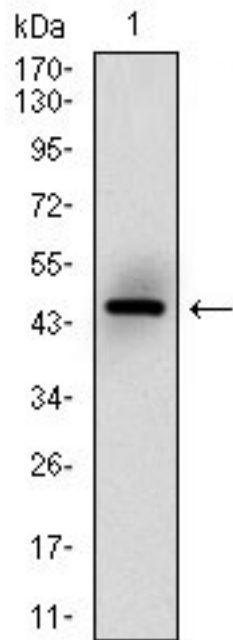
Human Testis: Formalin-Fixed, Paraffin-Embedded (FFPE)

Western Blot Image:



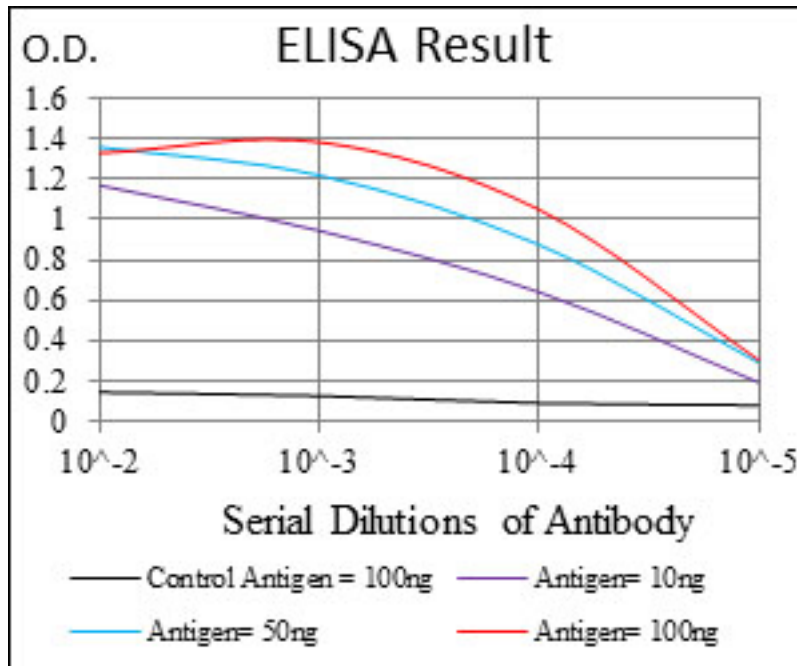
Western blot of MSH6 mouse mAb against MCF-7 (1), HEK293 (2), and HCT116 (3) cell lysate.

Western Blot Image:



Western blot of MSH6 mAb against human MSH6 (AA: 217-395) recombinant protein. (Expected MW is 45.5 kDa)

ELISA Image:



Red: Control Antigen (100ng); Purple: Antigen (10ng); Green: Antigen (50ng); Blue: Antigen (100ng);

Requested From:

Japan

Laboratory Reagent For In Vitro Research Use Only

Not for resale without prior written consent from LifeSpan BioSciences, Inc.

Created on 9/23/2014

© 2014 LifeSpan BioSciences